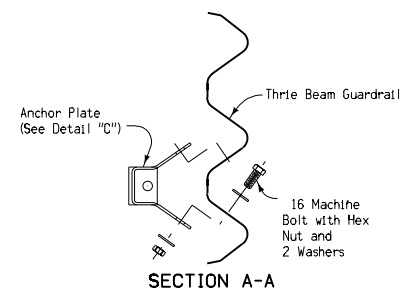
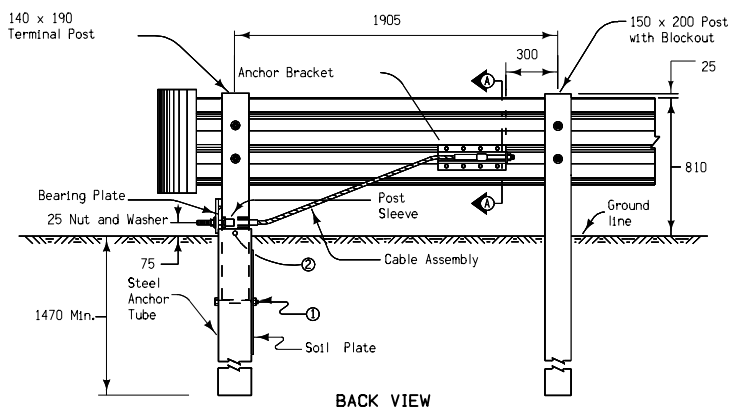
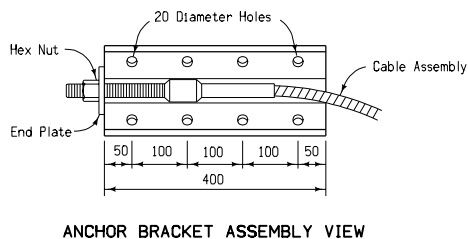
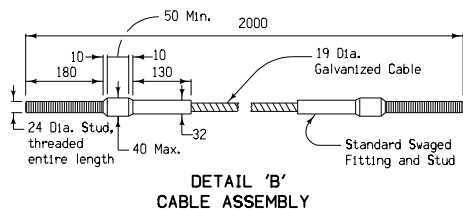
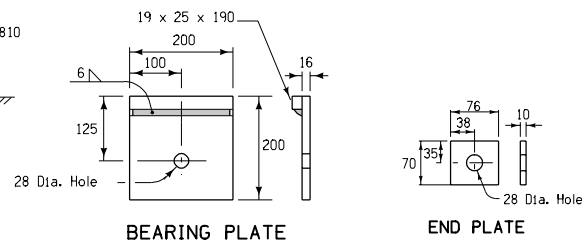


GENERAL NOTES:

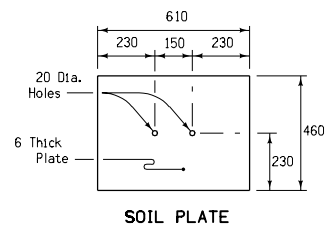
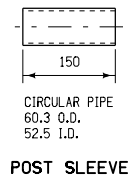
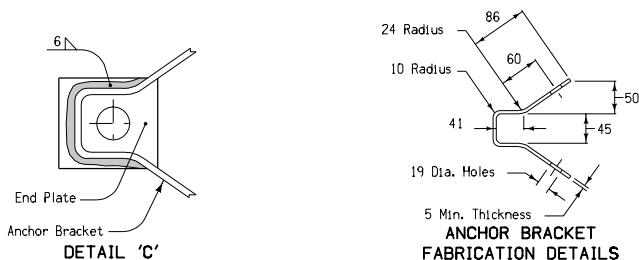
All hardware shall conform to the specifications set forth in "A Guide to Standardized Barrier Hardware", published by AASHTO.

The price bid for "Guardrail, End Anchorage, Beam, RE-33B", shall be considered full compensation for furnishing the materials detailed on this sheet and the construction of the end anchorage. Thrie-beam guardrail and 150 mm x 200 mm post with blockouts are not included with this bid item.

- ① Two 190 long, 19 hex bolt, nut and washers under head and nut.
- ② One 254 long, 19 hex bolt, nut and washers under head and nut.



All dimensions given in millimeters unless noted.



METRIC VERSION	Iowa Department of Transportation Highway Division	
	STANDARD ROAD PLAN RE-33B	
	REVISION: Replace concrete anchor with steel anchor tube and plate.	REVISION NO. 4
	APPROVED BY: <i>William J. Stan</i> DESIGN METHODS ENGINEER	REVISION DATE 10-29-02
BEAM GUARDRAIL END ANCHORAGE (THRIE BEAM)		