

Price bid for "Bridge End drain, RF-38" shall be considered full compensation for furnishing, installing, and constructing the Bridge End Drain as shown.

Contract Items:

- Paved Shoulder, P.C. Concrete
- Bridge End Drain, RF-38
- Corrugated Metal Storm Sewer Pipe, 300 mm
- Apron, Metal, 300 mm

Incidental to Paved Shoulder:

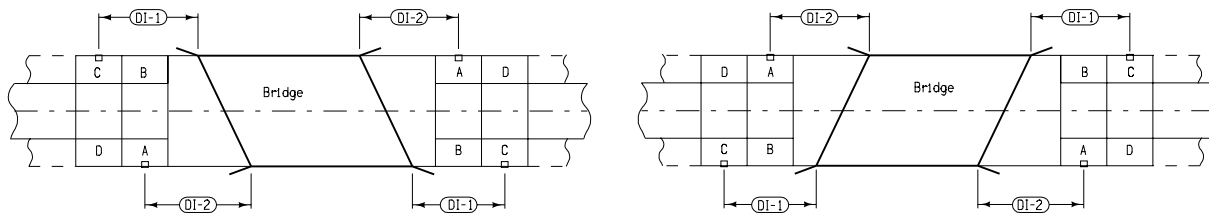
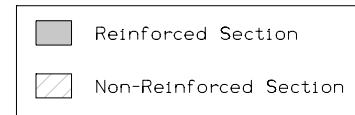
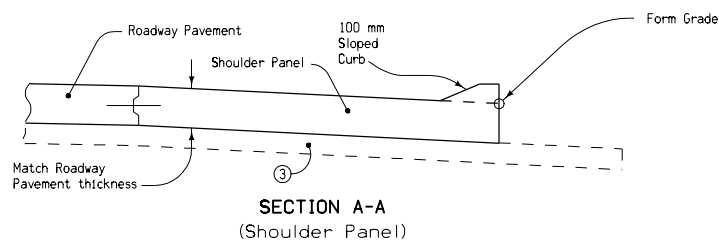
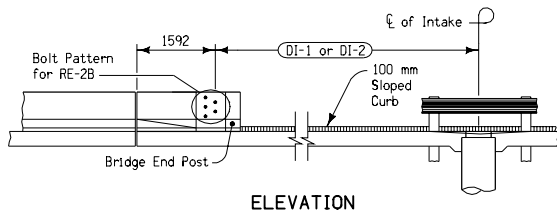
- Modified Subbase
- Polymer Grid

Incidental to Bridge End Drain:

- Cast iron grates, frames, and settlement collars
- Excavation, backfill, and special shaping for intake
- Excavation and backfilling of trench for outlet pipe

Tabulation: 104-8

- ① Build 100 millimeter Sloped Curb 1.5 meters beyond centerline of Intake.
- ② Paved shoulder panel will be paid for as "Paved Shoulder, P. C. Concrete".
- ③ Modified subbase and polymer grid shall be installed under shoulder panels. See Section A-A (Standard Road Plan RK-20(3), RK-25(3), or RK-26(3)) or Section C-C (Standard Road Plan RK-23).
- ④ Intake shall be located 1.5 meters or more from the nearest transverse pavement joint. Joints are determined by the bridge approach section.



For Section B-B, see Standard Road Plan RF-38(2).

All dimensions given in millimeters unless noted.

M METRIC VERSION	Iowa Department of Transportation Highway Division	
	STANDARD ROAD PLAN RF-38(1)	
	REVISION: Correct Corrugated Pipe Contract Item.	REVISION NO. 6
	 APPROVED BY DESIGN METHODS ENGINEER	REVISION DATE 04-19-05
INTAKE FOR BRIDGE END DRAIN (Sheet 1 of 2)		