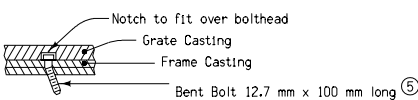
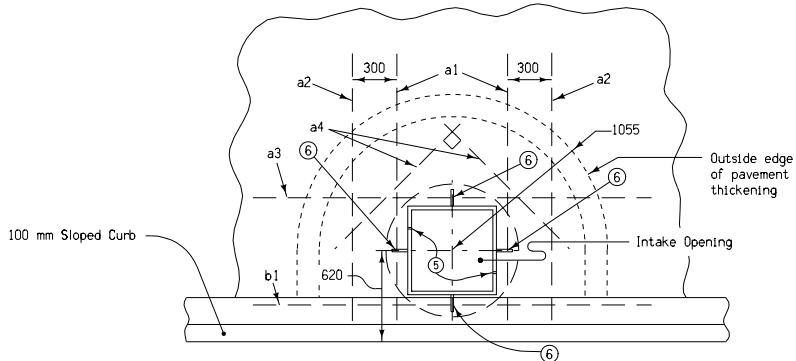


SECTION B-B THROUGH INTAKE

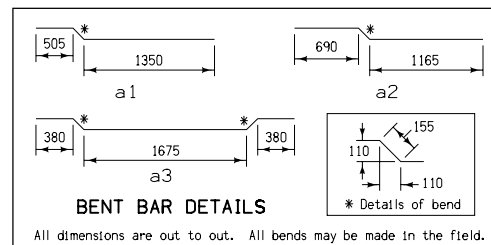


DETAILS OF GRATE POSITIONING BOLT



REINFORCING LAYOUT

Note: Place bars a1, a3, & b1 through holes in intake casting.



BENT BAR DETAILS

All dimensions are out to out. All bends may be made in the field.

REINFORCING BAR LIST						
MARK	SIZE	LOCATION	SHAPE	NO.	LENGTH	MASS
a1 ⑥	15	Shoulder	—	2	2010	6 kg
a2	15	Shoulder	—	2	2010	6 kg
a3 ⑥	15	Shoulder	—	1	2745	4 kg
a4	15	Shoulder	—	2	1220	4 kg
b1 ⑥	15	Curb	—	1	2665	4 kg
Total						24 kg

GENERAL NOTES:

Precast base shall be constructed using WWF 100 x 100 - W2.9 reinforcing or equivalent.

All joints in corrugated metal pipe made with connecting bands shall be installed with approved asphaltic sealer to ensure a water-tight joint.

Flow Line (A) elevation is 30 mm below Form Grade Elevation.

Flow Line (B) elevation is 1.75 meters below flow line (A).

Flow Line (C) elevation is 0 - 150 mm above ditch grade.

For actual flow line elevations of (A), (B), (C), and dimension L1 and L2, see "Tabulation of Bridge End Drain".

For Details of Iron Castings, See Standard Road Plans RA-67A, RA-67B, and RA-67C.

- Before backfilling around the intake assembly, wrap two thicknesses of engineering fabric around the settlement collar. Tape all the way around with 50 mm duct tape immediately below the flange of upper section and 100 mm below the top of well pipe.
- Slip joint casting shall be fastened temporarily with (4) 12.7 mm cap screws during pavement construction. Cap screws shall be removed after pavement is hardened.
- Mortar grout shall meet the requirements of Article 4149.07 of the current specifications.
- 585 mm x 380 mm slot for insertion of 300 mm corrugated metal pipe.
- Field place 12.7 mm x 100 mm long bolt in upstream side and bend underside to prevent removal.
- Reinforcing shall be placed through the appropriate holes in the intake casting.
- Frame casting fastened to Upper Collar casting at 4 locations using 12.7 mm x 50 mm long hex bolts and 12.7 mm nuts.

All dimensions given in millimeters unless noted.

METRIC VERSION	M	Iowa Department of Transportation Highway Division	
		STANDARD ROAD PLAN RF-38(2)	
		REVISION: Revise general notes.	REVISION NO. 3
		APPROVED BY <i>William J. Sten</i> DESIGN/METHODS ENGINEER	REVISION DATE 04-20-04
		INTAKE FOR BRIDGE END DRAIN (SHEET 2 OF 2)	