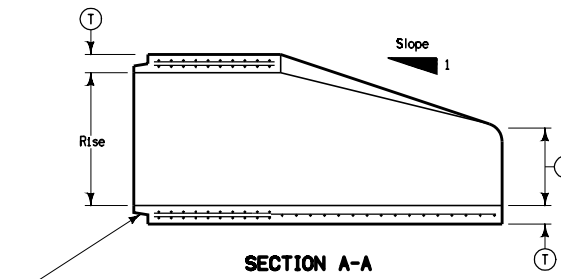
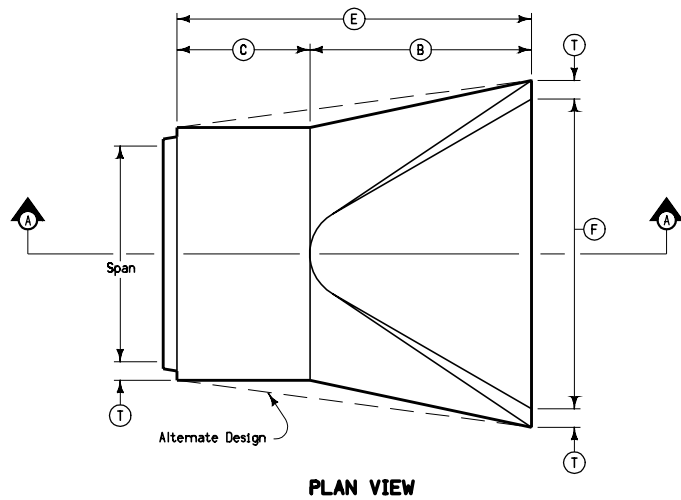


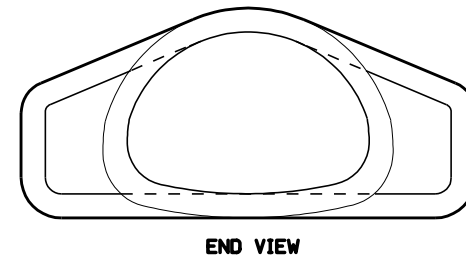
Apron Reinforcement shall comply with RF-41.

Dimension "E" shown is minimum and shall be considered the design length. Any difference between the actual length of concrete apron installed and the length indicated hereon shall be appropriately adjusted for the length of concrete culvert pipe furnished.

① Dimensions for tongue and groove connections shall be as indicated on RF-41.



Tongue end on Inlet end section. ①  
Groove end on outlet end section.  
(Inlet end section shown.)



| NOMINAL DIMENSIONS<br>SPAN X RISE<br>mm | EQUIVALENT<br>DIA.<br>mm | MASS<br>PER<br>SECTION<br>kg | SPAN<br>mm | RISE<br>mm | SLOPE | APPROXIMATE DIMENSIONS<br>mm |     |      |      |      |      |
|---|--------------------------|------------------------------|------------|------------|-------|------------------------------|-----|------|------|------|------|
|   |                          |                              |            |            |       | T                            | A   | B    | C    | E    | F    |
| 560 x 345                               | 450                      | 500                          | 560        | 345        | 3 : 1 | 60                           | 175 | 685  | 1145 | 1830 | 915  |
| 725 x 460                               | 600                      | 790                          | 725        | 455        | 3 : 1 | 90                           | 215 | 990  | 835  | 1830 | 1220 |
| 920 x 570                               | 750                      | 1500                         | 920        | 570        | 3 : 1 | 100                          | 240 | 1270 | 1170 | 2440 | 1525 |
| 1110 x 675                              | 900                      | 1970                         | 1110       | 675        | 3 : 1 | 115                          | 280 | 1525 | 915  | 2440 | 1830 |
| 1300 x 795                              | 1050                     | 2380                         | 1300       | 795        | 3 : 1 | 115                          | 400 | 1525 | 915  | 2440 | 1980 |
| 1485 x 915                              | 1200                     | 2900                         | 1485       | 915        | 3 : 1 | 125                          | 530 | 1525 | 915  | 2440 | 2135 |
| 1650 x 1015                             | 1350                     | 3560                         | 1650       | 1015       | 3 : 1 | 140                          | 650 | 1525 | 915  | 2440 | 2285 |
| 1855 x 1145                             | 1500                     | 4300                         | 1855       | 1145       | 3 : 1 | 150                          | 785 | 1525 | 915  | 2440 | 2440 |
| 2235 x 1370                             | 1800                     | 6150                         | 2235       | 1370       | 2 : 1 | 180                          | 785 | 1525 | 990  | 2515 | 3050 |
| 2590 x 1575                             | 2100                     | 8140                         | 2590       | 1575       | 2 : 1 | 205                          | 725 | 2110 | 485  | 2590 | 3660 |

All dimensions given in millimeters unless noted.

|   |   |                                 |
|---|---|---------------------------------|
| <b>M</b><br><b>METRIC VERSION</b>                 | <br>Iowa Department<br>of Transportation  | REVISION<br>NEW   10-16-07      |
|   |   | <b>RF-42(1)</b><br>SHEET 1 of 1 |
|   | <b>STANDARD ROAD PLAN</b>   |                                 |
|   | REVISIONS: New. Replaces RF-42.<br><i>Deanna Mufsh</i><br>APPROVED BY DESIGN METHODS ENGINEER |                                 |
| <b>CONCRETE ARCH<br/>APRONS</b><br>(Sheet 1 of 2) |   |                                 |