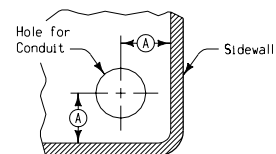




TYPE 1



CORNER DETAILS OF JUNCTION BOX



CONDUIT LOCATION FOR LOCK NUT AND BUSHING CLEARANCE - 'A'										
Conduit Size	16	21	27	35	41	53	63	78	91	103
Minimum Clearance	25	25	29	35	38	44	54	63	73	79

[illegible]

GENERAL NOTES:

The details indicated hereon are for typical junction boxes used in electrical circuitry for highway lighting. Alternate designs may be submitted to the Engineer for approval.

Materials and methods of construction shall be in accordance with current Standard and Supplemental Specifications.

Refer to appropriate Standard Road Plans and project plans for additional details.

Type 1 Junction Boxes shall conform to the requirements of "NEMA 4 – Watertight", UL approved, and be of the outside flange variety as shown.

Type 2 Junction Boxes shall conform to the requirements of "NEMA 3 – Raintight", UL approved, and be of the inside flange variety as shown.


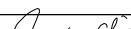
Covers of junction boxes installed in locations subject to pedestrian traffic shall have an approved anti-skid pattern. Approved galvanized steel covers may be substituted for cast iron.

Grounding buttons shall be fitted with 9.5 millimeter by 20 millimeter brass screws unless otherwise specified.

Type, size and location of holes will be shown on the plans. Drilled and tapped holes shall be bossed, if necessary, to provide 5 full threads.

Slip holes shall be used only for junction box drains unless otherwise specified on plans.

**All dimensions given in millimeters unless noted.**

<b>M</b>	 <b>Iowa Department of Transportation</b> <b>Project Development Division</b>	
	<b>STANDARD ROAD PLAN</b>	<b>RM-37</b>
	REVISION: New - replaces Standard Road Plan RM-9.	REVISION NO. New
	 12-28-98	REVISION DATE 04-27-99
	APPROVED BY DESIGN METHODS ENGINEER	
<b>METRIC VERSION</b>	JUNCTION BOX (CAST IRON)	