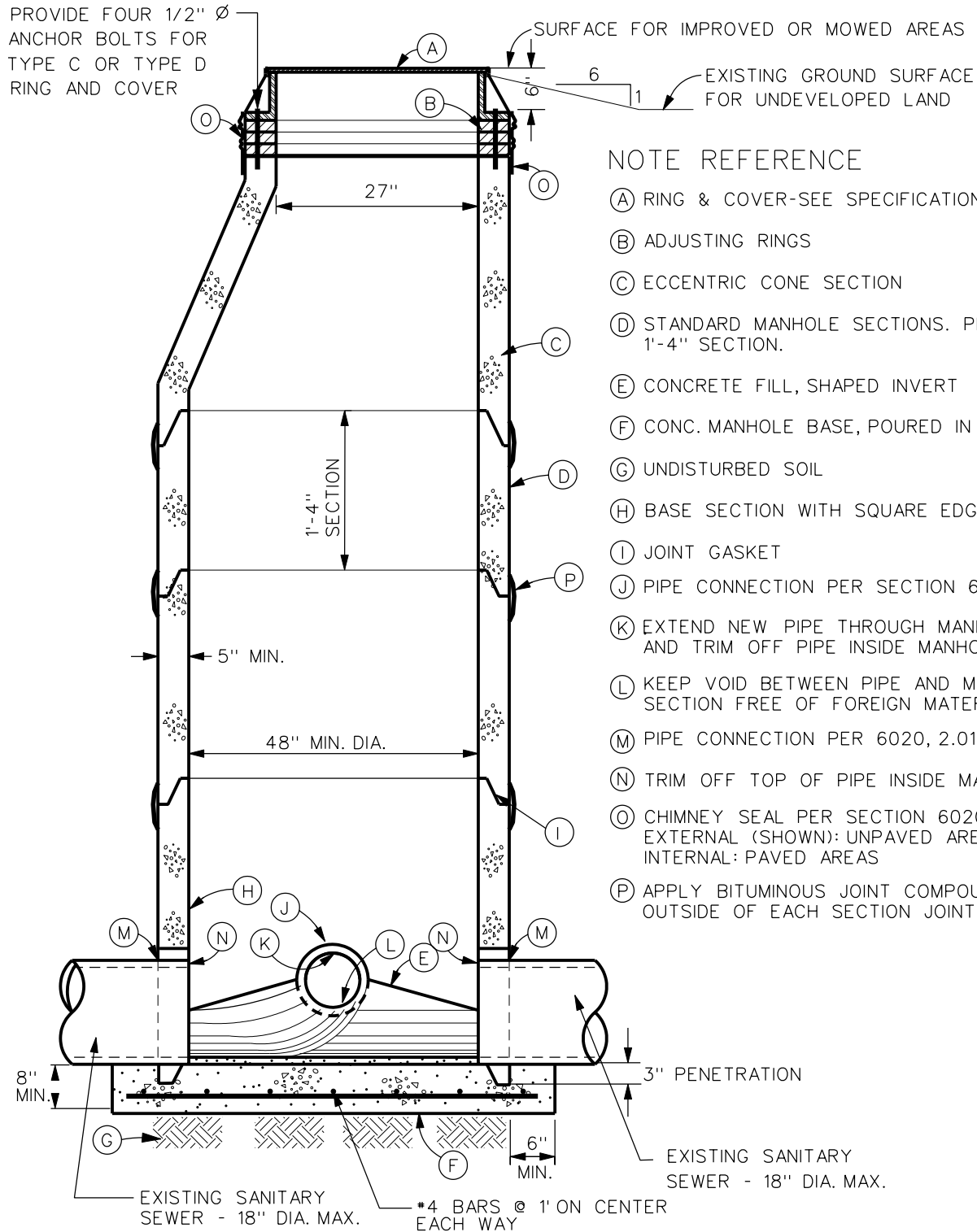


# URBAN STANDARD SPECIFICATIONS for PUBLIC IMPROVEMENT MANUAL



## NOTE REFERENCE

- (A) RING & COVER-SEE SPECIFICATIONS
- (B) ADJUSTING RINGS
- (C) ECCENTRIC CONE SECTION
- (D) STANDARD MANHOLE SECTIONS. PROVIDE ONE 1'-4" SECTION.
- (E) CONCRETE FILL, SHAPED INVERT
- (F) CONC. MANHOLE BASE, POURED IN PLACE
- (G) UNDISTURBED SOIL
- (H) BASE SECTION WITH SQUARE EDGED BEARING
- (I) JOINT GASKET
- (J) PIPE CONNECTION PER SECTION 6020, 2.01I.
- (K) EXTEND NEW PIPE THROUGH MANHOLE WALL AND TRIM OFF PIPE INSIDE MANHOLE
- (L) KEEP VOID BETWEEN PIPE AND MANHOLE SECTION FREE OF FOREIGN MATERIAL
- (M) PIPE CONNECTION PER 6020, 2.01I, 3
- (N) TRIM OFF TOP OF PIPE INSIDE MANHOLE
- (O) CHIMNEY SEAL PER SECTION 6020, 2.06 & 3.04  
EXTERNAL (SHOWN): UNPAVED AREAS  
INTERNAL: PAVED AREAS
- (P) APPLY BITUMINOUS JOINT COMPOUND TO OUTSIDE OF EACH SECTION JOINT

## NOTES:

- 1) MAX. DIA. OF NEW SEWER IS 18". LARGER DIAMETER MAY BE USED WITH JURISDICTIONAL ENGINEER APPROVAL.
- 2) TO BE USED ONLY WHEN BOTH EXISTING SANITARY LINES REMAIN IN PLACE.
- 3) MIN. DEPTH 7'

2	10/19/04		3) MIN. DEPTH 7'	
REV.	DATE	BY	TYPE "I" MANHOLE (SANITARY SEWER)	FIGURE: 6020.4
DATE: 01-01-98				SHEET 1 OF 1