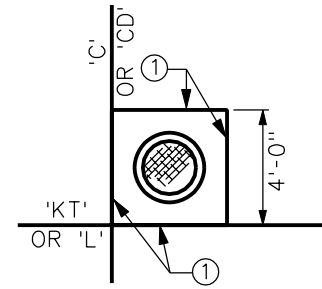
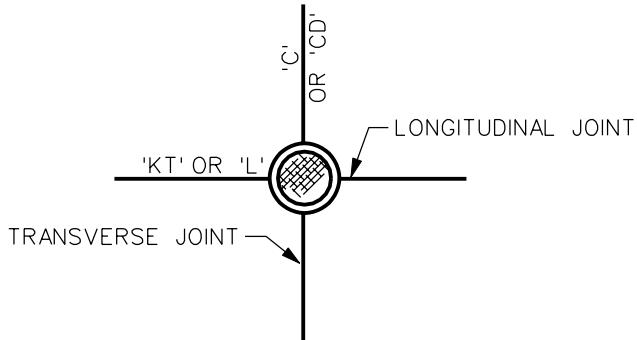


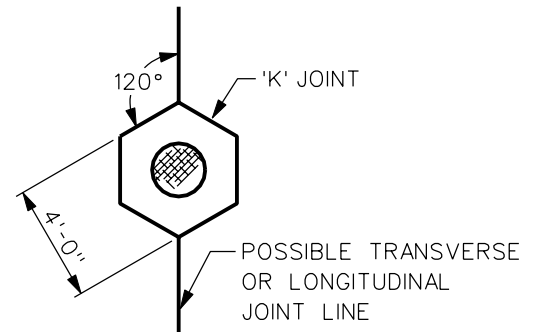
BOX-OUT DETAIL IN PCC PAVEMENT
WHERE THE MANHOLE IS INTERSECTED BY
THE LONGITUDINAL AND TRANSVERSE JOINTS



BOX-OUT DETAIL IN PCC PAVEMENT
WHERE THE MANHOLE IS OFFSET FROM THE
LONGITUDINAL AND TRANSVERSE JOINTS

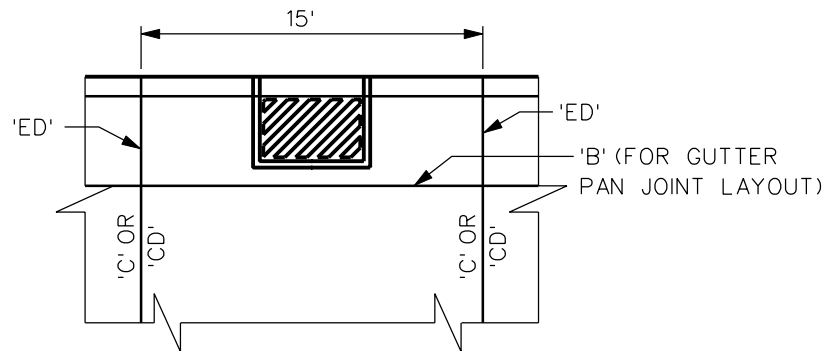


② NO BOX-OUT IN PCC PAVEMENT
FOR TELESCOPING (3 PIECE) MANHOLE ONLY



② BOX-OUT DETAIL IN PCC PAVEMENT
WHERE NO JOINT LINES ARE PRESENT
OR AT A SINGLE JOINT LINE

- ① 'KT' OR 'BT' JOINT IF TELESCOPING (3-PIECE) RING AND COVER (TYPE B, D, & F) IS USED.
'E' JOINT IF NON-TELESCOPING RING AND COVER (TYPE A & C) IS USED.
 - ② THE MANHOLE PLACEMENT SHOWN MAY BE USED ONLY UPON APPROVAL OF THE JURISDICTIONAL ENGINEER. USE ONLY WITH TYPE B, D, & F RING AND COVER (TELESCOPING).
- A BOXOUT IS REQUIRED IF TYPE A OR C RING AND COVER IS ALLOWED IN PCC PAVING.
 - WHEN PAVEMENT JOINTS DO NOT INTERSECT THE MANHOLE AT ITS CENTER USE BOXOUT TO PROVIDE JOINT CONTINUITY.
 - SHORTEN JOINTING PATTERN ON EITHER SIDE OF OPENING TO PERMIT JOINTS TO INTERSECT ROUND CASTING AND FALL AT THE EDGES OF BOXOUTS FOR RECTANGULAR STRUCTURES.
 - BOXOUTS ARE REQUIRED WHENEVER A MANHOLE IS REPAIRED IN AN EXISTING PAVEMENT.



SIZE BOX OUT AS SHOWN IN FIGURE 6030.16

INTAKE BOX OUT

1	10/19/04		<u>INTAKE BOX OUT</u>	
REV.	DATE	BY	JOINT LOCATIONS AROUND MANHOLES AND INTAKES	FIGURE: 7010.2B
DATE: 01/25/01				SHEET 1 OF 1