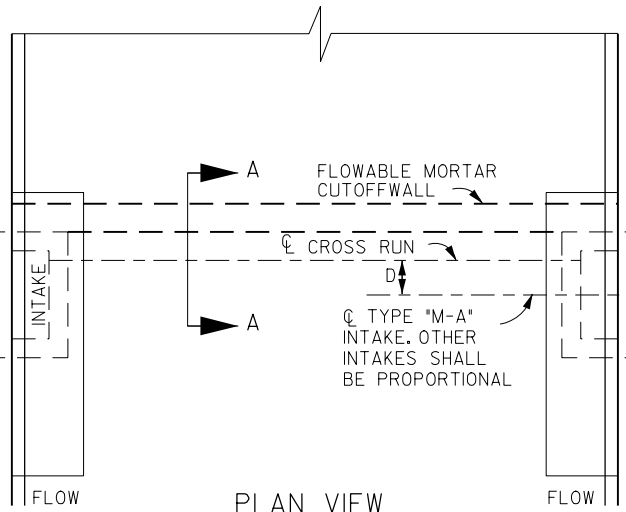
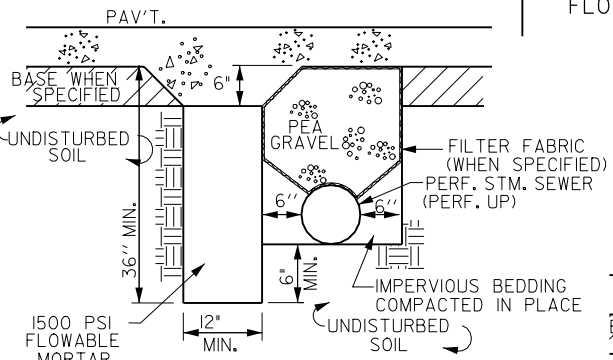


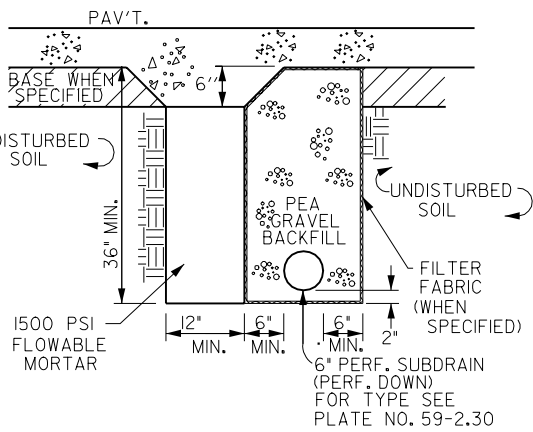
FLOWABLE MORTAR CUTOFFWALL WITHOUT SEWER



PLAN VIEW
FLOWABLE MORTAR CUTOFFWALL & CROSS RUN LOCATION



SECTION A-A
FLOWABLE MORTAR CUTOFFWALL & STORM SEWER
SCALE: 1/2" = 12"



FLOWABLE MORTAR CUTOFFWALL WITH SUBDRAIN
SCALE: 1/2" = 12"

NOTE:
LENGTH OF HEADER
TO BE BACK OF CURB
TO BACK OF CURB.

DISTANCE FROM L^C INTAKE
TO \varnothing CROSSRUN

SIZE	D
15" RCP	0.7'
15" CMP	0.8'
18" RCP	0.5'
18" CMP	0.7'

I	10/2002	
REV.	DATE	BY
	DATE: 01-01-98	

FLOWABLE MORTAR CUTOFFWALL

FIGURE: 7040.7

SHEET 1 OF 1