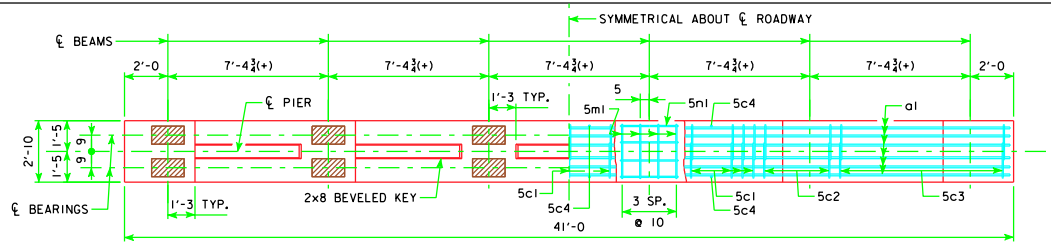
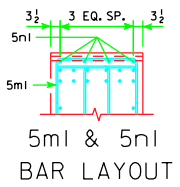


REVISED 01-10 - ADDED PIER NOTES FROM H40-58-06 STANDARD.



CAP PLAN

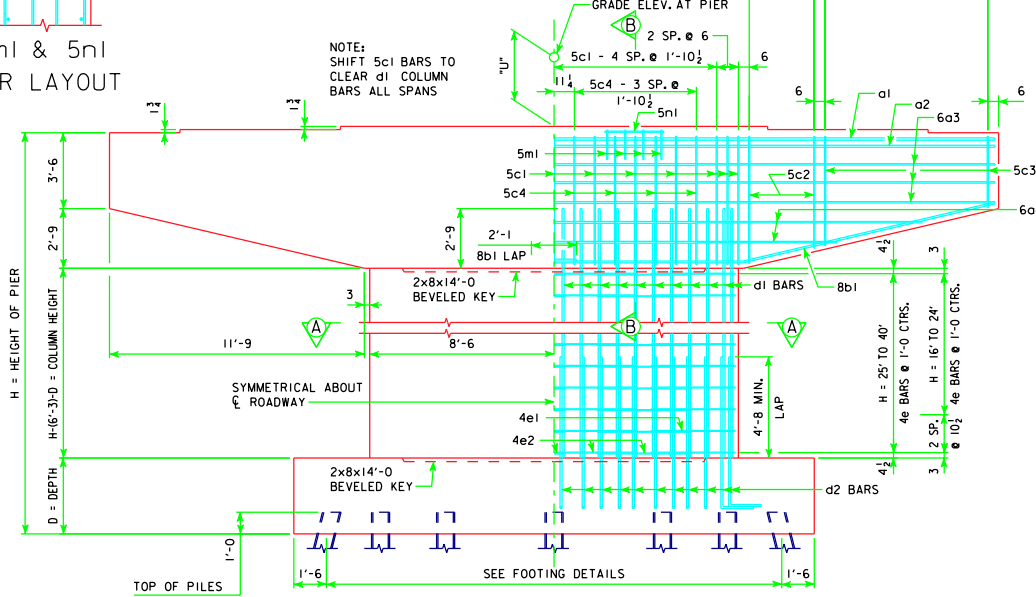


5m1 & 5n1
BAR LAYOUT

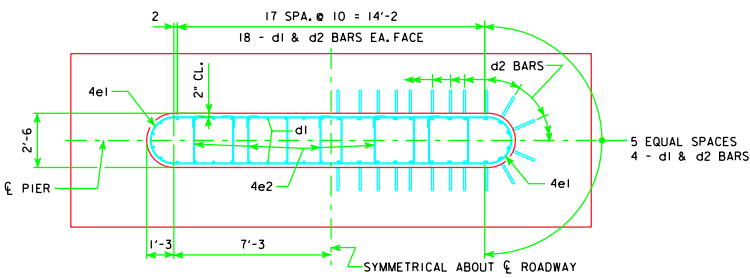
5c2 - 3 SP. @ 1'-0" = 3'-0" - 138'-10, 151'-4, 163'-10
 5c2 - 4 SP. @ 9" = 3'-0" - 176'-4, 188'-10, 201'-4
 5c2 - 6 SP. @ 6" = 3'-0" - 213'-10, 226'-4, 243'-0

8 SP. @ 11 1/4" = 7'-6" 138'-10, 151'-4, 163'-10, 176'-4, 188'-10, 201'-4, 213'-10, 226'-4 - 5c3
 9 SP. @ 10" = 7'-6" 243'-0 - 5c3

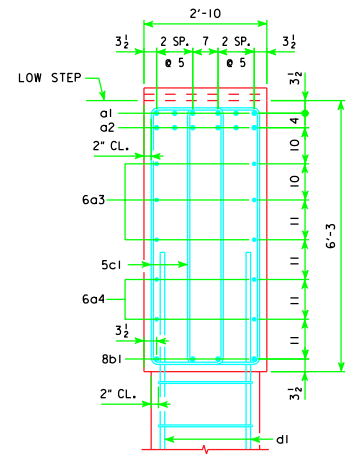
NOTE:
SHIFT 5c1 BARS TO CLEAR d1 COLUMN BARS ALL SPANS



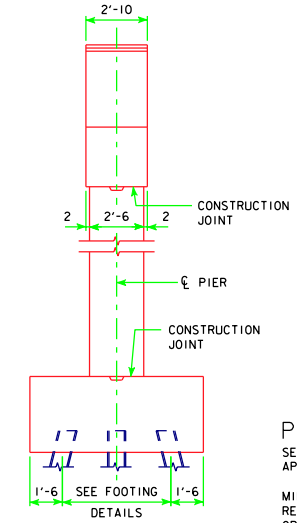
FRONT ELEVATION



SECTION A-A




SECTION B-B



END ELEVATION

PIER NOTES:

- SEE "TEE PIER NOTES" ON H40-02-06 FOR NOTES REGARDING APPLICATION OF THESE PIER STANDARDS.
- MINIMUM CLEAR DISTANCE FROM FACE OF CONCRETE TO NEAR REINFORCING BAR SHALL BE 2 INCHES UNLESS OTHERWISE NOTED OR SHOWN.
- ELIMINATE 2x8 BEVELED KEYWAY ON TOP OF CAP FOR EXPANSION PIERS.
- FOR SIZE OF BEARING PADS, SEE H40-44-06.
- SEE SHEET H40-09-06 FOR "U" DIMENSION.

LATEST REVISION DATE 01-10	APPROVED BY BRIDGE ENGINEER <i>Thomas E. Mc Donnell</i>		
		STANDARD DESIGN - 40' ROADWAY, THREE SPAN BRIDGE PRETENSIONED PRESTRESSED CONCRETE BEAM BRIDGES AUGUST, 2009	
TEE PIER CAP AND COLUMN 0° SKEW		H40-57-06	