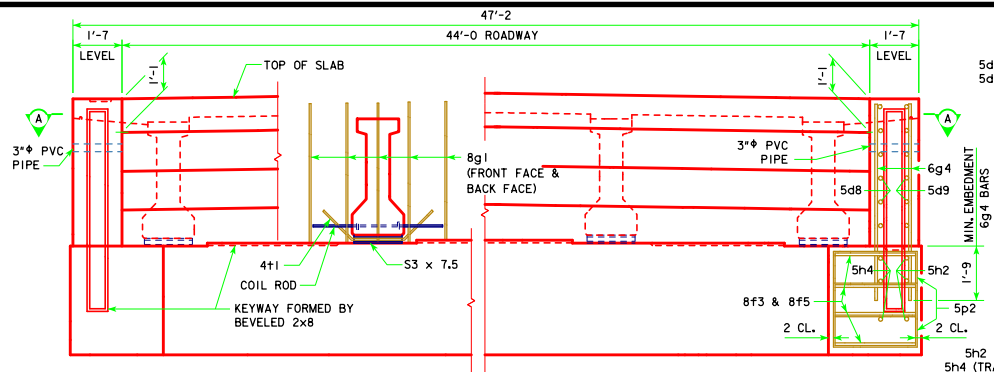
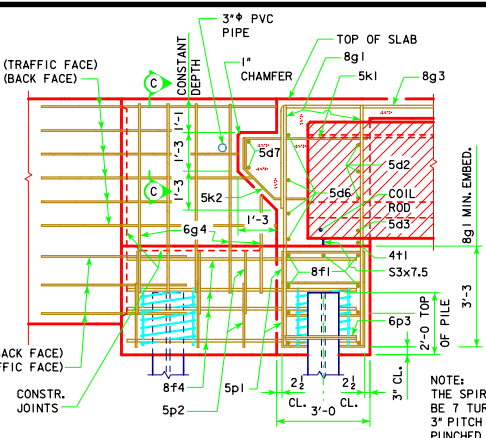


REVISED 05-13 - REVISION FOR LRPD PILE DESIGN.



PART REAR ELEVATION AT ABUTMENT
NOTE: TOP OF ABUTMENT SHOWN FOR SOLID BARRIER RAIL



PART SECTION B-B

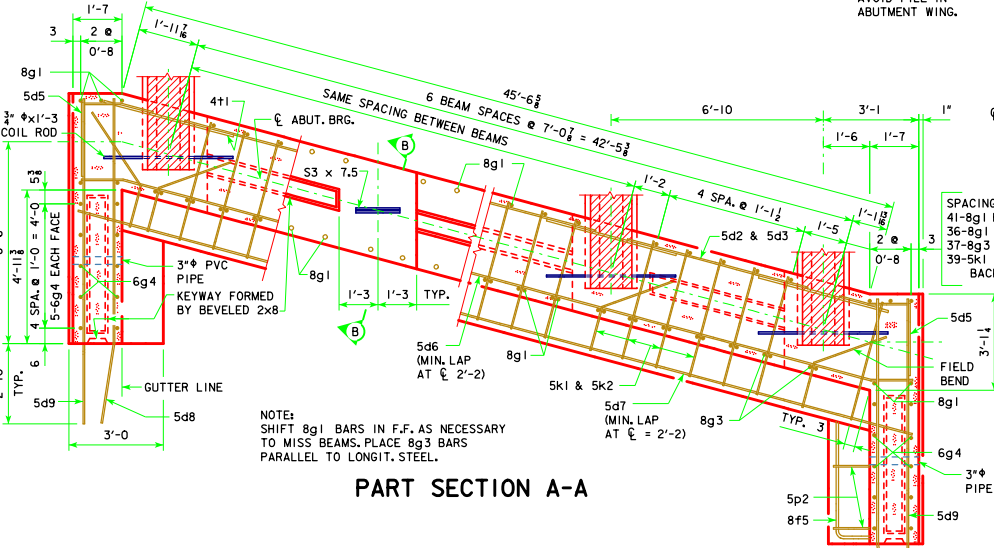
ABUTMENT NOTES:
MINIMUM CLEAR DISTANCE FROM FACE OF CONCRETE TO NEAR REINFORCING BAR IS TO BE 2\"/>

IF NECESSARY TO PREVENT DAMAGE TO THE END OF THE BRIDGE DECK OR BACKWALL FROM CONSTRUCTION EQUIPMENT, AN APPROPRIATE METHOD OF PROTECTION APPROVED BY THE ENGINEER SHALL BE PROVIDED BY THE BRIDGE CONTRACTOR AT NO EXTRA COST TO THE COUNTY OR STATE.

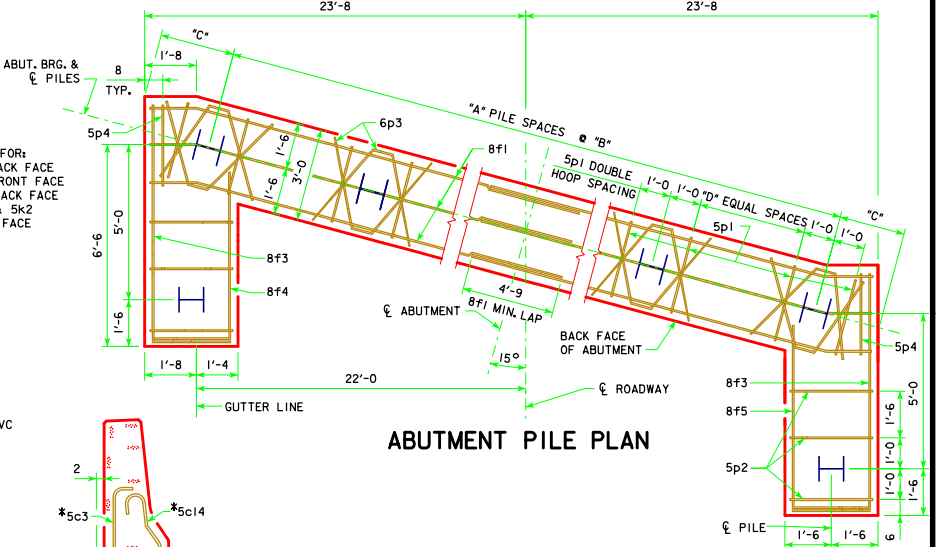
ABUTMENT PILES SHALL BE DRIVEN TO VALUES SHOWN IN DESIGN PLANS.

BARRIER RAIL NOT SHOWN IN DETAILS.

IF ROCK IS CLOSER THAN 15' BELOW ABUTMENT FOOTING, SPECIAL ANALYSIS MAY BE REQUIRED.



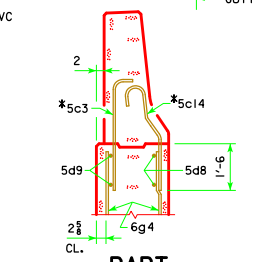
PART SECTION A-A



ABUTMENT PILE PLAN

ABUTMENT PILE SPACING		201'-4	213'-10	226'-4	243'-0
WITH STEEL H-PILES	"A" PILE SPACES	7	8	8	8
	"B" (FT. - IN.)	6'-4	5'-6	5'-6	5'-6
	"C" (FT. - IN.)	2'-4	2'-6	2'-6	2'-6
	"D" EQUAL SPACES	4	3	3	3
	NO. OF PILES PER ABUT.	10	11	11	11
	PI, STRENGTH I DESIGN LOAD (KIPS)	145	133	138	146

NOTE: PI, STRENGTH I DESIGN LOAD (KIPS) IS NOT THE VALUE USED IN THE FIELD FOR DRIVING PILES.



PART SECTION C-C

* NOTE: SEE BARRIER RAIL SHEET FOR DETAILS. REINFORCING BARS 5c3 AND 5c14 ARE INCLUDED IN SUPERSTRUCTURE QUANTITIES.

LATEST REVISION DATE 05-13 APPROVED BY BRIDGE ENGINEER 	 STANDARD DESIGN - 44' ROADWAY, THREE SPAN BRIDGE PRETENSIONED PRESTRESSED CONCRETE BEAM BRIDGES MARCH, 2007
	ABUTMENT DETAILS 15° SKEW C BEAMS
	H44-12-07