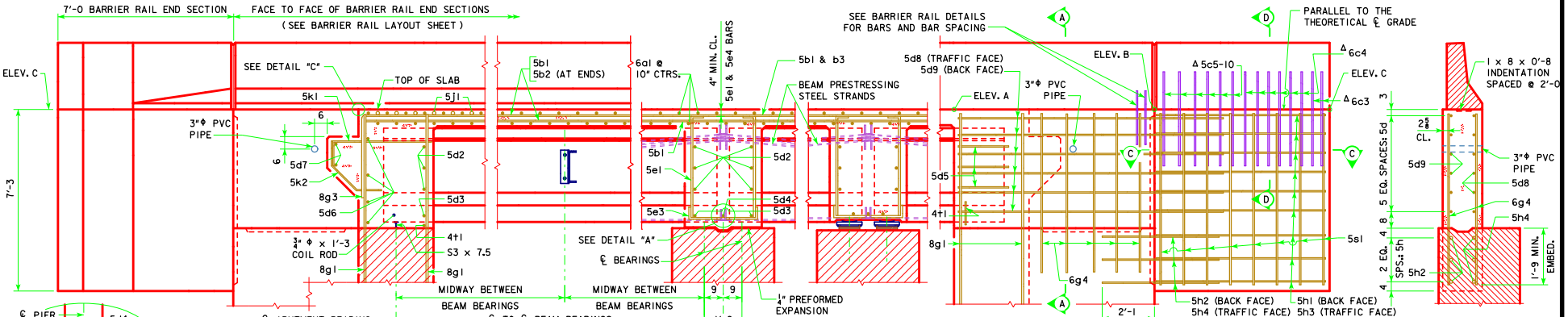


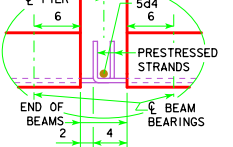
NOTE: BRIDGE IS SYMMETRICAL ABOUT $\bar{\bar{C}}$



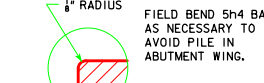
PART LONGITUDINAL SECTION NEAR GUTTER
(FOR DETAILS OF INTERMEDIATE DIAPHRAGM SEE SHEET H44-31-14)

PART END VIEW AT ABUTMENT
PROVIDE ELEVATIONS A, B AND C IN THE BRIDGE PLAN SHEETS.
1 1/2" ϕ HOLE (TYP.)

SECTION A-A
MIDWAY BETWEEN BEARINGS

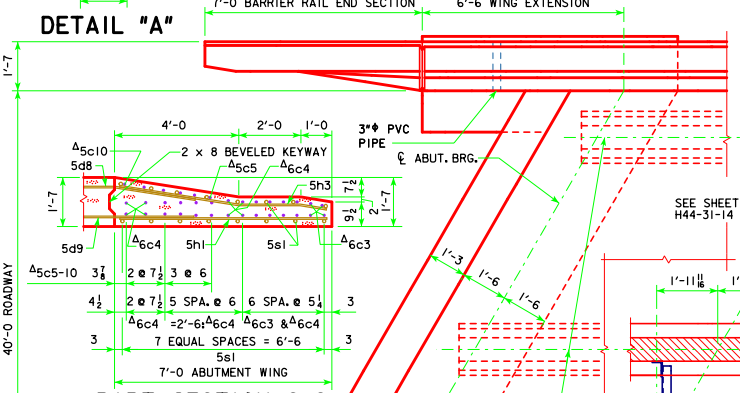


NOTE: PLUG 3" ϕ PVC PIPE WITH EXPANDING FOAM PRIOR TO BACKFILLING BEHIND ABUTMENTS.

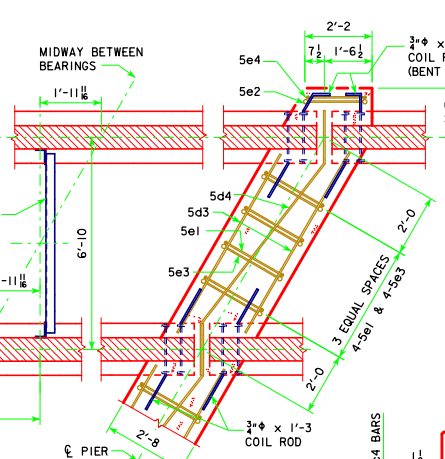


DETAIL "C"

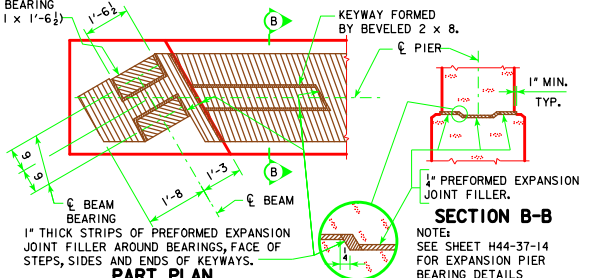
LOCATION OF BEAM COIL TIES AND STEEL DIAPHRAGM BOLT HOLES



PART SECTION C-C

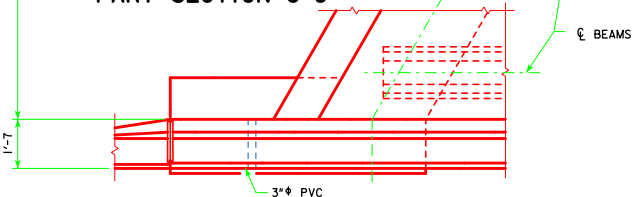


PART SECTION AT PIER



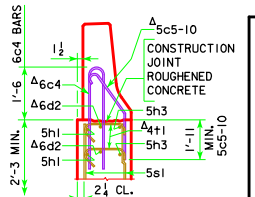
SECTION B-B

NOTE: SEE SHEET H44-37-14 FOR EXPANSION PIER BEARING DETAILS



PART PLAN

Δ NOTE: SEE END SECTION DETAILS IN THESE PLANS FOR DETAILS OF BARRIER RAIL END SECTION. REINFORCING BARS 6c3, 6c4, 5c5-10, 6a2 & 4+1 ARE INCLUDED IN THE BARRIER RAIL QUANTITIES.



SECTION D-D

TOP OF FIXED PIER DETAILS

| | | |
|--|--|------------------|
| LATEST REVISION DATE <i>Thomas E. M. Donnell</i> APPROVED BY BRIDGE ENGINEER | IOWADOT Highway Division | |
| | STANDARD DESIGN - 44' ROADWAY, THREE SPAN BRIDGE PRETENSIONED PRESTRESSED CONCRETE BEAM BRIDGES SEPTEMBER, 2014 | |
| | LONGITUDINAL SECTION 30° SKEW C BEAMS | H44-21-14 |