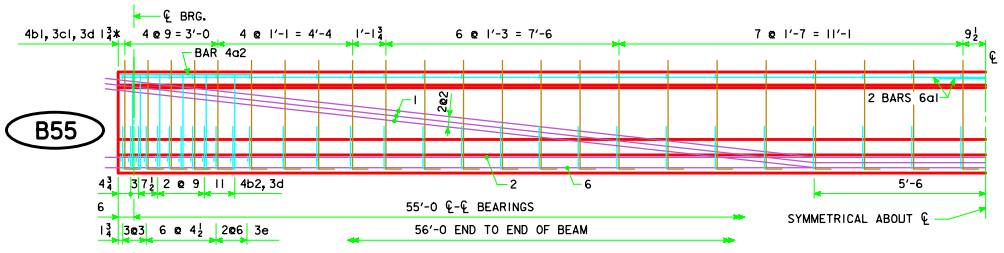
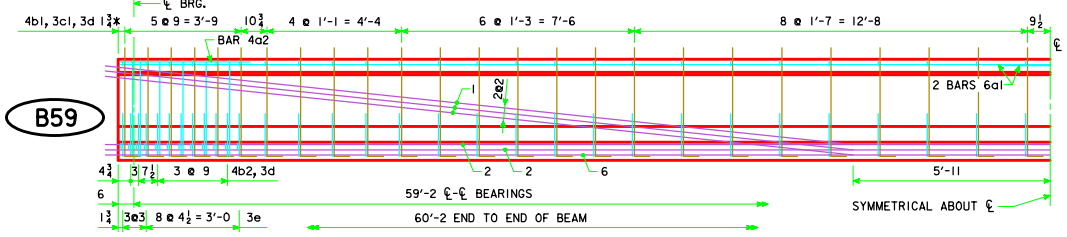


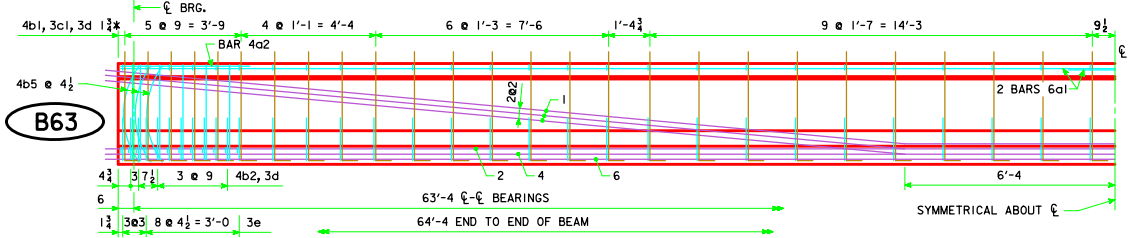
B50



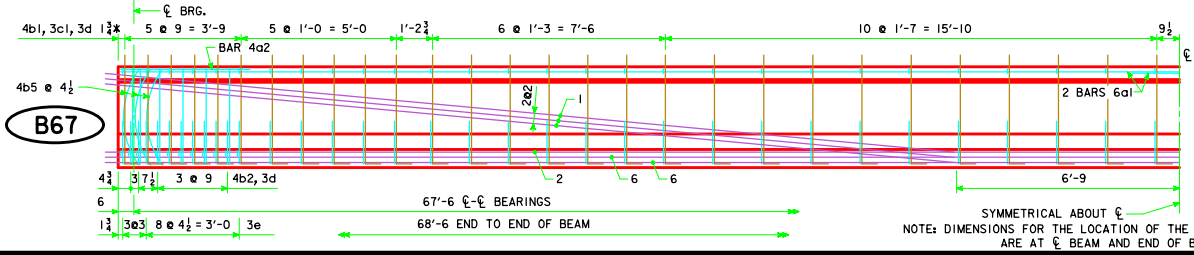
B55



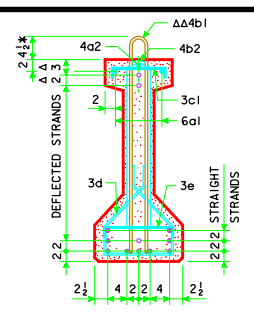
B59



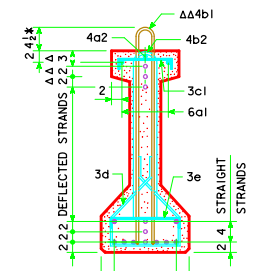
B63



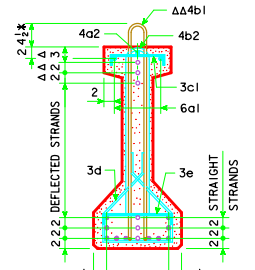
B67



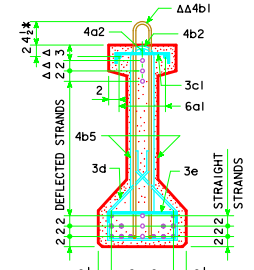
BEAM B50



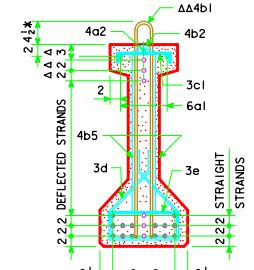
BEAM B55



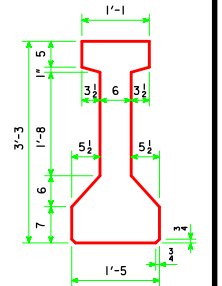
BEAM B59



BEAM B63



BEAM B67



"B" BEAM CROSS SECTION

$A = 382.5 \text{ in}^2$
 $Y_p = 17.06 \text{ in}$
 $I = 62,000 \text{ in}^4$

NOTE: BARS 3d ARE TO BE PLACED IN PAIRS.
 ○ DEFLECTED STRANDS
 * KEEP
 Δ DIMENSIONS AT END OF BEAM
 ΔΔ EPOXY COATED BARS

NOTE: DIMENSIONS FOR THE LOCATION OF THE DEFLECTED STRANDS ARE AT \bar{c} BEAM AND END OF BEAM.

LATEST REVISION DATE <i>Thomas E. M. Dwyer</i> APPROVED BY BRIDGE ENGINEER	
	STANDARD DESIGN - 44' ROADWAY, THREE SPAN BRIDGE PRETENSIONED PRESTRESSED CONCRETE BEAM BRIDGES SEPTEMBER, 2014
	<div style="width: 45%; text-align: center;">B BEAM DETAILS</div> <div style="width: 45%; text-align: center;">H44-28-14</div>