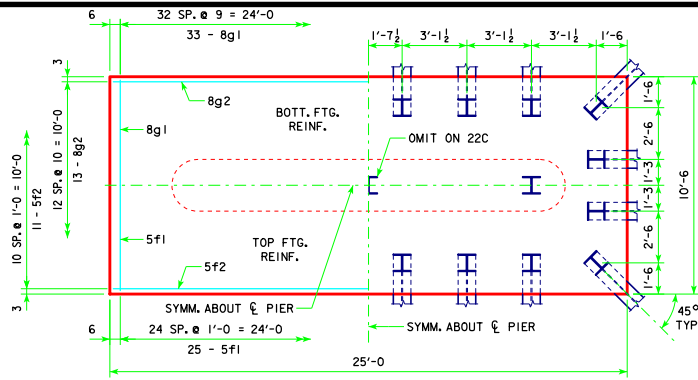
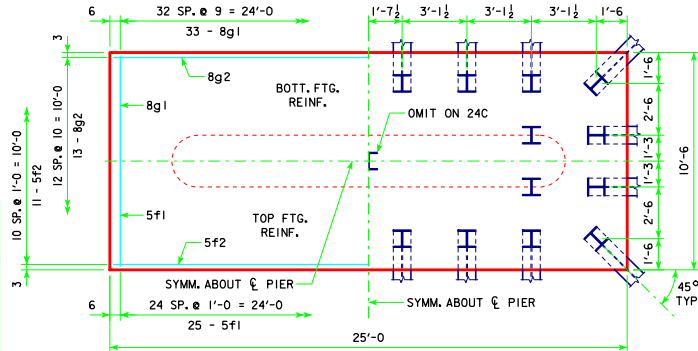


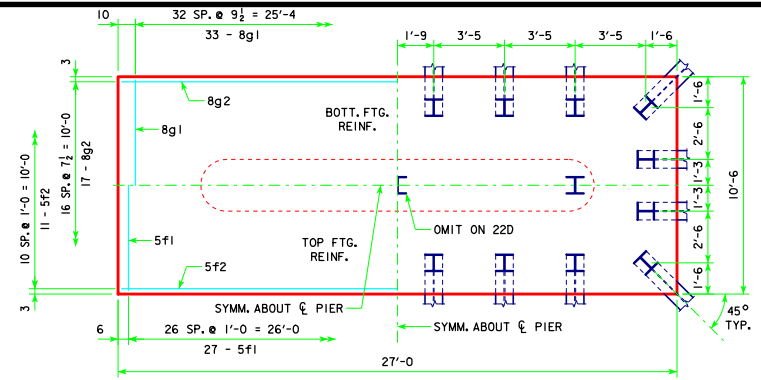
TYPICAL SECTION



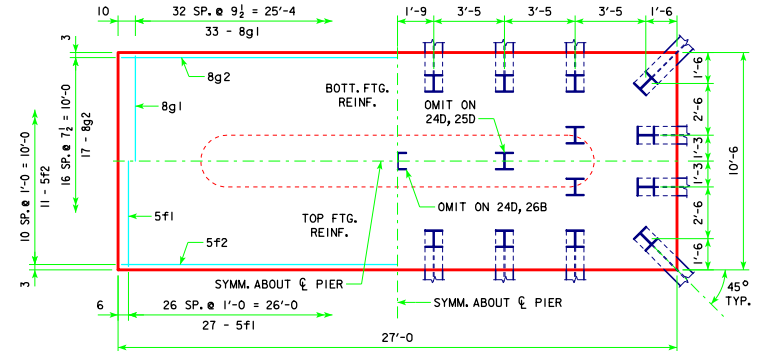
4'-0 x 10'-6 x 25'-0 FOR 22C & 23B



4'-0 x 10'-6 x 25'-0 FOR 24C & 25C



4'-0 x 10'-6 x 27'-0 FOR 22D & 23C



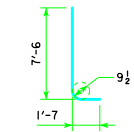
4'-0 x 10'-6 x 27'-0 FOR 24D, 25D & 26B  
FOOTING NOTES:

THESE FOOTINGS ARE DESIGNED AND DETAILED TO BE USED WITH THE CAP AND COLUMN DETAILS OF THE TEE PIERS AS SHOWN ON SHEET H44-58-14.

BATTER PILES IN EXTERIOR ROWS 1/4 IN THE DIRECTION SHOWN.

STEEL PILING USED AS POINT BEARING SHALL HAVE A MINIMUM DISTANCE OF APPROXIMATELY 10 FEET FROM BOTTOM OF FOOTING TO TOP OF BEARING ROCK. THE PILE LAYOUTS ARE SUCH THAT THE DISTANCE CENTER TO CENTER OF ADJACENT PILING SHALL NOT EXCEED 8'-0.

PIER PILES SHALL BE DRIVEN TO VALUES SHOWN IN DESIGN PLANS.



d2

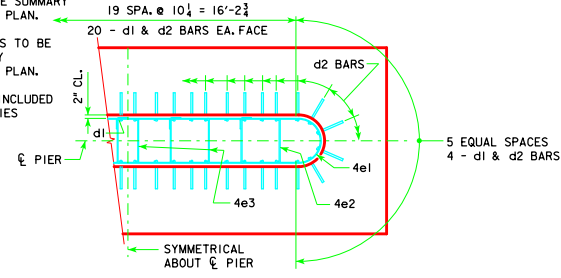
NOTE: D = PIN DIAMETER. DIMENSIONS ARE OUT TO OUT.

H IN. FT.	C ABUT. BRG.	C LAYOUT	PILING (HP10x57)		FOOTING SIZE
			(1) LRPD PU STRENGTH I DES. BRG. (KIPS)		
201'-4	22C		143		4' x 10'-6 x 25'
213'-10	23B		144		
226'-4	24C		142		
243'-0	25C		144		
201'-4	22D		142		4' x 10'-6 x 27'
213'-10	23C		143		
226'-4	24D		142		
243'-0	25D		143		
201'-4	22D		144		4' x 10'-6 x 27'
213'-10	23C		145		
226'-4	24D		144		
243'-0	25D		145		
201'-4	22D		146		4' x 10'-6 x 27'
213'-10	24D		140		
226'-4	24D		145		
243'-0	26B		142		
201'-4	23C		145		4' x 10'-6 x 27'
213'-10	24D		142		
226'-4	25D		144		
243'-0	26B		145		

NOTE: THE REINFORCING STEEL QUANTITY IS TO BE INCLUDED ON THE SUMMARY QUANTITIES SHEET IN THE PLAN.

NOTE: THE CONCRETE QUANTITY IS TO BE INCLUDED ON THE SUMMARY QUANTITIES SHEET IN THE PLAN.

NOTE: THE PILE TYPE IS TO BE INCLUDED ON THE SUMMARY QUANTITIES SHEET IN THE PLAN.



d2 BAR LAYOUT  
(SEE SECTION A-A ON SHEET H44-58-14.)

NOTE: PU, STRENGTH I DESIGN LOAD (KIPS) IS NOT THE VALUE USED IN THE FIELD FOR DRIVING PILES.

FOOTING SIZE	REINFORCING STEEL (ONE FOOTING)			TOTAL WEIGHT (LB.)	STRUCTURAL CONCRETE (CY)
	BAR NO., SIZE & SPACING	LENGTH	WEIGHT (LB.)		
4' x 10'-6 x 25'	d2 48 - #9 AS SHOWN	9'-1	1482	3782	38.9
	f1 25 - #5 @ 1'-0	10'-2	265		
	f2 11 - #5 @ 1'-0	24'-8	283		
	g1 33 - #8 @ 0'-9	10'-2	896		
	g2 13 - #8 @ 0'-10	24'-8	856		
4' x 10'-6 x 27'	d2 48 - #9 AS SHOWN	9'-1	1482	4180	42.0
	f1 27 - #5 @ 1'-0	10'-2	286		
	f2 11 - #5 @ 1'-0	26'-8	306		
	g1 33 - #8 @ 0'-9 1/2	10'-2	896		
	g2 17 - #8 @ 0'-7 1/2	26'-8	1210		

LATEST REVISION DATE	<i>Thomas E. M. Donnell</i> APPROVED BY BRIDGE ENGINEER	<b>IOWADOT</b> Highway Division
<b>PRETENSIONED PRESTRESSED CONCRETE BEAM BRIDGES</b>		
SEPTEMBER, 2014		
<b>TEE PIER-HP10x57 SRL-1 STEEL PILE FOOTINGS</b>		<b>H44-61-14</b>
15° SKEW - H=25' TO 40'		