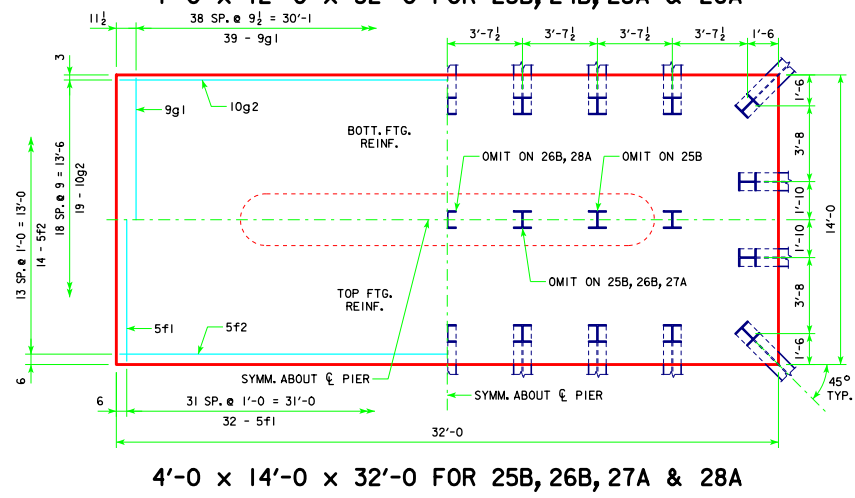
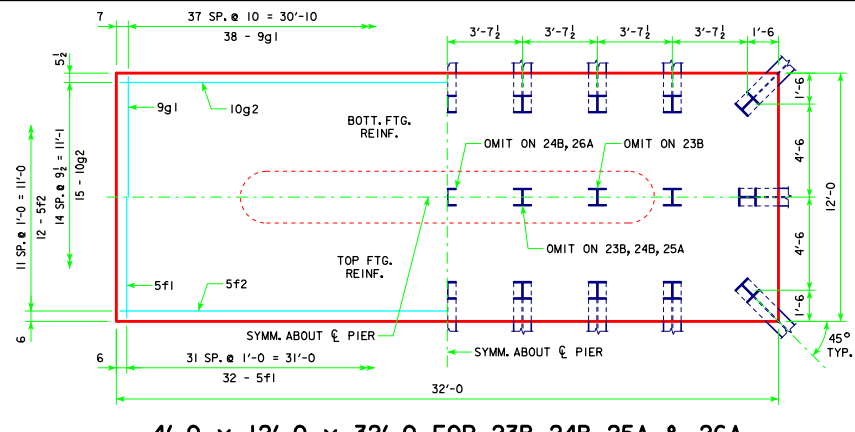
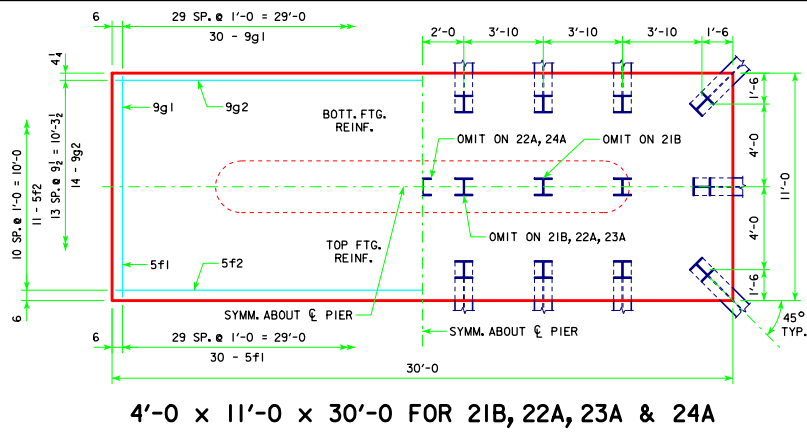


REVISED 05-13 - REVISION FOR LRFD PILE DESIGN.



NOTE:
SEE SHEET RS40-128-10 FOR FOOTING NOTES.

05-13 LATEST REVISION DATE	APPROVED BY BRIDGE ENGINEER	Iowa Department of Transportation Highway Division STANDARD DESIGN - 40' ROADWAY, 3 SPAN BRIDGES ROLLED STEEL BEAM BRIDGES JUNE, 2010
TEE PIER-HPI0x57 SRL-1 STEEL PILE FOOTINGS <small>10° SKEW - SHEET 3</small>		RS40-130-10