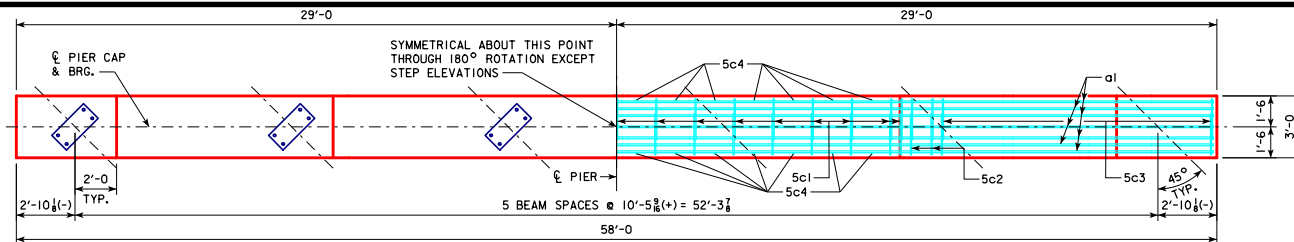


REVISED 02-2017 - CHANGED BEVELED KEYWAY ON PIER COLUMN CAP AND FOOTING TO 3"x10"x23'-0" (WAS 2"x8"x25'-0"). KEYWAY LENGTH CHANGED TO BE 5'-0" LESS THAN WIDTH OF PIER COLUMN.



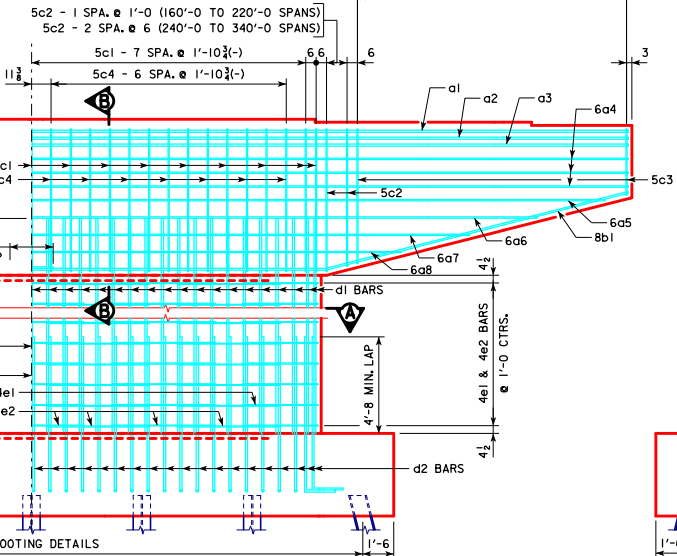
**NOTE:**  
ANCHOR BOLTS REQUIRED FOR FIXED PIER BEARINGS ONLY. FOR BOLT AND BEARING SIZES, SEE RS40-093-14, RS40-094-14 OR RS40-095-14.

**CAP PLAN**

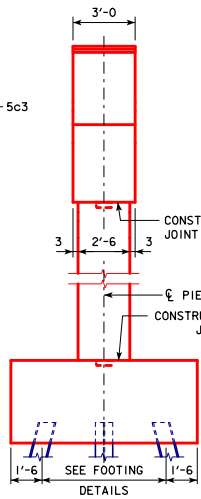
(LAYOUT OF a1 BARS SHOWN IS FOR 160'-0 TO 200'-0 SPANS)

- 160'-0 TO 240'-0 SPANS 5c3 - 13 SPA. @ 1'-0" = 13'-0"
- 260'-0 TO 280'-0 SPANS 5c3 - 17 SPA. @ 9 1/2" (+) = 13'-0"
- 300'-0 TO 340'-0 SPANS 5c3 - 22 SPA. @ 7 1/2" (-) = 13'-0"

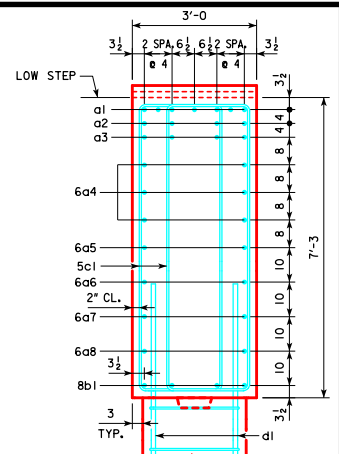
**NOTE:**  
SHIFT 5c1 BARS TO CLEAR d1 COLUMN BARS ALL SPANS.



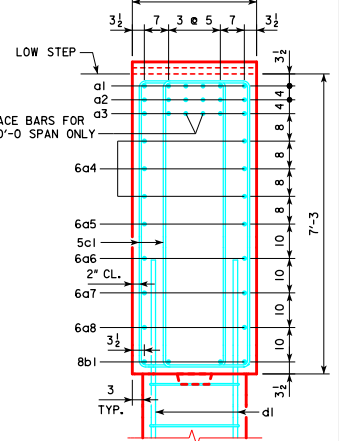
**FRONT ELEVATION**



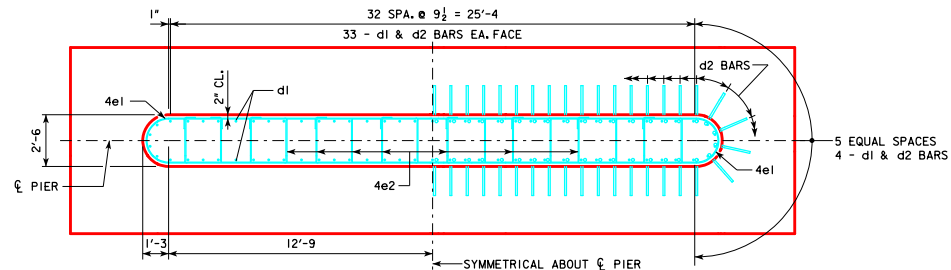
**END ELEVATION**



**SECTION B-B**  
160'-0 TO 200'-0 SPANS



**SECTION B-B**  
220'-0 TO 340'-0 SPANS



**SECTION A-A**

LATEST REVISION DATE  
*Thomas E. McQuinn*  
APPROVED BY BRIDGE ENGINEER



STANDARD DESIGN - 40' ROADWAY, 3 SPAN BRIDGES  
**ROLLED STEEL BEAM BRIDGES**  
OCTOBER, 2014

**TEE PIER CAP & COLUMN DETAILS**  
45° SKEW

**RS40-156-14**