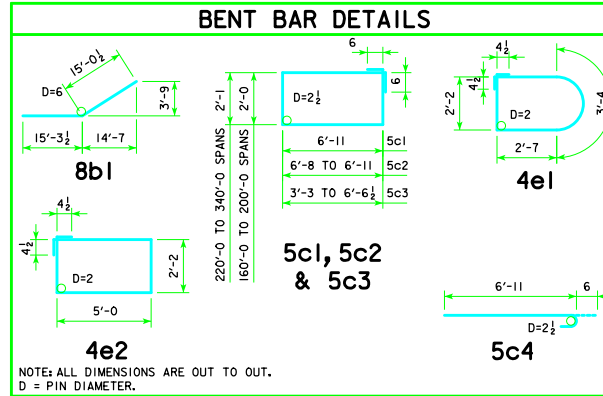


CAP

REINFORCING STEEL	C - C ABUT. BEARINGS		160'-0"		180'-0"		200'-0"		220'-0"		240'-0"		260'-0"		280'-0"		300'-0"		320'-0"		340'-0"					
	BAR	LENGTH	NO.	SIZE	WEIGHT	NO.	SIZE	WEIGHT	NO.	SIZE	WEIGHT	NO.	SIZE	WEIGHT	NO.	SIZE	WEIGHT	NO.	SIZE	WEIGHT	NO.	SIZE	WEIGHT			
q1	57'-8"		7	9	1372	7	9	1372	7	9	1372	6	9	1176	6	10	1489	6	11	1838	6	11	1838	6	11	1838
q2	57'-8"		4	8	616	4	8	616	4	9	784	6	9	1176	6	10	1489	6	10	1489	6	11	1838	6	11	1838
q3	57'-8"		4	8	616	4	8	616	4	8	616	4	9	784	4	9	784	4	10	993	4	10	993	4	10	993
6q4	57'-8"		6	6	520	6	6	520	6	6	520	6	6	520	6	6	520	6	6	520	6	6	520	6	6	520
6q5	55'-4"		2	6	166	2	6	166	2	6	166	2	6	166	2	6	166	2	6	166	2	6	166	2	6	166
6q6	48'-10"		2	6	147	2	6	147	2	6	147	2	6	147	2	6	147	2	6	147	2	6	147	2	6	147
6q7	42'-3"		2	6	127	2	6	127	2	6	127	2	6	127	2	6	127	2	6	127	2	6	127	2	6	127
6q8	35'-8"		2	6	107	2	6	107	2	6	107	2	6	107	2	6	107	2	6	107	2	6	107	2	6	107
8b1	30'-4"		8	8	648	8	8	648	8	8	648	8	8	648	8	8	648	8	8	648	8	8	648	8	8	648
5c1	VARIES		34	5	668	34	5	668	34	5	668	34	5	674	34	5	674	34	5	674	34	5	674	34	5	674
5c2	VARIES		8	5	155	8	5	155	8	5	155	8	5	156	12	5	235	12	5	235	12	5	235	12	5	235
5c3	VARIES		56	5	866	56	5	866	56	5	866	56	5	876	56	5	876	72	5	1126	72	5	1126	92	5	1439
5c4	7'-5"		28	5	217	28	5	217	28	5	217	28	5	217	28	5	217	28	5	217	28	5	217	28	5	217
①	TOTAL (LB.)				6225			6225			6393			6774			7166			7729			8287			8949
	STRUCTURAL CONCRETE (CY)				42.2			42.2			42.2			42.2			42.2			42.2			42.2			42.2

COLUMN

H IN FEET	COLUMN HEIGHT	STRUCTURAL CONCRETE (CY)	REINFORCING STEEL									TOTAL WEIGHT (LB.)			
			d1 BAR			4e1 BAR			4e2 BAR						
			NO.	SIZE	LENGTH	WEIGHT	NO.	SIZE	LENGTH	WEIGHT	NO.	SIZE	LENGTH	WEIGHT	
16	4'-9"	12.1	74	9	7'-6"	1887	10	4	11'-5"	76	35	4	15'-1"	353	2316
17	5'-9"	14.6	74	9	8'-6"	2139	12	4	11'-5"	92	42	4	15'-1"	423	2654
18	6'-9"	17.2	74	9	9'-6"	2390	14	4	11'-5"	107	49	4	15'-1"	494	2991
19	7'-9"	19.7	74	9	10'-6"	2642	16	4	11'-5"	122	56	4	15'-1"	564	3328
20	8'-9"	22.3	74	9	11'-6"	2893	18	4	11'-5"	137	63	4	15'-1"	635	3665
21	9'-9"	24.8	74	9	12'-6"	3145	20	4	11'-5"	153	70	4	15'-1"	705	4003
22	10'-9"	27.3	74	9	13'-6"	3397	22	4	11'-5"	168	77	4	15'-1"	776	4341
23	11'-9"	29.9	74	9	14'-6"	3648	24	4	11'-5"	183	84	4	15'-1"	846	4677
24	12'-9"	32.4	74	9	15'-6"	3900	26	4	11'-5"	198	91	4	15'-1"	917	5015
25	13'-9"	35.0	74	9	16'-6"	4151	28	4	11'-5"	214	98	4	15'-1"	987	5352
26	14'-9"	37.5	74	9	17'-6"	4403	30	4	11'-5"	229	105	4	15'-1"	1058	5690
27	15'-9"	40.1	74	9	18'-6"	4655	32	4	11'-5"	244	112	4	15'-1"	1128	6027
28	16'-9"	42.6	74	9	19'-6"	4906	34	4	11'-5"	259	119	4	15'-1"	1199	6364
29	17'-9"	45.1	74	9	20'-6"	5158	36	4	11'-5"	275	126	4	15'-1"	1270	6703
30	18'-9"	47.7	74	9	21'-6"	5409	38	4	11'-5"	290	133	4	15'-1"	1340	7039
31	19'-9"	50.2	74	9	22'-6"	5661	40	4	11'-5"	305	140	4	15'-1"	1411	7377
32	20'-9"	52.8	74	9	23'-6"	5913	42	4	11'-5"	320	147	4	15'-1"	1481	7714
33	21'-9"	55.3	74	9	24'-6"	6164	44	4	11'-5"	336	154	4	15'-1"	1552	8052
34	22'-9"	57.9	74	9	25'-6"	6416	46	4	11'-5"	351	161	4	15'-1"	1622	8389
35	23'-9"	60.4	74	9	26'-6"	6667	48	4	11'-5"	366	168	4	15'-1"	1693	8726
36	24'-9"	62.9	74	9	27'-6"	6919	50	4	11'-5"	381	175	4	15'-1"	1763	9063
37	25'-9"	65.5	74	9	28'-6"	7171	52	4	11'-5"	397	182	4	15'-1"	1834	9402
38	26'-9"	68.0	74	9	29'-6"	7422	54	4	11'-5"	412	189	4	15'-1"	1904	9738
39	27'-9"	70.6	74	9	30'-6"	7674	56	4	11'-5"	427	196	4	15'-1"	1975	10,076
40	28'-9"	73.1	74	9	31'-6"	7925	58	4	11'-5"	442	203	4	15'-1"	2045	10,412



NOTE: THE REINFORCING STEEL QUANTITY IS TO BE INCLUDED ON THE SUMMARY QUANTITIES SHEET IN THE PLAN.

NOTE: THE CONCRETE QUANTITY IS TO BE INCLUDED ON THE SUMMARY QUANTITIES SHEET IN THE PLAN.

NOTE: THE PILE TYPE IS TO BE INCLUDED ON THE SUMMARY QUANTITIES SHEET IN THE PLAN.

PIER NOTES:

SEE "TEE PIER NOTES" ON RS40-003-14 FOR NOTES REGARDING APPLICATION OF THESE PIER STANDARDS.

MINIMUM CLEAR DISTANCE FROM FACE OF CONCRETE TO NEAR REINFORCING BAR SHALL BE 2 INCHES UNLESS OTHERWISE NOTED OR SHOWN.

① SEE SHEET RS40-169-14 FOR STEP REINFORCING STEEL QUANTITIES AND DETAILS.

LATEST REVISION DATE	APPROVED BY BRIDGE ENGINEER	IOWADOT Highway Division	
		STANDARD DESIGN - 40' ROADWAY, 3 SPAN BRIDGES	
		ROLLED STEEL BEAM BRIDGES	
		OCTOBER, 2014	
		TEE PIER CAP & COLUMN DETAILS 45° SKEW	RS40-157-14