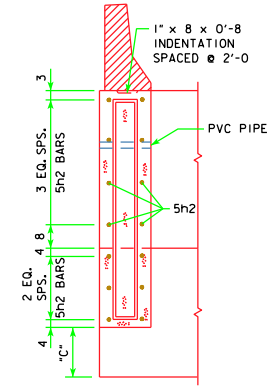
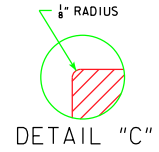


PART LONGITUDINAL SECTION NEAR GUTTER

PART END VIEW AT ABUTMENT

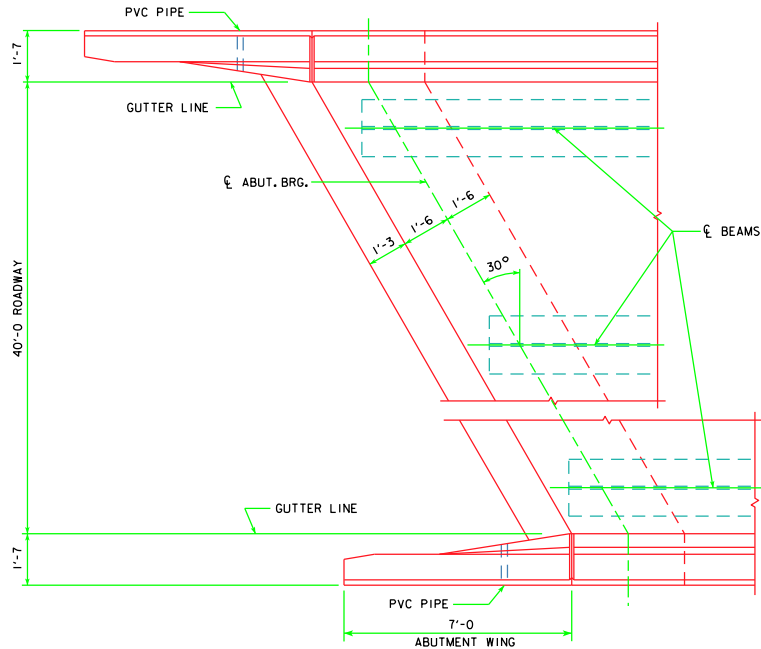


SECTION A-A

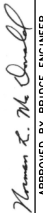



NOTE:
PLUG 3" PVC PIPE WITH EXPANDING
FOAM PRIOR TO BACKFILLING BEHIND
ABUTMENTS.

NOTE:
FOR ELEVATION A, ELEVATION B AND
DIMENSION C SEE "MISCELLANEOUS DETAILS"
FOR THE APPROPRIATE LENGTH BRIDGE.



PART PLAN
(STEEL DIAPHRAGMS NOT SHOWN)

LATEST REVISION DATE	 APPROVED BY BRIDGE ENGINEER	 Iowa Department of Transportation Highway Division	
		STANDARD DESIGN - 40' ROADWAY, 3 SPAN BRIDGES ROLLED STEEL BEAM BRIDGES JUNE, 2010	
		LONGITUDINAL SECTION 30° SKEW	RS40-025-10