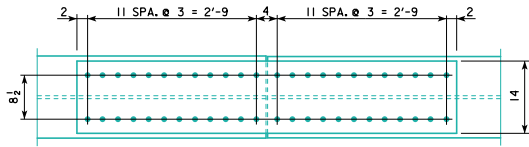
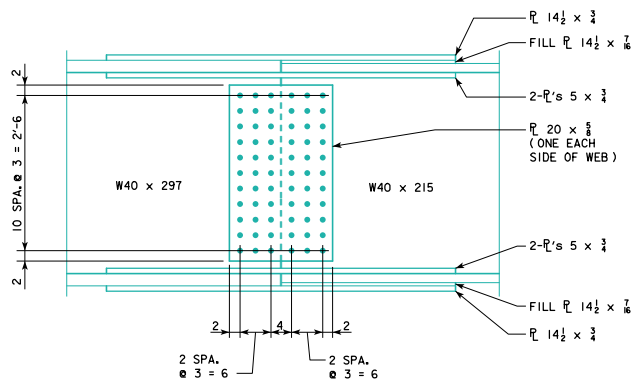


TOP AND BOTTOM FLANGE



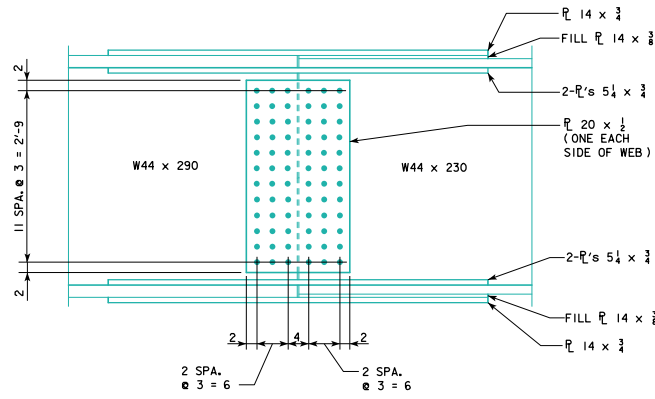
TOP AND BOTTOM FLANGE



BOLTED SPLICE DETAILS

320' BEAM SPLICE

NOTE: ALL BOLTS 3/4"Ø



BOLTED SPLICE DETAILS

340' BEAM SPLICE

NOTE: ALL BOLTS 3/4"Ø

LATEST REVISION DATE	 APPROVED BY BRIDGE ENGINEER		
		STANDARD DESIGN - 40' ROADWAY, 3 SPAN BRIDGES ROLLED STEEL BEAM BRIDGES JUNE, 2010	
		BOLTED FIELD SPLICE DETAILS SHEET 3	RS40-086-10