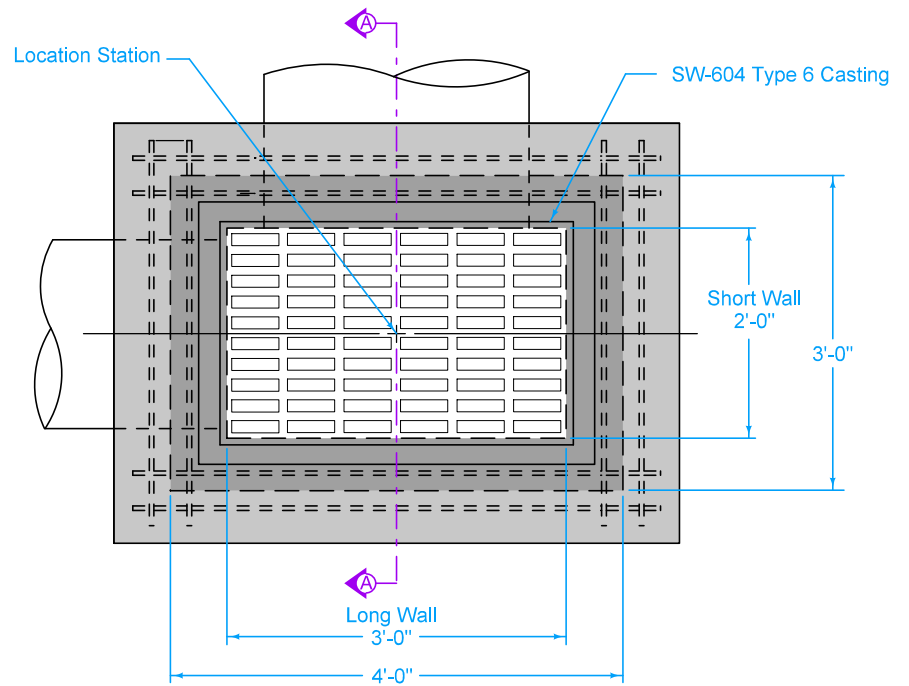


SECTION A-A

- ① Install four #4 diagonal bars at all pipe openings.
- ② Cast-in-place base shown. If base is precast integral with walls, the footprint of the base is not required to extend beyond the outer edge of the walls.
- ③ 12 inch minimum wall height above all pipes.



PLAN

MAXIMUM PIPE DIAMETERS		
Pipe Location	Precast Structure	Cast-in-place Structure
Short Wall	15"	18"
Long Wall	24"	30"

SUDAS	IOWADOT	REVISION
		1 04-17-18
FIGURE 6010.511	STANDARD ROAD PLAN	SW-511
SHEET 1 of 1		
<small>REVISIONS: Changed 'invert' callout to 'Concrete Fillet'. Updated the work and Iowa DOT and SUDAS logo.</small>		
<i>Paul D. Wigand</i> <small>SUDAS DIRECTOR</small>		<i>Brian Smith</i> <small>DESIGN METHODS ENGINEER</small>
RECTANGULAR AREA INTAKE		

FIGURE 6010.511 SHEET 1 OF 1