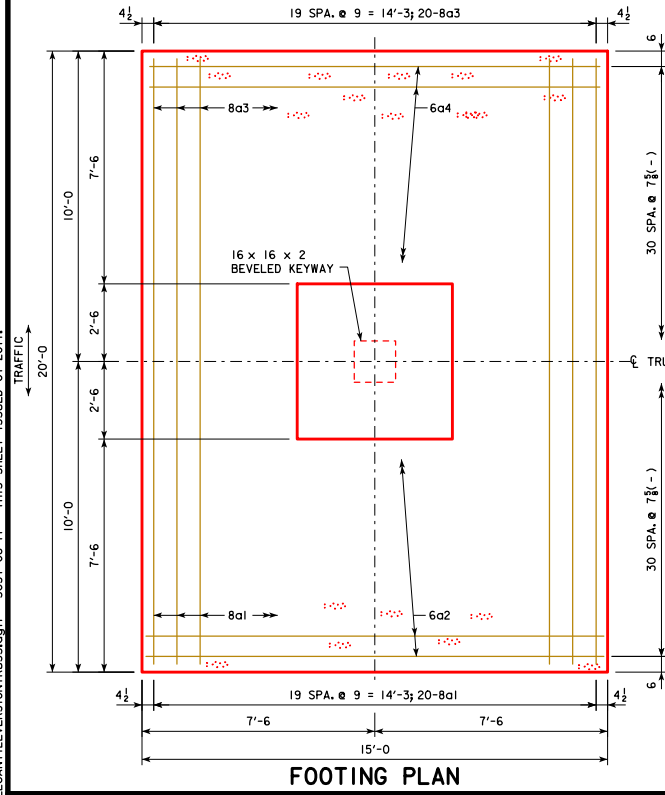
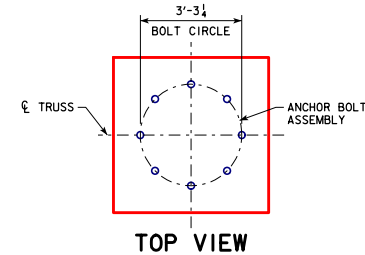


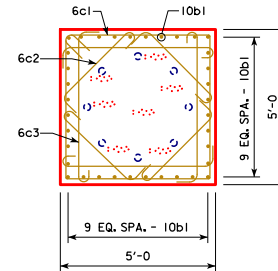
ELEVATION



FOOTING PLAN



TOP VIEW

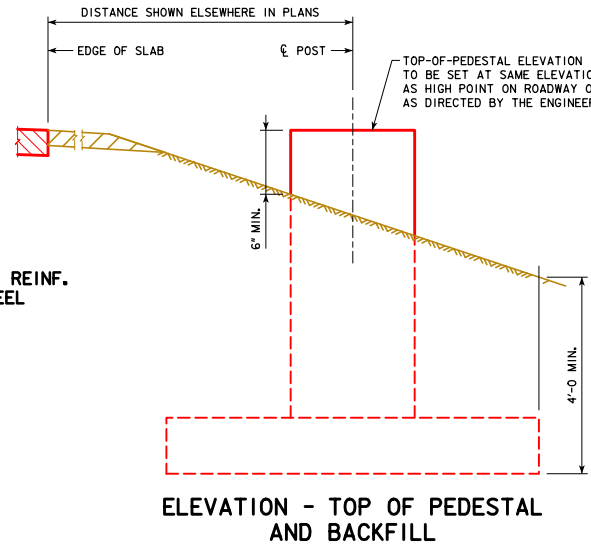


SECTION M-M

4-6c3 BARS ARE TO BE PLACED WITH EVERY LAYER OF 6c1 BARS IN THE TOP 6'-3 OF THE PEDESTAL.

TOP REINF. STEEL

BOTTOM REINF. STEEL

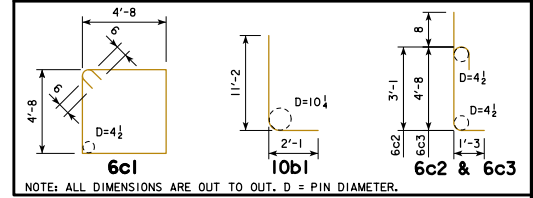


ELEVATION - TOP OF PEDESTAL AND BACKFILL

EPOXY COATED REINFORCING BAR LIST

BAR	LOCATION	SHAPE	NO.	LENGTH	WEIGHT
8a1	FOOTING BOT., LONGIT.		20	19'-8	1050
8a2	FOOTING BOT., TRANSV.		31	14'-8	683
8a3	FOOTING TOP, LONGIT.		20	19'-8	1050
8a4	FOOTING TOP, TRANSV.		31	14'-8	683
10b1	FOOTING TO PEDESTAL DOWEL		36	13'-3	2053
6c1	PEDESTAL TIES		10	19'-8	295
6c2	PEDESTAL TIES		40	5'-0	300
6c3	PEDESTAL TIES		28	6'-7	277
EPOXY COATED REINFORCING STEEL - TOTAL (LBS.)					6391

BENT BAR DETAILS



NOTE: ALL DIMENSIONS ARE OUT TO OUT. D = PIN DIAMETER.

CONCRETE PLACEMENT QUANTITIES

PEDESTAL	8.8
FOOTING	25.0
TOTAL - CU. YDS.	33.8

GENERAL NOTES:

STRUCTURAL CONCRETE, CLASS C, SHALL BE USED FOR THE FOUNDATION.

ALL EXPOSED CORNERS 90° OR SHARPER SHALL BE FILLETED WITH A 3/4" DRESSED AND BEVELED STRIP.

EXCAVATION FOR THE FOUNDATION SHALL BE TO NEAT LINES AND CONCRETE SHALL BE PLACED AGAINST THE UNDISTURBED MATERIAL. ALL EXCAVATION FOR THE FOUNDATION SHALL BE DISPOSED IN THE AREA ADJACENT TO THE FOUNDATION AND SHAPED TO NORMAL GROUND CONTOUR, UNLESS OTHERWISE DIRECTED BY THE ENGINEER.



ONE ANCHOR BOLT ASSEMBLY INCLUDING ANCHOR PLATE, TEMPLATE, NUTS (5 PER BOLT) AND WASHERS (2 PER BOLT) ARE REQUIRED PER FOUNDATION.

ALL ANCHOR BOLT MATERIALS AND GALVANIZING SHALL BE IN ACCORDANCE WITH THE REQUIREMENTS OF ARTICLE 4187.01, C, 3 OF THE STANDARD SPECIFICATIONS.

PRICE BID FOR CONTRACT ITEMS SHALL INCLUDE ALL LABOR AND MATERIALS NECESSARY TO CONSTRUCT CANTILEVER SIGN TRUSS FOUNDATION AS DETAILED HEREON. THE COST OF FURNISHING AND INSTALLING ANCHOR BOLT ASSEMBLY AND RODENT GUARD IS TO BE INCLUDED IN THE UNIT PRICE BID FOR STRUCTURAL CONCRETE. CONTRACT ITEMS FOR CANTILEVER SIGN TRUSS FOUNDATION CONSTRUCTION ARE:

REINFORCING STEEL, EPOXY COATED - POUNDS
STRUCTURAL CONCRETE (MISCELLANEOUS) - CUBIC YARDS
EXCAVATION - CUBIC YARDS OF CLASS SPECIFIED

THE FOUNDATION DETAILS SHOWN ARE BASED ON A NET ALLOWABLE SOIL BEARING PRESSURE (FOR SETTLEMENT) OF 1.0 TON/FT².

03-2018 LATEST REVISION DATE	 APPROVED BY BRIDGE ENGINEER	 IOWA DOT Highway Division	
		STANDARD DESIGN	
		STEEL CANTILEVER SIGN TRUSS	
		JULY, 2017	
		FOUNDATION DETAILS - SPREAD FOOTING	SCST-08-17