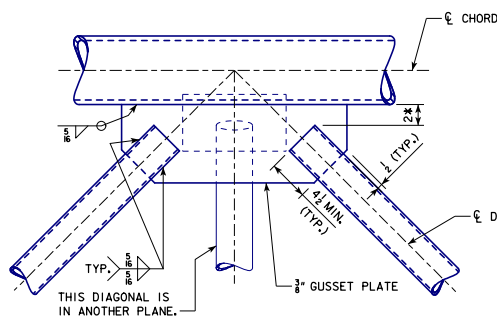
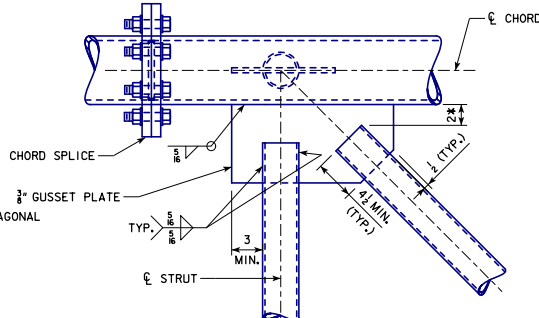


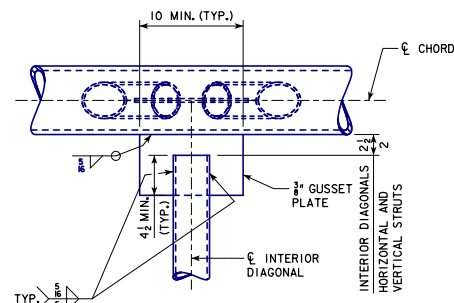
REVISIONS 07-17 - MODIFIED NOTES, CHANGED DETAIL C TO SHOW A 2 1/2" SPACING BETWEEN CHORD AND END OF ALL INTERIOR DIAGONALS, CHANGED DETAIL D TO SHOW A UNIQUE GUSSET CONNECTION WHERE DIAGONALS AND A STRUT JOIN A SUPPORT POST, CHANGED DETAIL E GUSSET PLATE CONNECTION BY INCREASING DIAGONAL-TO-POST GUSSET THICKNESS FROM 3/4" TO 5/8", EXPLICITLY DIMENSIONING GUSSET LENGTH AS 1'-3" AND EXPLICITLY DIMENSIONING VERTICAL GAP BETWEEN TOP OF GUSSET AND BOTTOM OF W10 X 45 BEAM AS 1".
STEELOVERHEADS/INTRUSS.DGN - SOST-08-11 - THIS SHEET ISSUED 09-11.



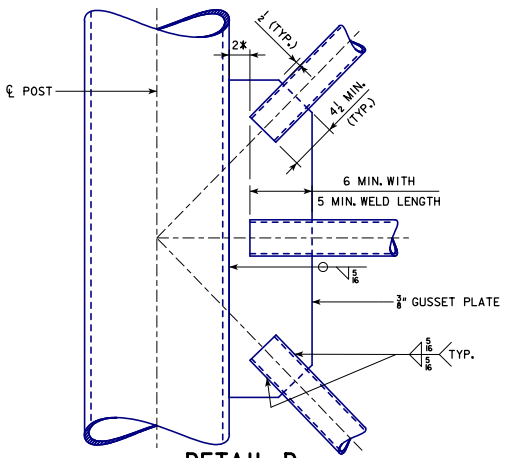
DETAIL A



DETAIL B



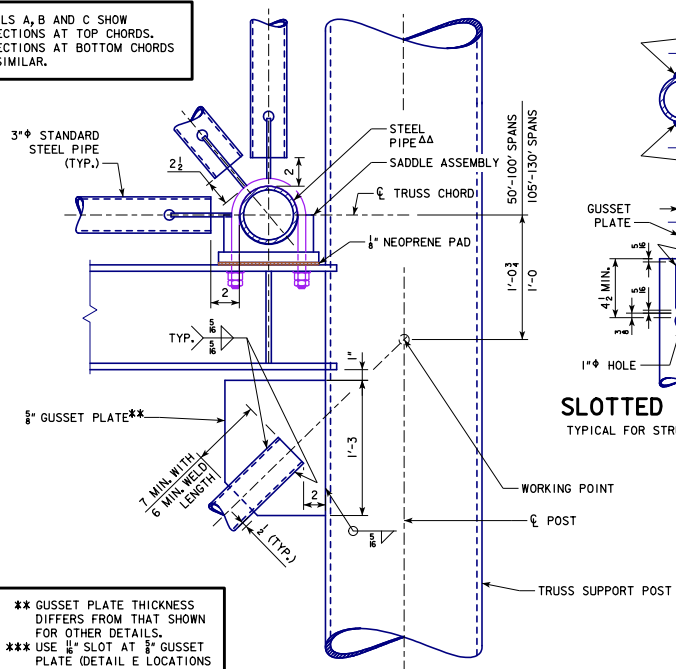
DETAIL C



DETAIL D

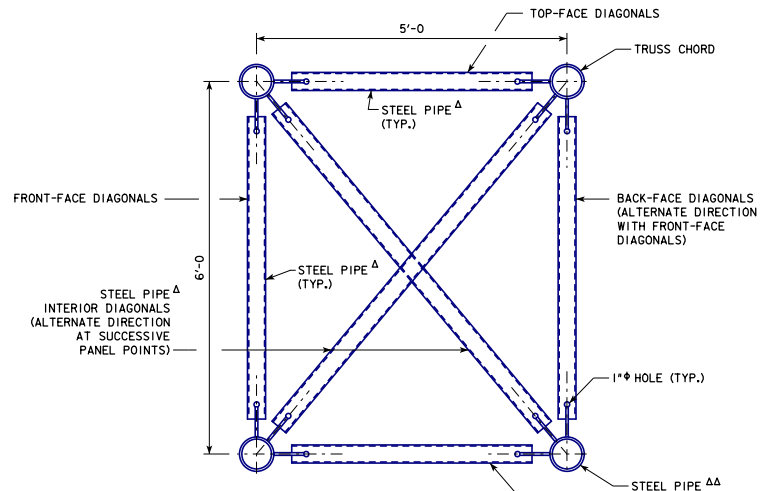
* THIS DIMENSION MAY BE REDUCED BY 3/8".

DETAILS A, B AND C SHOW CONNECTIONS AT TOP CHORDS. CONNECTIONS AT BOTTOM CHORDS ARE SIMILAR.

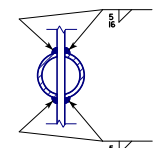


DETAIL E

** GUSSET PLATE THICKNESS DIFFERS FROM THAT SHOWN FOR OTHER DETAILS.
*** USE 1/4" SLOT AT 5/8" GUSSET PLATE (DETAIL E LOCATIONS ONLY).



SECTION A-A



SLOTTED PIPE ENDS
TYPICAL FOR STRUTS AND DIAGONALS

TRUSS PIPE DETAILS		
SPAN	Δ TRUSS DIAGONALS	ΔΔ TRUSS CHORDS
50'-100'	3" Δ STANDARD STEEL PIPE	5" Δ EXTRA-STRONG STEEL PIPE
105'-130'	3" Δ EXTRA-STRONG STEEL PIPE	6" Δ EXTRA-STRONG STEEL PIPE

SEE STANDARD SHEETS SOST-02-11, SOST-03-11, SOST-04-11 AND SOST-05-11 FOR LOCATIONS OF SECTION A-A; DETAILS A, B AND C; AND DETAIL SIMILAR TO DETAIL A.
SEE STANDARD SHEETS SOST-06-11 AND SOST-07-11 FOR LOCATIONS OF DETAILS THAT ARE SIMILAR TO DETAILS B AND C AND LOCATIONS OF DETAILS D AND E.

LATEST REVISION DATE 07-17 <i>Thomas E. McQuinn</i> APPROVED BY BRIDGE ENGINEER	IOWADOT Highway Division	
	STANDARD DESIGN	
	STEEL OVERHEAD SIGN TRUSS	
	SEPTEMBER, 2011	
	GUSSET PLATE CONNECTIONS 50'-130' SPANS	SOST-08-11