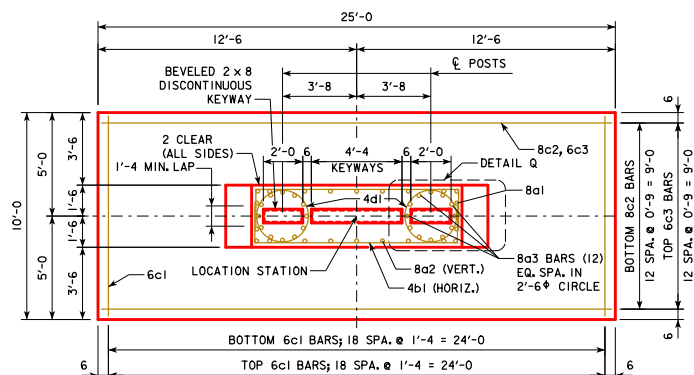
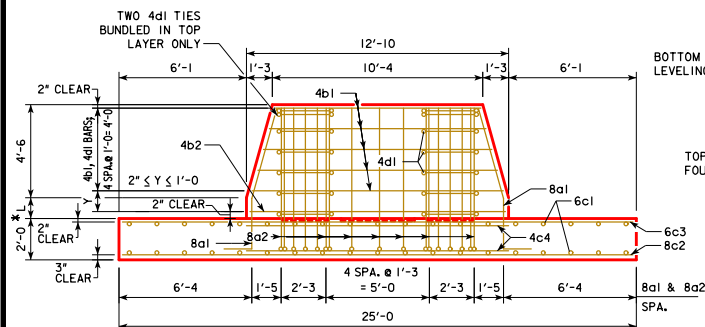


REVISION 07-17 - MODIFIED NOTES. NOTE: "FOUNDATION DETAILS SHOWN".....NET ALLOWABLE SOIL BEARING PRESSURE (FOR SETTLEMENT) WAS "MAXIMUM DESIGN (BEARING CAPACITY)" COLUMN IN "REINFORCING BAR LIST" TITLED "BAR" WAS TITLED "SIZE". ANCHOR BOLT MAT'L NOTE ARTICLE 4187.01, C, 3 OF THE STANDARD SPECIFICATIONS WAS "REQUIREMENTS OF I.D.O.T. MAT'L (M. 453.08). STEEL OVERHEAD SIGN TRUSS - SOST-17-11 - THIS SHEET ISSUED 09-11.

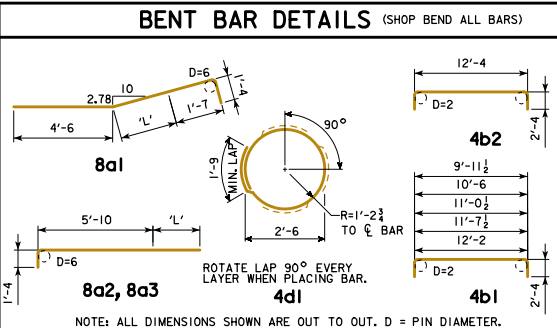


PLAN
ANCHOR BOLT ASSEMBLIES NOT SHOWN



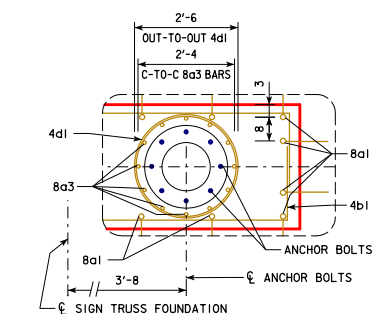
SIDE ELEVATION
ANCHOR BOLT ASSEMBLIES NOT SHOWN

* L SHALL NOT EXCEED 6'-0"

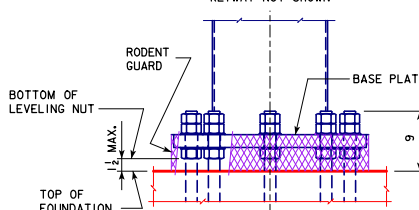


- (A) ADDITIONAL LENGTH TO BARS 8a1, 8a2, AND 8a3 FOR L > 0.
- (B) TWO IN EACH 1'-0" OF L.
- (C) MAINTAIN UNIFORM 1'-0" SPACING FOR ALL VALUES OF L, WITH REMAINDER SPACING AT BOTTOM OF STEM WALL 2" SY 1'-0".
- ** BUNDLE TWO 4d1 CIRCULAR TIES IN TOP LAYER.

| REINFORCING BAR LIST - EPOXY COATED ONE FOUNDATION | | | | | | | | | |
|---|-------|---------------------------|--------|--------|------------|-----------------|-----------|--------|--|
| BAR | SHAPE | TABULATED VALUE FOR L = 0 | | | | EACH 1'-0" OF L | | | |
| | | NO. | LENGTH | WEIGHT | SPACING | NO. | LENGTH | WEIGHT | |
| 8a1 | | 8 | 7'-5" | 158 | SEE DETAIL | 8 | 1'-0" (A) | 21 | |
| 8a2 | | 14 | 7'-2" | 268 | SEE DETAIL | 14 | 1'-0" (A) | 37 | |
| 8a3 | | 24 | 7'-2" | 459 | SEE DETAIL | 24 | 1'-0" (A) | 64 | |
| 4b1 | | 10 | Varies | 105 | 1'-0" (C) | --- | --- | --- | |
| 4b2 | | --- | --- | --- | --- | 2 (B) | 17'-0" | 23 | |
| 6c1 | | 38 | 9'-6" | 542 | 1'-4" | --- | --- | --- | |
| 8c2 | | 13 | 24'-6" | 850 | 0'-9" | --- | --- | --- | |
| 6c3 | | 13 | 24'-6" | 478 | 0'-9" | --- | --- | --- | |
| 4c4 | | 4 | 12'-8" | 34 | SEE DETAIL | --- | --- | --- | |
| 4d1 | | 12** | 9'-6" | 76 | 1'-0" (C) | 2 (B) | 9'-6" | 13 | |
| TOTAL 2970 LBS. | | | | | | TOTAL 158 LBS. | | | |



DETAIL Q
ANCHOR BOLT AND ANCHOR REINFORCING
PLACEMENT
KEYWAY NOT SHOWN

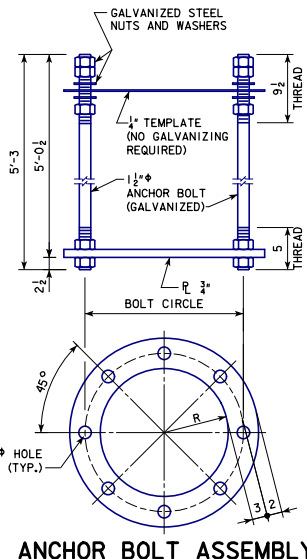


POST BASE DETAIL
SHOWING THE RODENT GUARD

THE RODENT GUARD SHALL BE PLACED AROUND THE BASE PLATE.

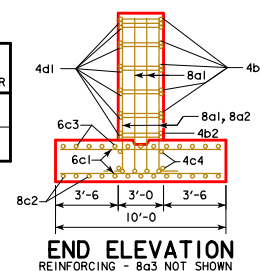
THE RODENT GUARD IS STAINLESS STEEL STANDARD GRADE WIRE CLOTH, 1" MAXIMUM OPENING WITH A MINIMUM WIRE DIAMETER OF AWG NO. 16 WITH A MINIMUM 2" LAP.

SECURE WIRE CLOTH TO BASE PLATE AFTER ERECTION WITH 3" STAINLESS STEEL BANDING. THE RODENT GUARD SHALL NOT EXTEND ABOVE THE TOP OF THE BASE PLATE.

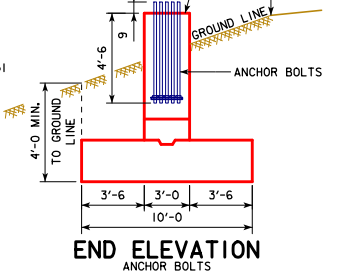


ANCHOR BOLT ASSEMBLY

| | R | BOLT CIRCLE DIAMETER |
|---------------------------------------|---|----------------------------|
| FOR 14" PH POSTS (50'-100' SPANS) | 7 | 1'-8" |
| FOR 16" PH POSTS (105'-130' SPANS) | 8 | 1'-10" |



END ELEVATION
REINFORCING - 8a3 NOT SHOWN



END ELEVATION
ANCHOR BOLTS

GENERAL NOTES:

STRUCTURAL CONCRETE, CLASS C, SHALL BE USED FOR THE FOUNDATION.

EXCAVATION FOR THE FOUNDATION SHALL BE TO NEAT LINES AND CONCRETE SHALL BE PLACED AGAINST THE UNDISTURBED MATERIAL. ALL EXCAVATION FOR THE FOUNDATION SHALL BE DISPOSED IN THE AREA ADJACENT TO THE FOUNDATION AND SHAPED TO NORMAL GROUND CONTOUR, UNLESS OTHERWISE DIRECTED BY THE ENGINEER. THE FOUNDATION DETAILS SHOWN ARE BASED ON A NET ALLOWABLE SOIL BEARING PRESSURE (FOR SETTLEMENT) OF 1.0 TON / FT². (FOUNDATION DESIGN IS BASED ON A MAXIMUM SOIL SURCHARGE DEPTH OF 6'-0").

TWO ANCHOR BOLT ASSEMBLIES INCLUDING ANCHOR PLATES, TEMPLATES, NUTS (5 PER BOLT) AND WASHERS (2 PER BOLT) ARE REQUIRED PER FOUNDATION.

ALL ANCHOR BOLT MATERIALS AND GALVANIZING SHALL BE IN ACCORDANCE WITH ARTICLE 4187.01, C, 3 OF THE STANDARD SPECIFICATIONS.

PRICE BID FOR CONTRACT ITEMS SHALL INCLUDE ALL LABOR AND MATERIALS NECESSARY TO CONSTRUCT OVERHEAD SIGN TRUSS FOUNDATION AS DETAILED HEREON. THE COST OF FURNISHING AND INSTALLING ANCHOR BOLT ASSEMBLIES, CONDUIT, AND RODENT GUARDS ARE TO BE INCLUDED IN THE UNIT PRICE BID FOR STRUCTURAL CONCRETE. CONTRACT ITEMS FOR OVERHEAD SIGN TRUSS FOUNDATION CONSTRUCTION ARE:
REINFORCING STEEL, EPOXY COATED - POUNDS
STRUCTURAL CONCRETE (MISCELLANEOUS) - CUBIC YARDS
EXCAVATION - CUBIC YARDS OF CLASS SPECIFIED

CONCRETE PLACEMENT QUANTITIES ONE FOUNDATION

| ITEM | L = 0 | EACH 1'-0" OF L |
|--------------|-------|-----------------|
| WALL | 5.71 | 1.41 |
| FOOTING | 18.52 | --- |
| TOTAL (C.Y.) | 24.23 | 1.41 |

TOP-OF-WALL ELEVATION IS TO BE SET AT SAME ELEVATION AS HIGH POINT ON ROADWAY OR AS DIRECTED BY THE ENGINEER.

FOR DMS TRUSSES ONLY

ELECTRICAL CONDUIT IS REQUIRED IN FOUNDATIONS SUPPORTING TRUSSES WITH DYNAMIC MESSAGE SIGNS. SEE STANDARD SHEET SOST-18-11 FOR CONDUIT LOCATION DETAILS.

07-17
LATEST REVISION DATE
Norman E. McQuinn
APPROVED BY BRIDGE ENGINEER

IOWA DOT Highway Division

STANDARD DESIGN

STEEL OVERHEAD SIGN TRUSS

SEPTEMBER, 2011

**NON-STAGED
FOUNDATION DETAILS**
50'-130' SPANS

SOST-17-11