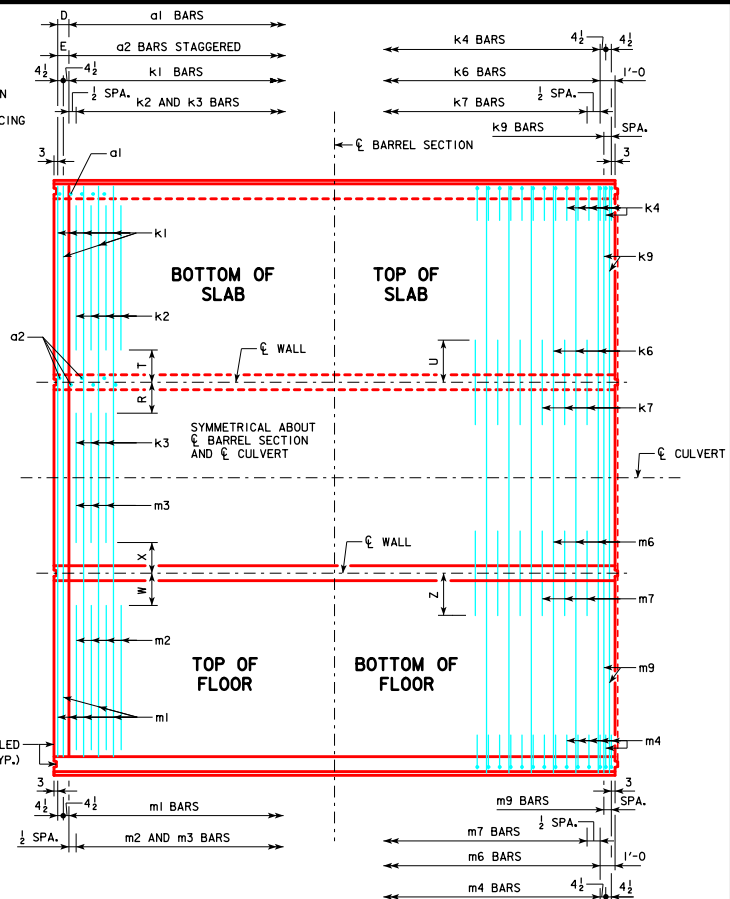
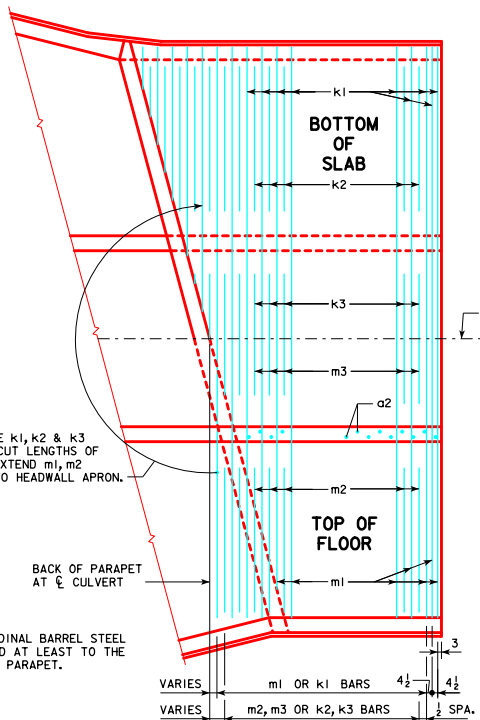
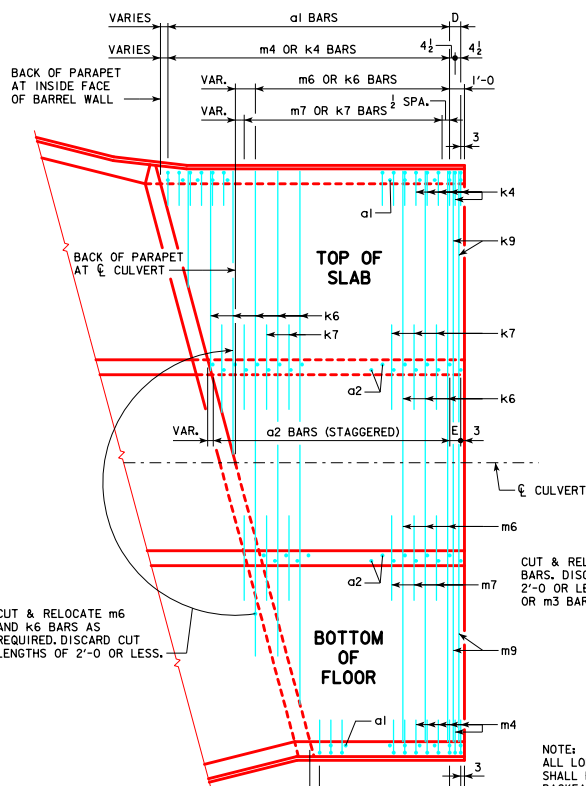


REVISED 07-14 - TRANSITION WALL DETAILS.  
 REVISED 12-2016 - EDITED KEYWAY NOTES IN PLAN VIEWS AND CORRECTED TYPES.  
 ENGLISHDESIGNEDTRIPLECULVERTS.DGN - TRRCB G2-12 - THIS SHEET ISSUED 04-12.

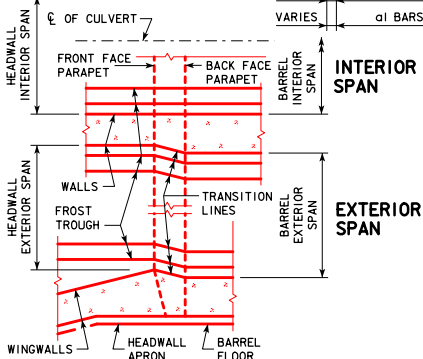


NOTE:  
 TYPICAL FOR LENGTHS OF 38', 35', 32',  
 29' AND 26'. THESE LENGTHS ARE SHOWN  
 AS TYPICAL BECAUSE ALL TRANSVERSE  
 AND VERTICAL REINFORCING STEEL SPACING  
 REPEATS IN 3'-0 INTERVALS.

**END SECTION PLAN VIEWS**  
 (KEYWAYS NOT SHOWN)

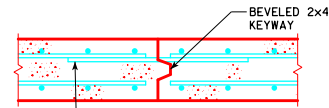
NOTE:  
 END SECTION DETAILS SHOWN ARE FOR A 15° SKEW BARREL.  
 USE FOR SKEWS OF 30° & 45° BY INCREASING THE NUMBER  
 OF TRANSVERSE REINFORCING BARS REQUIRED TO BE CUT  
 AND RELOCATED.

NOTE:  
 DIMENSIONS LISTED ON THIS SHEET TO BE USED IN  
 CONJUNCTION WITH DIMENSIONS AND QUANTITIES FOR  
 BARREL SECTION SHEETS.



**TRANSITION WALL DETAILS**

5r1 BARS - ONE CONST. JT.			
SPAN	NO.	WEIGHT (LB)	
10'-0"	34	124	
12'-0"	40	146	



**TOP SLAB CONSTRUCTION JOINT DETAIL**

**STANDARD SECTION PLAN VIEW**  
 (KEYWAY 15 IS TO BE OMITTED WHEN BELL JOINTS ARE USED)

LATEST REVISION DATE  
 12-2016  
 APPROVED BY BRIDGE ENGINEER  
*Thomas E. McQuill*

**Iowa Department of Transportation**  
 Highway Division  
 STANDARD DESIGN  
**TRIPLE REINFORCED CONCRETE**  
**BOX CULVERTS**  
 APRIL, 2012

**TYPICAL CULVERT**  
**BARREL DETAILS**  
 TRRCB G2-12