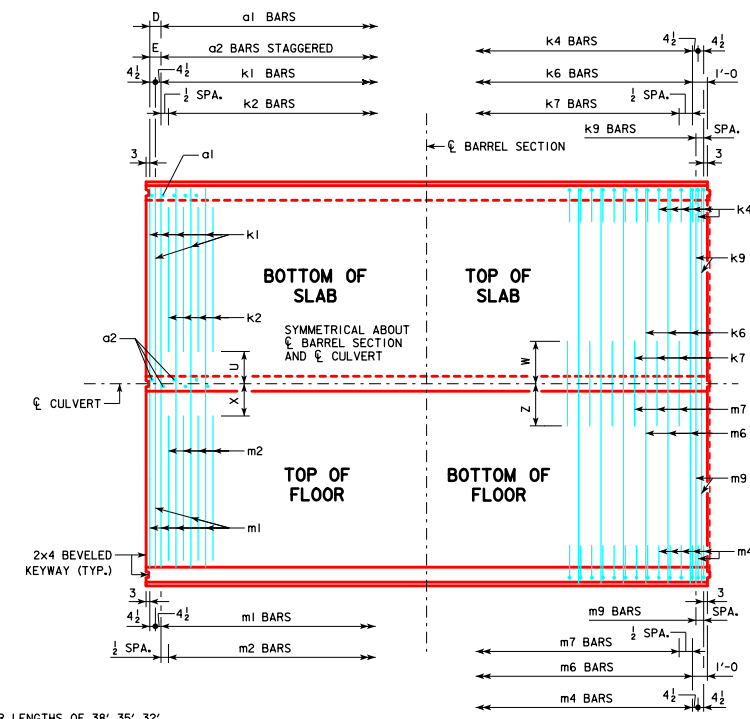
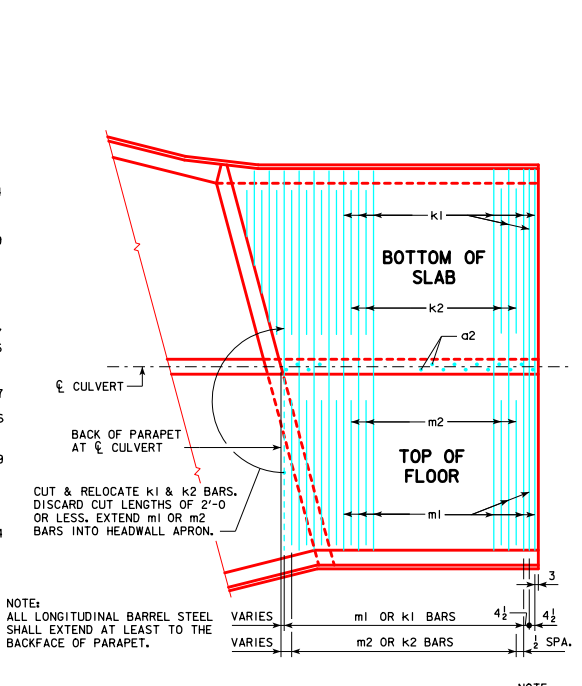
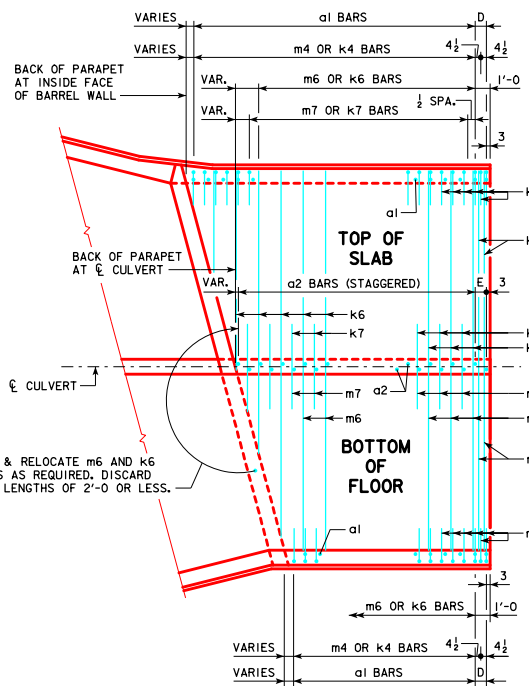


REVISED 07-14 - TRANSITION WALL DETAILS.
 REVISED 12-2016 - EDITED KEYWAY NOTES IN PLAN VIEWS AND CORRECTED TYPOS.
 ENGLISH DESIGNED IN CULVERTS.DGN - TWRCB G2-12 - THIS SHEET ISSUED 04-12.



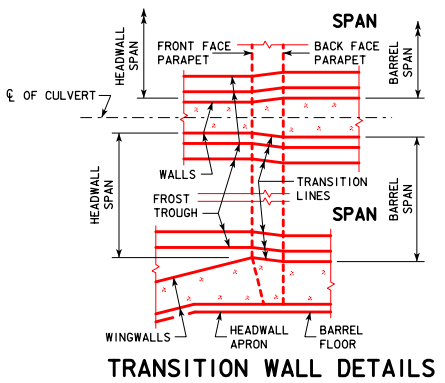
END SECTION PLAN VIEWS
 (KEYWAYS NOT SHOWN)

NOTE:
 ALL LONGITUDINAL BARREL STEEL SHALL EXTEND AT LEAST TO THE BACKFACE OF PARAPET.

NOTE:
 TYPICAL FOR LENGTHS OF 38', 35', 32', 29', AND 26'. THESE LENGTHS ARE SHOWN AS TYPICAL BECAUSE ALL TRANSVERSE AND VERTICAL REINFORCING STEEL SPACING REPEATS IN 3'-0 INTERVALS.

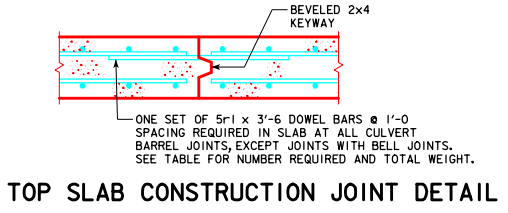
STANDARD SECTION PLAN VIEW
 (KEYWAY IS TO BE OMITTED WHEN BELL JOINTS ARE USED)

NOTE:
 DIMENSIONS LISTED ON THIS SHEET TO BE USED IN CONJUNCTION WITH DIMENSIONS AND QUANTITIES FOR BARREL SECTION SHEETS.



5r1 BARS - ONE CONST. JT.

SPAN	NO.	WEIGHT (LB)
8'-0	18	66
10'-0	22	80
12'-0	26	95



TOP SLAB CONSTRUCTION JOINT DETAIL

LATEST REVISION DATE
 12-2016
 APPROVED BY BRIDGE ENGINEER
Thomas E. McQuinn

Iowa Department of Transportation
 Highway Division
 STANDARD DESIGN
TWIN REINFORCED CONCRETE BOX CULVERTS
 APRIL, 2012

TYPICAL CULVERT BARREL DETAILS | **TWRCB G2-12**