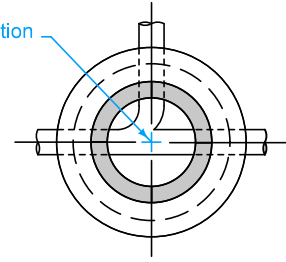


TYPICAL SECTION



- ① Cast-in-place base shown. If base is precast integral with bottom riser, the footprint of the base is not required to extend beyond the outer edge of the riser.
- ② For additional configurations, maintain a minimum of 12 inches of concrete between vertical edges of pipe openings.
- ③ 12 inch minimum riser height above all pipe openings.

Manhole Diameter (inches)	Maximum Pipe Diameter (inches) for 2 Pipes ②	
	At 180° Separation	At 90° Separation
48	24	18
60	36	24
72	42	30
84	48	36
96	60	42

FIGURE 6010.401 SHEET 1 OF 1

SUDAS	IOWADOT	REVISION
		2 04-21-20
FIGURE 6010.401	STANDARD ROAD PLAN	SW-401
		SHEET 1 of 1
REVISIONS: Added Class I Bedding Material and removed steps.		
<i>Paul D. Wigand</i> SUDAS DIRECTOR		<i>Scott Miller</i> DESIGN METHODS ENGINEER
CIRCULAR STORM SEWER MANHOLE		