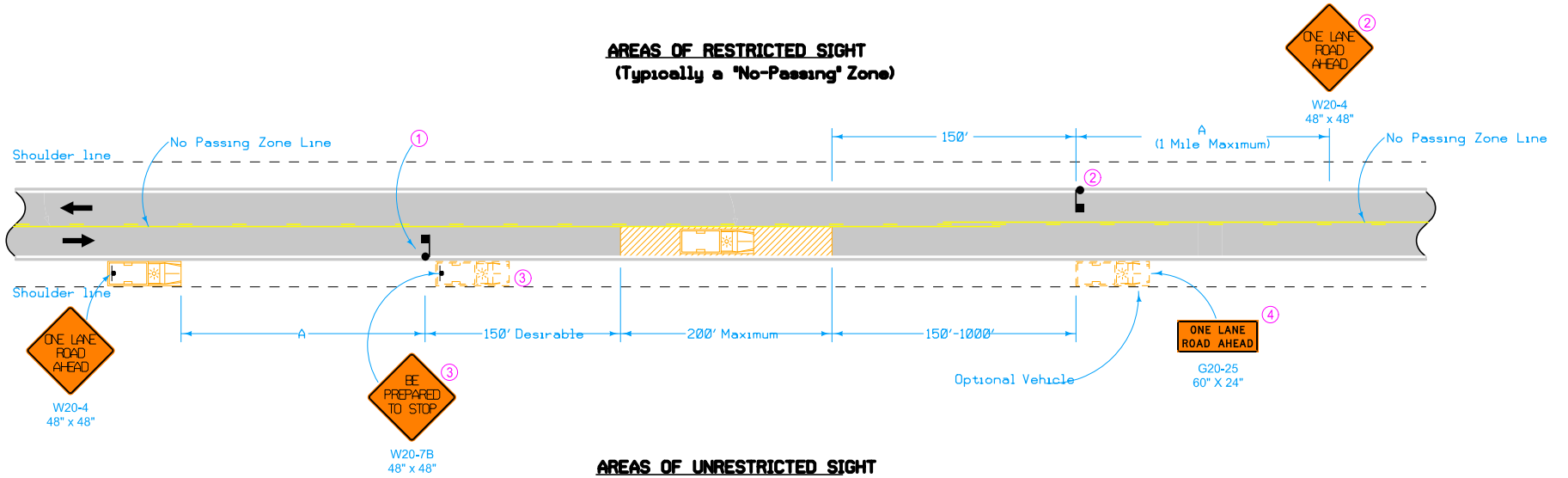
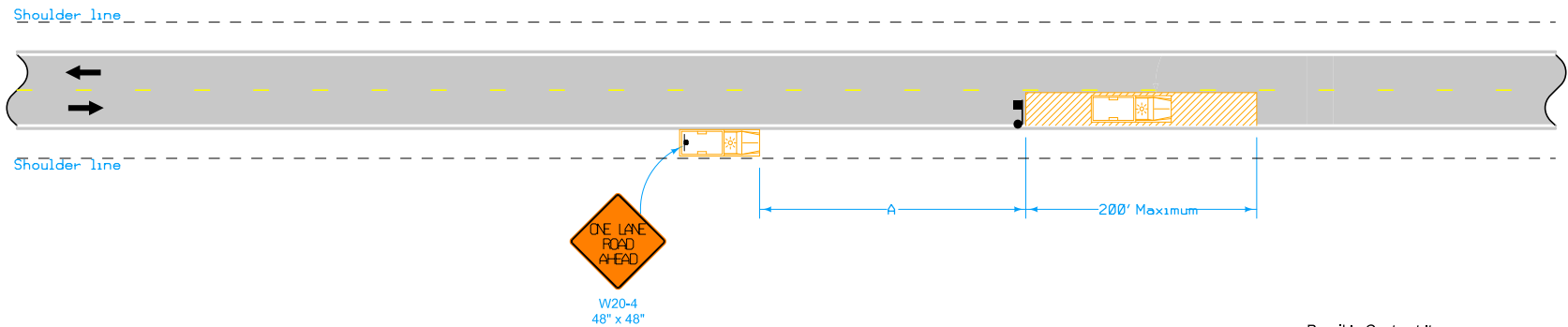


AREAS OF RESTRICTED SIGHT
(Typically a 'No-Passing' Zone)



AREAS OF UNRESTRICTED SIGHT



This layout is intended for use with slow-moving operations or with operations involving stops not to exceed 15 minutes. For stops exceeding 15 minutes or in heavy traffic situations, use [TC-213](#).

Equip all vehicles with an amber revolving light or an amber strobe light.

- ① When a stop is made in an area of restricted sight distance, use a flagger to hold traffic in the closed lane and allow traffic to pass when conditions are safe.
- ② When a stop is made or work proceeds in an area where sight distance is restricted from either direction and is anticipated to be more than 5 minutes, a second flagger and ONE LANE ROAD AHEAD sign is required.
- ③ This vehicle and sign may be used in lieu of a flagger for Falling Weight Deflectometer tests.
- ④ Refer to [SI-881](#) for sign details.

Possible Contract Items:
Flaggers
Traffic Control

LEGEND

- ← Direction of Traffic
- ⚓ Flagger
- ⚓ Traffic Sign
- ▨ Work Area
- 🚚 Work Vehicle

Speed Limit (mph)	A min.
25 or less	200'
30-35	300'
40-45	500'
50 or greater	1000'

	REVISION
	3 10-15-19
STANDARD ROAD PLAN	TC-231
	SHEET 1 of 1
REVISIONS: New logo.	
APPROVED BY DESIGN METHODS ENGINEER	
SLOW MOVING VEHICLE OPERATING IN THE TRAFFIC LANE	