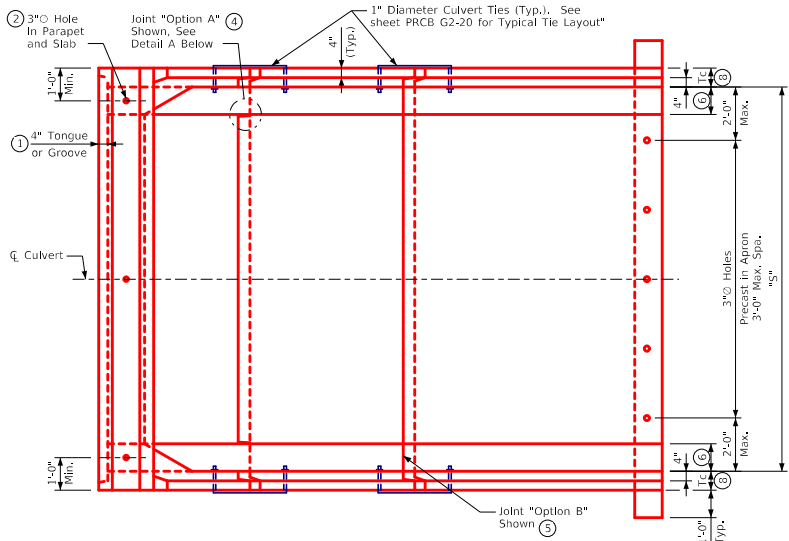
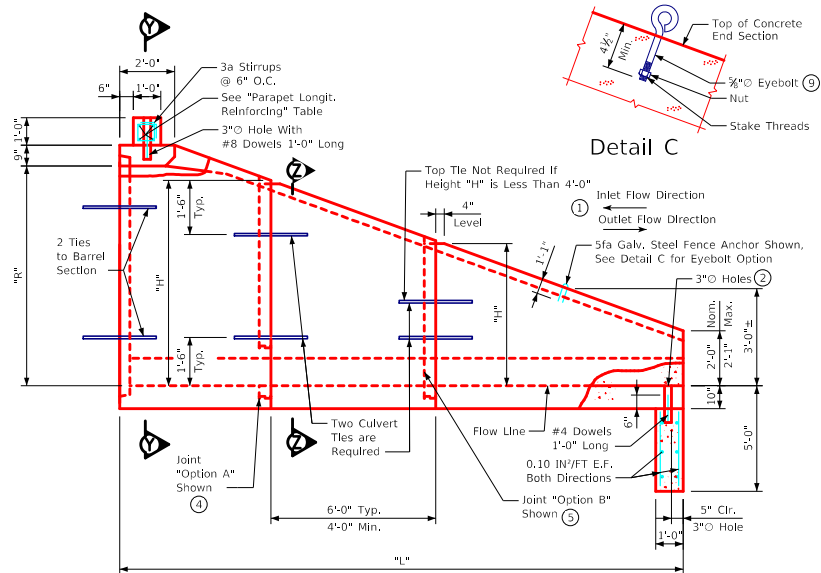


ENGLISHIGNEDPRECASTCULVERTS.DGN - PES 3-20-T1 S1 - THIS SHEET ISSUED 12-2020.

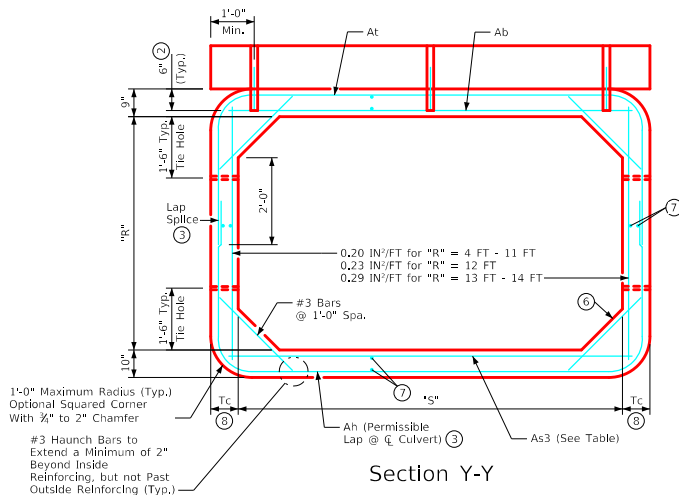


Plan View  
(Reinforcement not Shown)



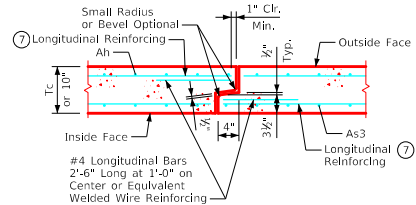
Side Elevation

Note:  
L based on 3:1 foreslope.

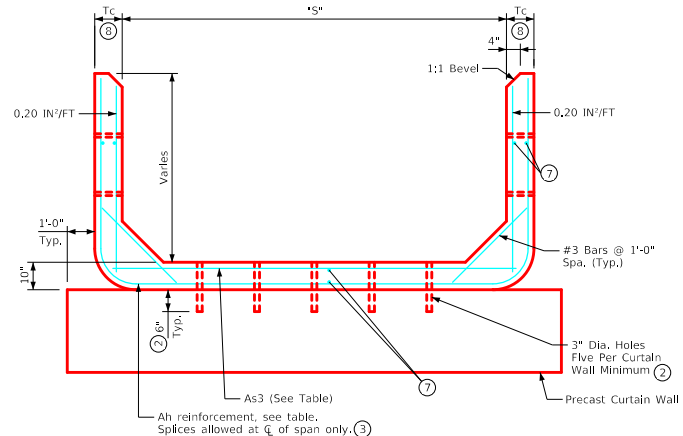


Section Y-Y

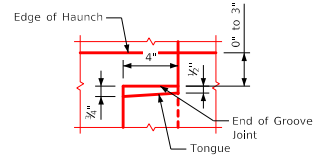
1'-0" Maximum Radius (Typ.)  
Optional Squared Corner  
With 3/4" to 2" Chamfer  
#3 Haunch Bars to  
Extend a Minimum of 2"  
Beyond Inside  
Reinforcing, but not Past  
Outside Reinforcing (Typ.)



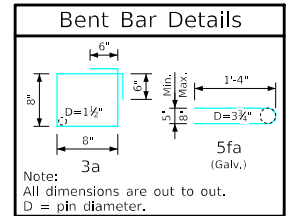
Tongue and Groove Joint Detail



Section Z-Z



Detail A  
(Detail Shown at Floor; Similar at Walls)



Note:  
All dimensions are out to out.  
D = pin diameter.

Note: See sheet PES 4-20-T1 for additional information and notes  
used in conjunction with this sheet.

LATEST REVISION DATE  APPROVED BY BRIDGE ENGINEER 	 Standard Design <b>Single Precast Reinforced Concrete Box Culverts</b> December, 2020	
	<b>Type 1 End Section Details</b> For Skews up to 7.5°; 14' - 16' Spans	<b>PES 3-20-T1</b> Sheet 1 of 2