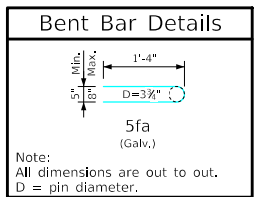
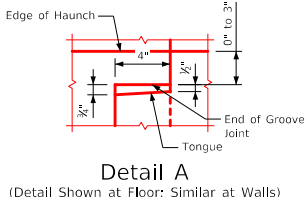
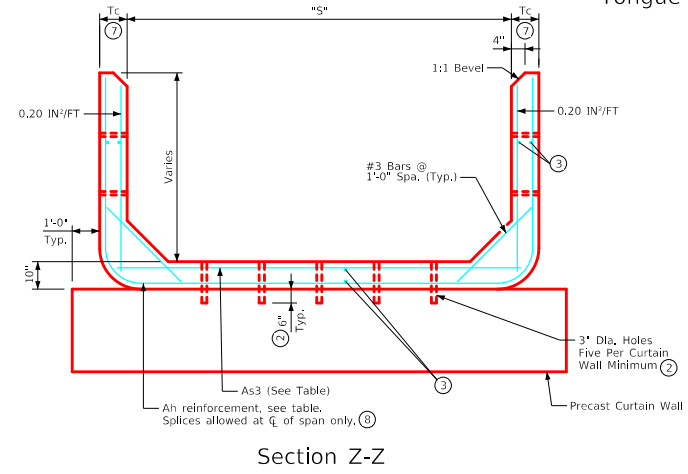
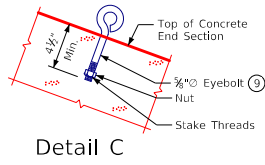
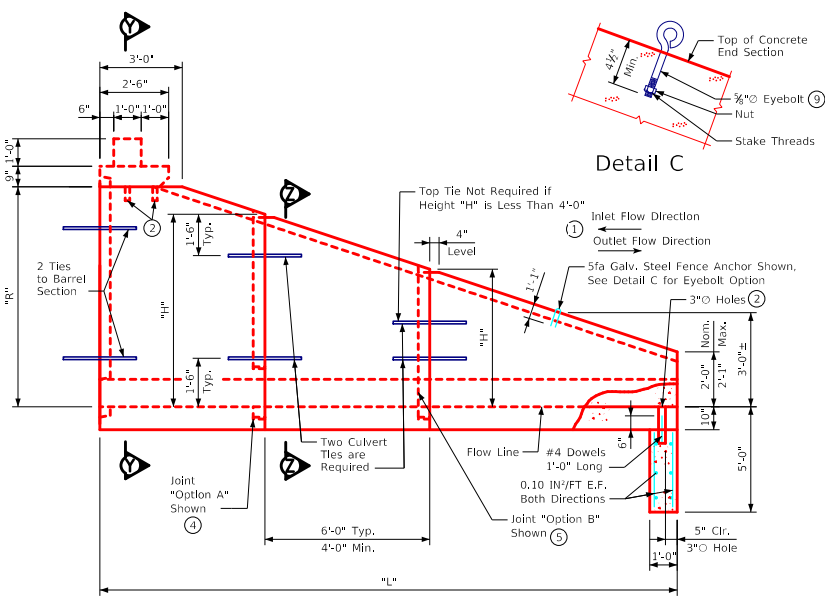
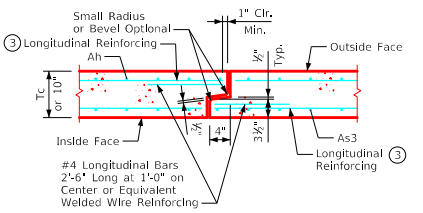
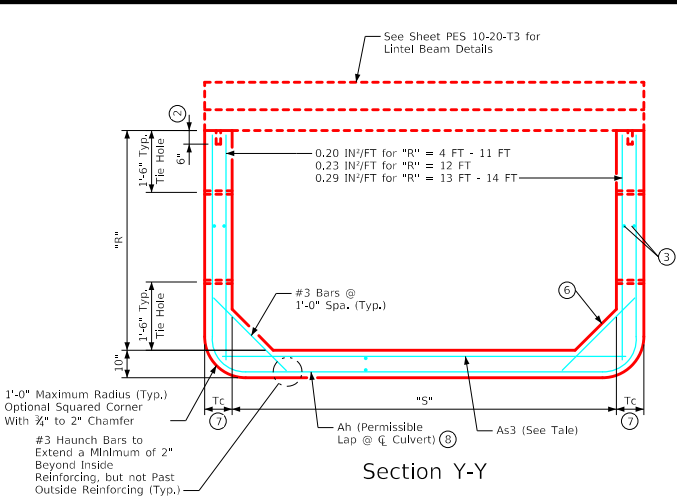
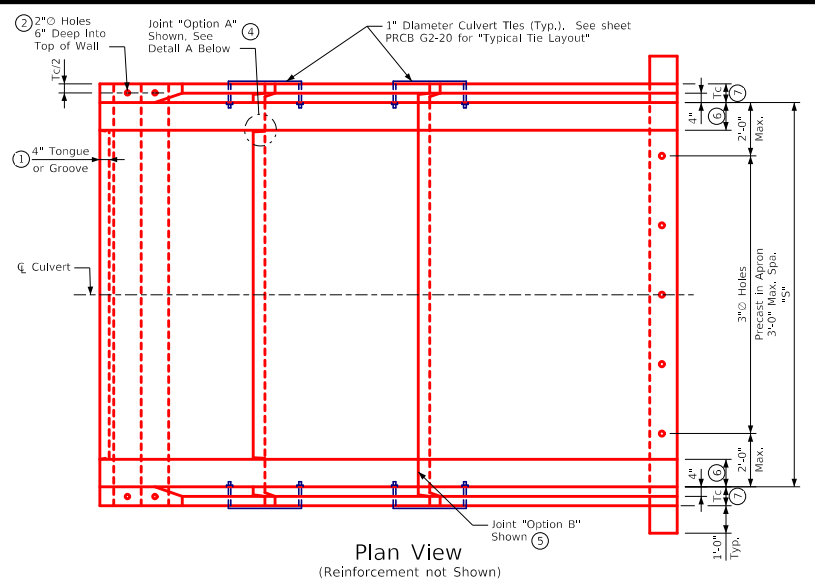


ENGLISHIGNEDPRECASTCULVERTS.DGN - PES 3-20-T3 S1 - THIS SHEET ISSUED 12-2020.



Note: L based on 3:1 foreslope.

Note: See sheet PES 4-20-T3 for additional information and notes used in conjunction with this sheet.

LATEST REVISION DATE APPROVED BY BRIDGE ENGINEER 		
	Standard Design Single Precast Reinforced Concrete Box Culverts December, 2020	
	Type 3 End Section Details For Skews up to 7.5°; 14' - 16' Spans	PES 3-20-T3 Sheet 1 of 2