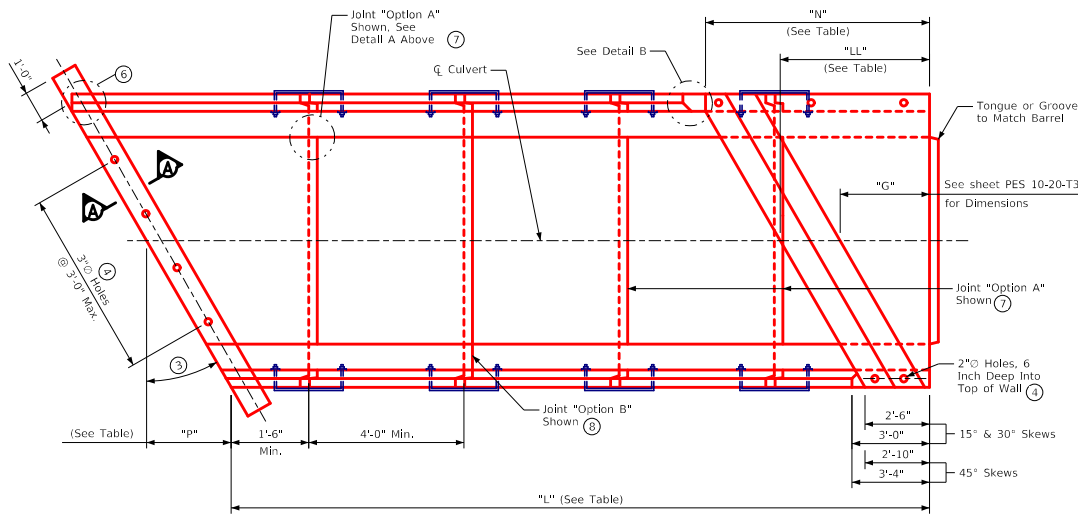
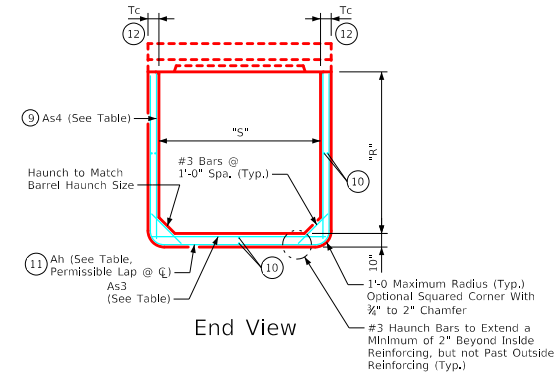


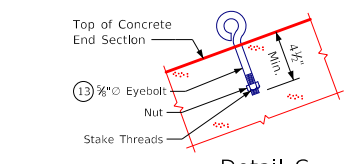
ENGLISHIGNEDPRECASTCULVERTS.DGN - PES 7-20-T3 S1 - THIS SHEET ISSUED 12-2020.



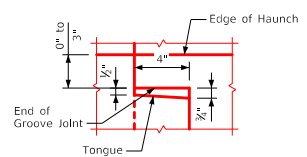
Plan View



End View

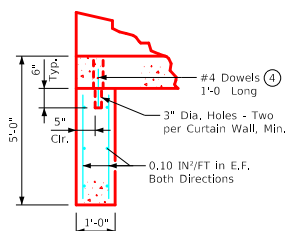


Detail C

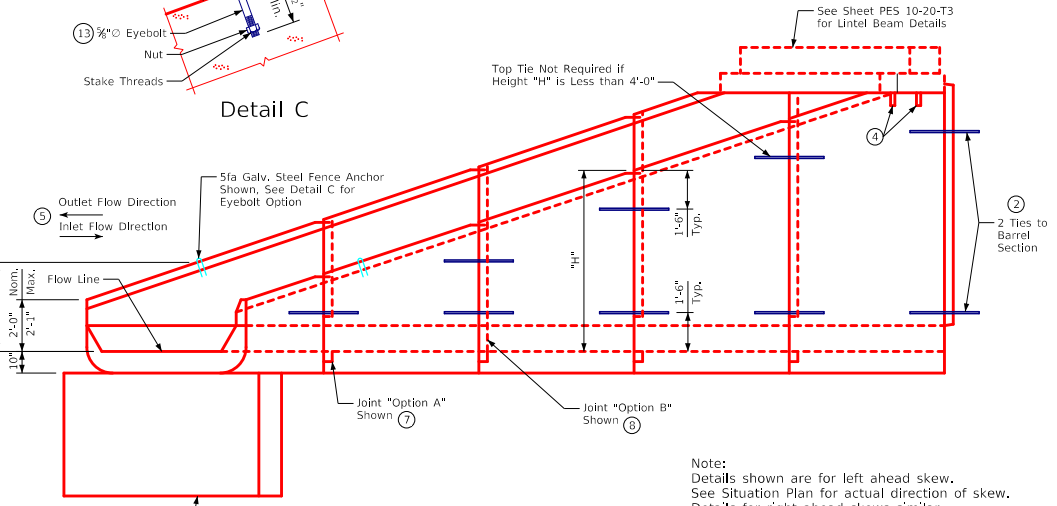


Detail A

(Detail Shown at Floor; Similar at Walls)

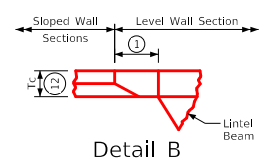


Section A-A

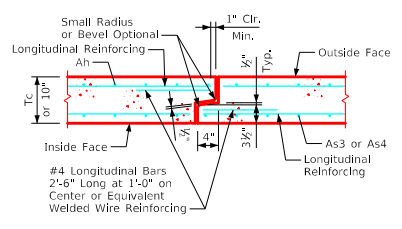


Elevation

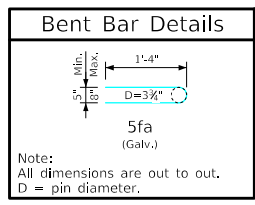
Note:
 Details shown are for left ahead skew.
 See Situation Plan for actual direction of skew.
 Details for right ahead skews similar.
 See sheet PES 8-20-T3 for additional information
 and notes used in conjunction with this sheet.



Detail B



Tongue and Groove Joint Detail



Note:
 All dimensions are out to out.
 D = pin diameter.

LATEST REVISION DATE	APPROVED BY BRIDGE ENGINEER	IOWADOT Highway Division	
		Standard Design Single Precast Reinforced Concrete Box Culverts December, 2020	
		Type 3 End Section Details	PES 7-20-T3

For Skews of 7.5° to 45°; 14'-16' Spans Sheet 1 of 2