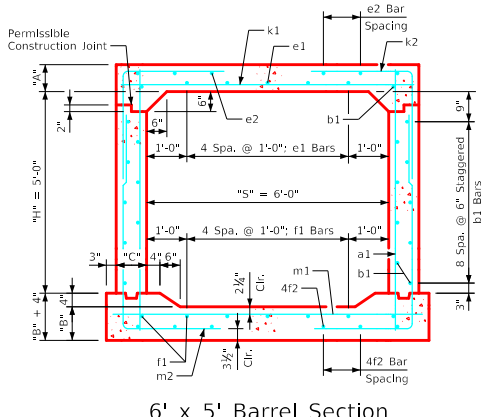
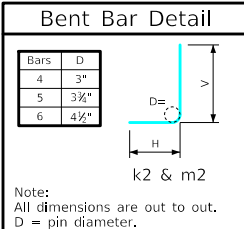


Variable Dimensions and Quantities for 6' x 5' Barrel Sections

Dimensions										Bar List																			Quantities																				
Fill	S	H	A	B	C	D	a1		b1		e1		e2		f1		f2		k1			k2			k9		m1		m2			Concrete (CY/FT)				Steel (LB/FT)													
0	6	5	10.5	10	9	9	Size	Sp.	L	Size	Sp.	No.	Size	Sp.	No.	Size	Sp.	No.	Size	Sp.	No.	Size	Sp.	L	Size	Sp.	L	Size	Sp.	L	Size	Sp.	L	Size	Sp.	L	Slab	Floor	Walls	Total									
1	6	5	9	10	9	9	4	9	6'-6"	4	6	20	4	12	5	4	14	6	4	12	7	4	14	6	6	9	7'-2"	5	12	7'-11"	4'-7"	3'-4"	-	-	6	9	7'-8"	5	12	8'-4"	2'-11"	5'-3"	5	7'-8"	0.275	0.284	0.257	0.816	110.47
2	6	5	8	10	9	9	4	9	6'-5"	4	6	20	4	12	5	4	15	6	4	12	7	4	13	6	5	9	7'-2"	5	12	6'-2"	3'-1"	3'-1"	5	7'-2"	6	9	7'-8"	5	12	8'-0"	2'-9"	5'-3"	5	7'-8"	0.218	0.284	0.257	0.759	99.79
3	6	5	8	10	9	9	4	9	6'-5"	4	6	20	4	12	5	4	15	6	4	12	7	4	12	6	4	6	7'-2"	5	12	6'-2"	3'-1"	3'-1"	5	7'-2"	4	6	7'-8"	5	12	7'-10"	2'-7"	5'-3"	5	7'-8"	0.218	0.284	0.257	0.759	93.03
4-8	6	5	8	10	9	9	4	9	6'-5"	4	6	20	4	12	5	4	11	6	4	12	7	4	11	6	4	6	7'-2"	5	12	5'-7"	2'-6"	3'-1"	5	7'-2"	4	6	7'-8"	5	12	7'-8"	2'-5"	5'-3"	5	7'-8"	0.218	0.284	0.257	0.759	91.37
9-10	6	5	8	10	9	9	4	9	6'-5"	4	6	20	4	12	5	4	10	6	4	12	7	4	18	4	4	6	7'-2"	5	12	5'-4"	2'-3"	3'-1"	5	7'-2"	4	6	7'-8"	5	12	7'-4"	2'-1"	5'-3"	5	7'-8"	0.218	0.284	0.257	0.759	88.71
11-15	6	5	8	10	9	9	4	9	6'-5"	4	6	20	4	12	5	4	10	6	4	12	7	4	18	4	6	9	7'-2"	5	12	5'-4"	2'-3"	3'-1"	5	7'-2"	6	9	7'-8"	5	12	7'-4"	2'-1"	5'-3"	5	7'-8"	0.218	0.284	0.257	0.759	99.71
16-20	6	5	8	10	9	9	4	12	6'-5"	4	6	20	4	12	5	4	17	4	4	12	7	4	17	4	5	6	7'-2"	4	6	4'-9"	2'-0"	2'-9"	4	7'-2"	5	6	7'-8"	4	6	7'-3"	2'-0"	5'-3"	4	7'-8"	0.218	0.284	0.257	0.759	99.68
21-25	6	5	8	10	9	9	4	9	6'-5"	4	6	20	4	12	5	4	17	4	4	12	7	4	17	4	6	6	7'-2"	4	6	4'-9"	2'-0"	2'-9"	4	7'-2"	6	6	7'-8"	4	6	7'-3"	2'-0"	5'-3"	4	7'-8"	0.218	0.284	0.257	0.759	116.18
26-30	6	5	8.5	11	9	9	5	12	6'-6"	4	6	20	4	12	5	4	17	4	4	12	7	4	17	4	6	6	7'-2"	4	6	4'-9"	2'-0"	2'-9"	4	7'-2"	6	6	7'-8"	4	6	7'-4"	2'-0"	5'-4"	4	7'-8"	0.229	0.308	0.257	0.794	118.82
31-35	6	5	9.5	12	9	9	5	12	6'-8"	4	6	20	4	12	5	4	16	4	4	12	7	4	17	4	6	6	7'-2"	4	6	4'-9"	1'-11"	2'-10"	4	7'-2"	6	6	7'-8"	4	6	7'-5"	2'-0"	5'-5"	4	7'-8"	0.252	0.333	0.257	0.842	119.39
36-40	6	5	10.5	12.5	9	6	4	6	6'-10"	4	6	20	4	12	5	4	17	4	4	12	7	4	18	4	8	9	7'-2"	4	6	4'-11"	2'-0"	2'-11"	4	7'-2"	8	9	7'-8"	4	6	7'-7"	2'-1"	5'-6"	4	7'-8"	0.275	0.345	0.257	0.877	134.37
41-45	6	5	11	13.5	9	6	4	6	6'-11"	4	6	20	4	12	5	4	17	4	4	12	7	4	18	4	8	9	7'-2"	4	6	4'-11"	2'-0"	2'-11"	4	7'-2"	8	9	7'-8"	4	6	7'-8"	2'-1"	5'-7"	4	7'-8"	0.287	0.370	0.257	0.914	134.82
46-50	6	5	11.5	14	9	6	4	6	7'-0"	4	6	20	4	12	5	4	18	4	4	12	7	4	9	6	8	9	7'-2"	4	6	5'-1"	2'-1"	3'-0"	4	7'-2"	7	6	7'-8"	4	6	7'-9"	2'-2"	5'-7"	4	7'-8"	0.299	0.382	0.257	0.938	140.24
51-55	6	5	12.5	14.5	9.5	6	4	6	7'-2"	4	6	20	4	12	5	4	11	6	4	12	7	4	11	6	7	6	7'-3"	6	12	6'-4"	2'-6"	3'-10"	6	7'-3"	7	6	7'-9"	6	12	8'-2"	2'-6"	5'-8"	6	7'-9"	0.326	0.399	0.271	0.996	158.61



- Notes:**
- Dimensions listed on this sheet to be used in conjunction with Sheet RCB G3-20.
 - The k2 and m2 bars horizontal legs may lap in low fill situations.
 - Fill dimensions "S" and "H" are in feet.
 - Dimensions "A", "B", "C", "D", and "Sp." listed in the bar list are in inches.
 - Dimensions "L", "H", "V" are in feet and inches.

LATEST REVISION DATE	APPROVED BY BRIDGE ENGINEER	<p style="margin: 0;">Standard Design Single Reinforced Concrete Box Culverts July, 2020</p>	
		<p>Culvert Barrel Details</p> <p>6' x 5' Barrel Sections</p>	RCB 6-5-20

ENGLISHLRFDDESIGNEDSINGLECULVERTS.DGN - RCB 6-5-20 - THIS SHEET ISSUED 07-2020.