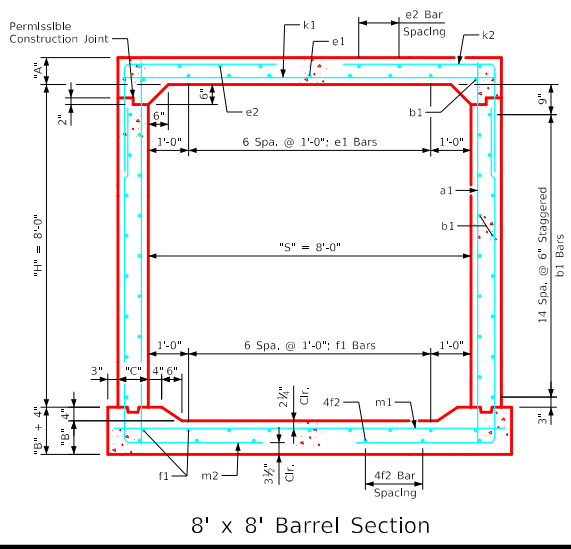
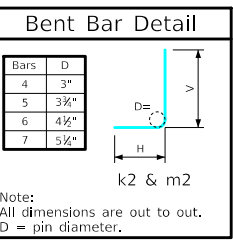


Variable Dimensions and Quantities for 8' x 8' Barrel Sections

Dimensions										Bar List																		Quantities																					
Fill	S	H	A	B	C	D	a1		b1		e1		e2		f1		f2		k1			k2			k9			m1		m2		m9		Slab	Floor	Walls	Total	Steel (LB/FT)											
0	8	8	12.5	11	9	9	5	12	9'-10	4	6	32	5	12	7	4	13	8	4	12	9	4	13	8	6	9	9'-2	4	6	8'-6	5'-5	3'-1	-	-	5	6	9'-8	4	6	13'-9	5'-5	8'-4	-	-	0.399	0.376	0.424	1.199	165.84
1	8	8	10.5	11	9	9	4	9	9'-8	4	6	32	5	12	7	4	13	8	4	12	9	4	13	8	6	9	9'-2	4	6	8'-4	5'-5	2'-11	-	-	5	6	9'-8	4	6	13'-9	5'-5	8'-4	-	-	0.340	0.376	0.424	1.140	161.68
2	8	8	8	10	9	9	5	12	9'-5	4	6	32	5	12	7	4	13	8	4	12	9	4	13	8	5	6	9'-2	4	6	8'-2	5'-5	2'-9	-	-	6	6	9'-8	4	6	12'-10	4'-7	8'-3	-	-	0.267	0.345	0.424	1.036	170.74
3	8	8	8	10	9	9	4	9	9'-5	4	6	32	4	12	7	4	13	8	4	12	9	4	13	8	6	9	9'-2	4	6	7'-7	4'-10	2'-9	-	-	5	6	9'-8	4	6	12'-1	3'-10	8'-3	4	9'-8	0.267	0.345	0.424	1.036	152.45
4-7	8	8	8	10	9	9	4	9	9'-5	4	6	32	4	12	7	4	12	8	4	12	9	4	17	6	6	9	9'-2	4	6	6'-6	3'-9	2'-9	4	9'-2	5	6	9'-8	4	6	11'-8	3'-5	8'-3	4	9'-8	0.267	0.345	0.424	1.036	147.39
8-10	8	8	8	10	9	9	4	9	9'-5	4	6	32	4	12	7	4	14	6	4	12	9	4	14	6	5	6	9'-2	4	6	5'-10	2'-11	2'-11	4	9'-2	5	6	9'-8	4	6	11'-2	2'-11	8'-3	4	9'-8	0.267	0.345	0.424	1.036	143.08
11-15	8	8	8	10	9	9	4	12	9'-5	4	6	32	4	12	7	4	15	6	4	12	9	4	12	6	6	6	9'-2	5	6	6'-2	3'-1	3'-1	5	9'-2	6	6	9'-8	5	6	10'-11	2'-8	8'-3	5	9'-8	0.267	0.345	0.424	1.036	183.18
16-20	8	8	9	11	9	9	4	9	9'-7	4	6	32	4	12	7	4	13	6	4	12	9	4	13	6	8	9	9'-2	6	9	6'-4	2'-9	3'-7	6	9'-2	7	6	9'-8	6	9	11'-1	2'-9	8'-4	6	9'-8	0.296	0.376	0.424	1.096	205.53
21-25	8	8	10	12.5	9.5	9	4	12	9'-9	4	6	32	4	12	7	4	11	6	4	12	9	4	12	6	7	6	9'-3	5	6	5'-10	2'-7	3'-3	5	9'-3	7	6	9'-9	5	6	11'-2	2'-8	8'-6	5	9'-9	0.329	0.427	0.447	1.203	204.68
26-30	8	8	11	13.5	10.5	9	5	12	9'-11	4	6	32	4	12	7	4	12	6	4	12	9	4	12	6	7	6	9'-5	5	6	6'-1	2'-9	3'-4	5	9'-5	7	6	9'-11	5	6	11'-5	2'-10	8'-7	5	9'-11	0.367	0.465	0.496	1.328	216.08
31-35	8	8	12.5	15	11.5	6	4	6	10'-2	4	6	32	4	12	7	4	12	6	4	12	9	4	13	6	7	6	9'-7	6	9	6'-9	2'-10	3'-11	6	9'-7	7	6	10'-1	6	9	11'-8	3'-0	8'-8	6	10'-1	0.421	0.522	0.542	1.485	227.03
36-40	8	8	13.5	16	12.5	6	4	6	10'-4	4	6	32	4	12	7	4	12	6	4	12	9	4	13	6	7	6	9'-9	5	6	6'-7	3'-0	3'-7	5	9'-9	7	6	10'-3	5	6	11'-10	3'-1	8'-9	5	10'-3	0.462	0.565	0.589	1.616	229.08
41-45	8	8	14.5	17	13.5	9	6	12	10'-6	4	6	32	4	12	7	4	13	6	4	12	9	4	13	6	7	6	9'-11	5	6	6'-10	3'-2	3'-8	5	9'-11	7	6	10'-5	5	6	12'-1	3'-3	8'-10	5	10'-5	0.503	0.608	0.636	1.747	237.39
46-50	8	8	15.5	18	14.5	9	4	12	10'-8	4	6	32	4	12	7	4	16	6	4	12	9	4	13	6	9	9	10'-1	7	9	8'-4	3'-10	4'-6	7	10'-1	9	9	10'-7	7	9	12'-3	3'-4	8'-11	7	10'-7	0.545	0.653	0.683	1.881	271.92
51-55	8	8	16	18.5	15	9	6	9	10'-9	4	6	32	4	12	7	4	16	6	4	12	9	4	14	6	9	9	10'-2	5	6	7'-6	3'-9	3'-9	5	10'-2	9	9	10'-8	5	6	12'-5	3'-5	9'-0	5	10'-8	0.566	0.675	0.706	1.947	267.16



- Notes:**
- Dimensions listed on this sheet to be used in conjunction with Sheet RCB G3-20.
 - The k2 and m2 bars horizontal legs may lap in low fill situations.
 - Fill, dimensions "S" and "H" are in feet.
 - Dimensions "A", "B", "C", "D", and "Sp." listed in the bar list are in inches.
 - Dimensions "L", "H", "V" are in feet and inches.

LATEST REVISION DATE	APPROVED BY BRIDGE ENGINEER	Standard Design Single Reinforced Concrete Box Culverts July, 2020
Culvert Barrel Details 8' x 8' Barrel Sections		RCB 8-8-20

ENGLISHLRFDDESIGNEDSINGLECULVERTS.DGN - RCB 8-8-20 - THIS SHEET ISSUED 07-2020.