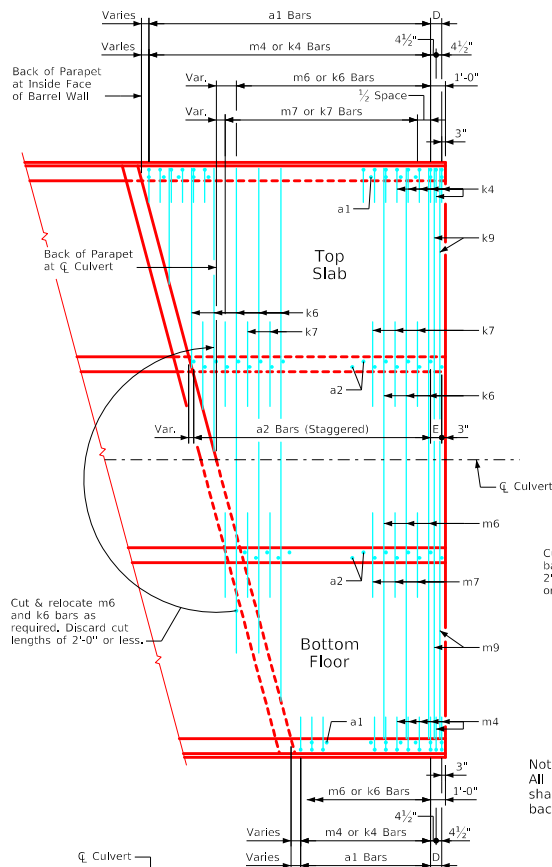
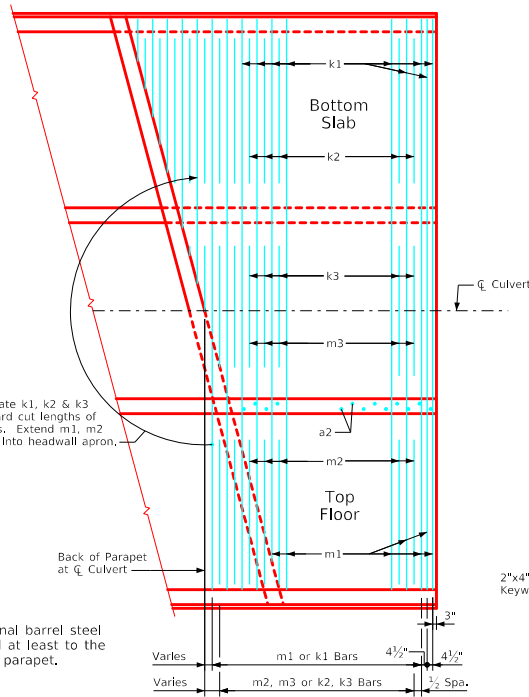


ENGLISHRFD\DESIGNED\TRIPLECULVERTS.DGN - TRRCB G3-20 - THIS SHEET ISSUED 07-2020.



Cut & relocate m6 and k6 bars as required. Discard cut lengths of 2'-0" or less.

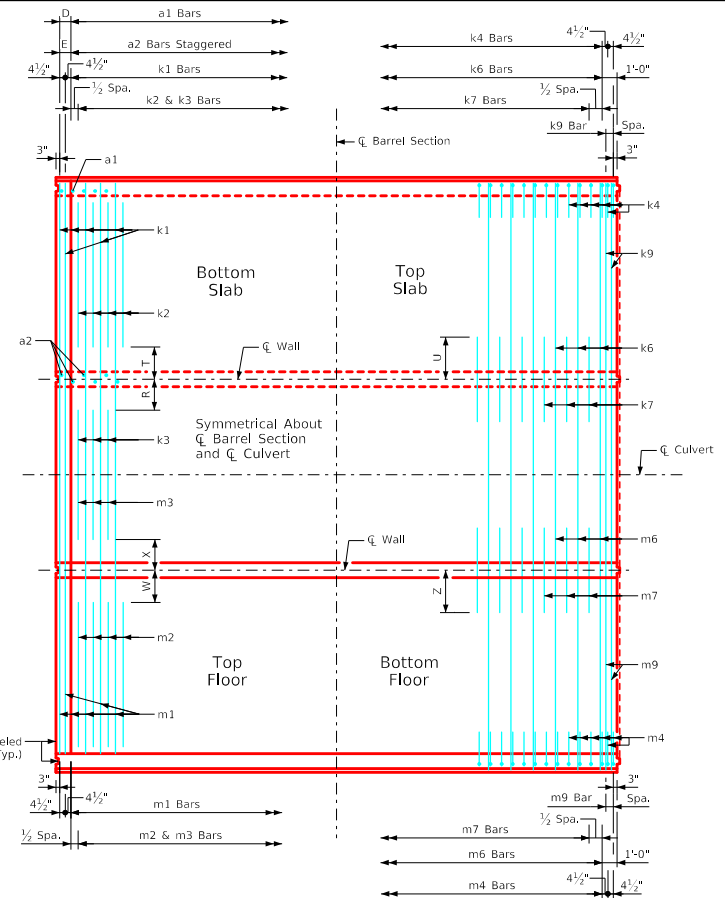
Note:
All longitudinal barrel steel shall extend at least to the backface of parapet.



End Section Plan Views
(Keyways not shown)

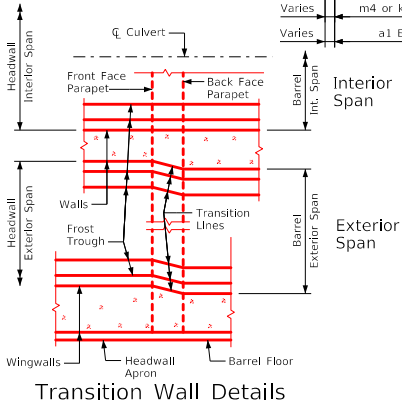
Note:
End section details shown are for a 15° skew barrel. Use for skews of 30° & 45° by increasing the number of transverse reinforcing bars required to be cut and relocated.

Note:
Typical for lengths of 38', 35', 32', 29', and 26'. These lengths are shown as typical because all transverse and vertical reinforcing steel spacing repeats in 3'-0" intervals.

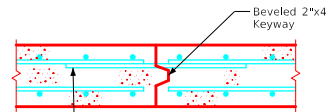


Standard Section Plan View
(Keyway is to be omitted when bell joints are used)

Note:
Dimensions listed on this sheet to be used in conjunction with dimensions and quantities for barrel section sheets.



5r1 Bars - One Const. Jt.		
Span	No.	Weight (LB)
10'-0"	34	124
12'-0"	40	146



One set of 5r1 x 3'-6" dowel bars @ 1'-0" spacing required in slab at all culvert barrel joints, except joints with bell joints. See table for number required and total weight.

Top Slab Construction Joint Detail

LATEST REVISION DATE	APPROVED BY BRIDGE ENGINEER	IOWADOT Highway Division	
		Standard Design Triple Reinforced Concrete Box Culverts July, 2020	
		Typical Culvert Barrel Details	TRRCB G3-20