

# DESIGNER INFO

Refer to Materials LM. 455.02 for a list of approved sources. If no MASH compliant steel beam guardrail flared end terminals are available, furnish a steel beam guardrail flared end terminal from the list of approved sources for Local Systems.

Use materials meeting the respective manufacturer's specifications. Install end terminals according to the manufacturer's recommendations.

Note: at the Contractor's option, and at no additional cost to the Contracting Authority, alternate post designs developed by the manufacturer and accepted by the FHWA for use within the end terminal may be substituted for the post design shown. When such a substitution is made, provide the Engineer with three copies of the most current installation and maintenance manual for the alternate design.

① Cover entire face of impact head or buffered end section with alternating black and yellow striped adhesive sheeting meeting the following requirements:

- Stripes are approximately 3 inches wide and slope down at a 45 degree angle toward the side on which traffic is to pass the end terminal.

- Yellow stripes meet the retroreflectivity requirements for Type III or Type IV reflective sheeting.

② Refer to BA-200.

Possible Contract Item:  
Steel Beam Guardrail Flared End Terminal, BA-206

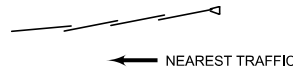
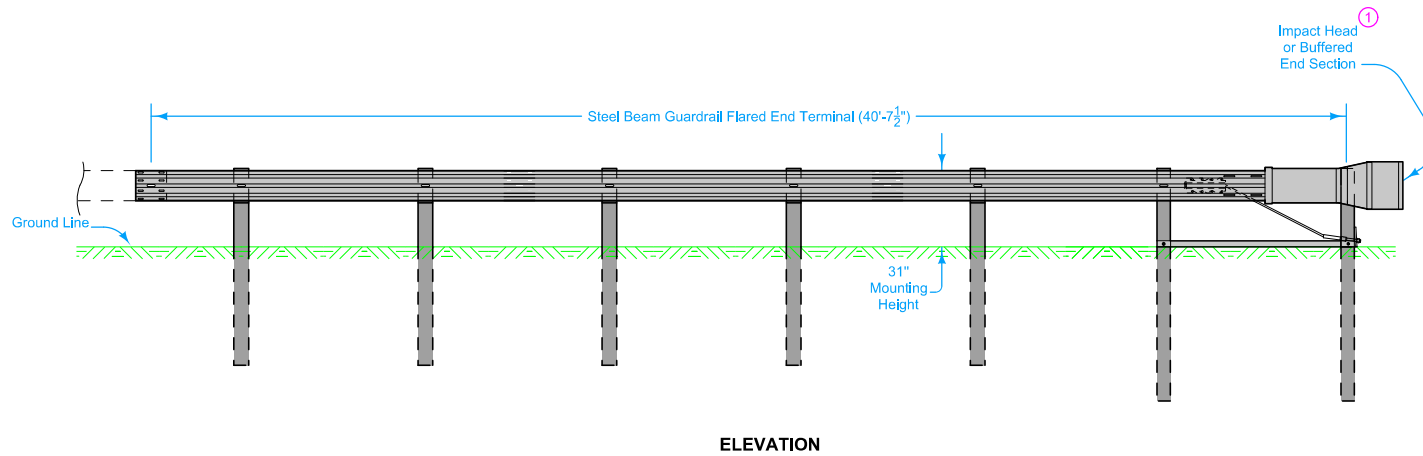
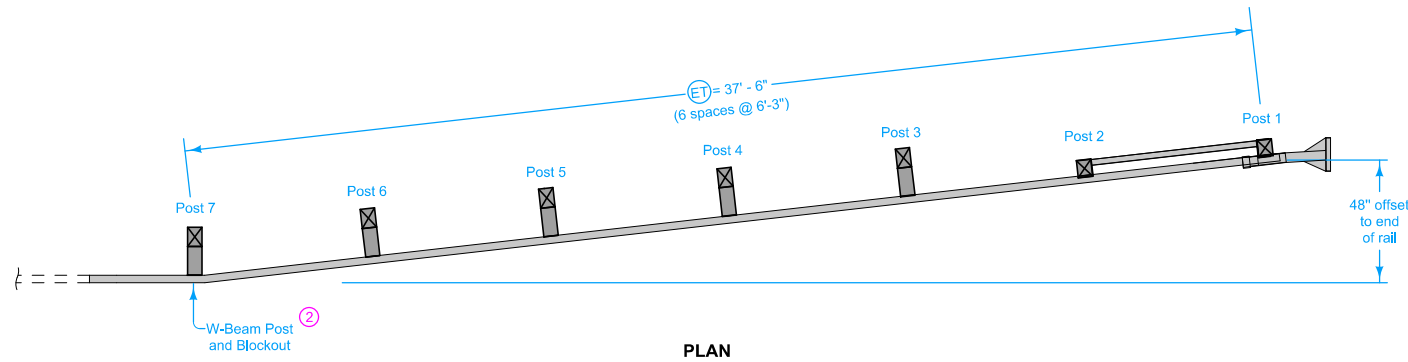
Possible Tabulations:  
108-8A  
108-8B  
108-8C

	REVISION
	4   10-15-19
<b>STANDARD ROAD PLAN</b>	<b>BA-206</b>
SHEET 1 of 1	

REVISIONS: Retitled. Modified graphics and notes.

APPROVED BY DESIGN METHODS ENGINEER

**STEEL BEAM GUARDRAIL  
FLARED END TERMINAL  
FOR CABLE CONNECTION**



LAPPING PROCEDURE