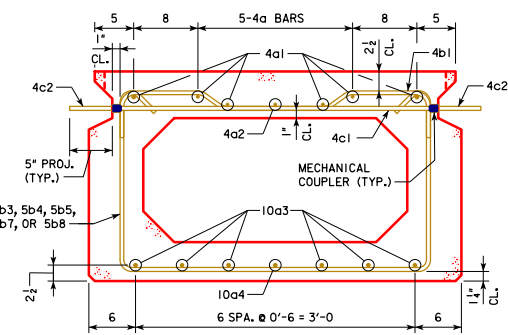
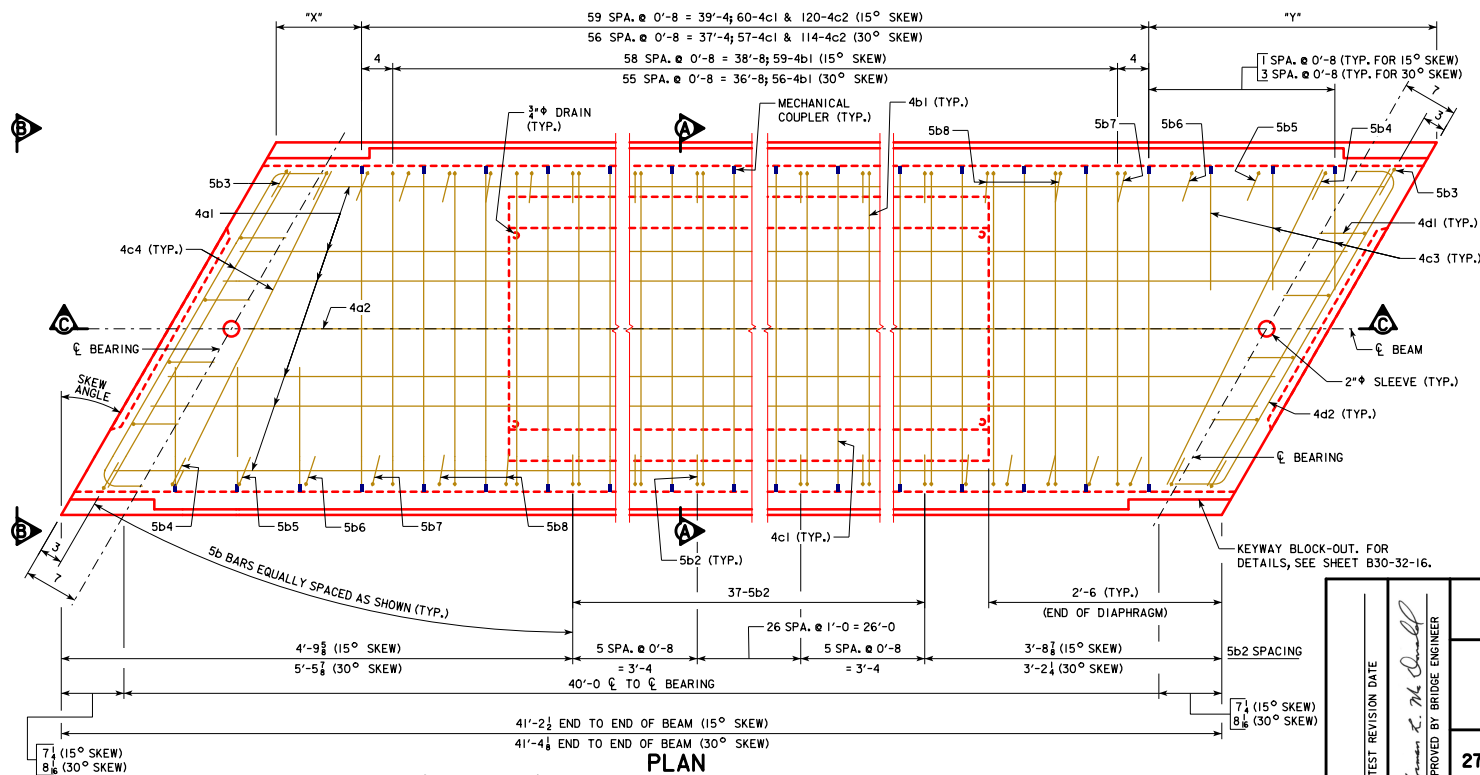


**SECTION C-C**  
(KEYWAY NOT SHOWN FOR CLARITY)



**SECTION A-A**

NOTES:  
OMIT KEYWAY, MECHANICAL COUPLERS, AND 4c2 BARS ON EXTERIOR FACE OF EXTERIOR BEAMS.



**PLAN**

(30° SKEW SHOWN, 15° SKEW SIMILAR) (INTERIOR BEAM SHOWN, EXTERIOR BEAM SIMILAR)  
(10a BARS IN BOTTOM SLAB AND 4c2 BARS NOT SHOWN FOR CLARITY)

BEAM LINE	15° SKEW		30° SKEW	
	*x*	*y*	*x*	*y*
A	12 1/2	1'-8 1/2	11 1/4	3'-0 1/4
B	2 3/8	1'-7 1/2	10 1/2	3'-1 1/4
C	3 1/2	1'-7	10 1/2	3'-1 1/2
D	4 3/8	1'-6 1/4	10 1/2	3'-1 1/2
E	5 1/4	1'-5 1/4	10	3'-2 1/4
F	6 1/8	1'-4 3/4	9 3/4	3'-2 3/4
G	7	1'-3 3/4	9 1/2	3'-2 3/4
H	7 3/8	1'-2 3/4	9 1/4	3'-2 3/4

NOTE:  
FOR BEAM LINE DESIGNATIONS, SEE SHEET B30-06-16.

NOTES:  
FOR VIEW B-B, SEE SHEET B30-52-16.  
FOR BEAM CHAMFER DETAILS, SEE SHEET B30-33-16.

LATEST REVISION DATE  Approved by Bridge Engineer <i>Thomas E. M. Conwell</i>	
	STANDARD DESIGN - 30'-0 ROADWAY, SINGLE SPAN <b>CONCRETE BOX BEAM BRIDGES</b>
	DECEMBER, 2016
<b>27" x 48" x 40'-0 RCBB DETAILS</b> <b>15° AND 30° SKEW</b>	
<b>B30-57-16</b>	