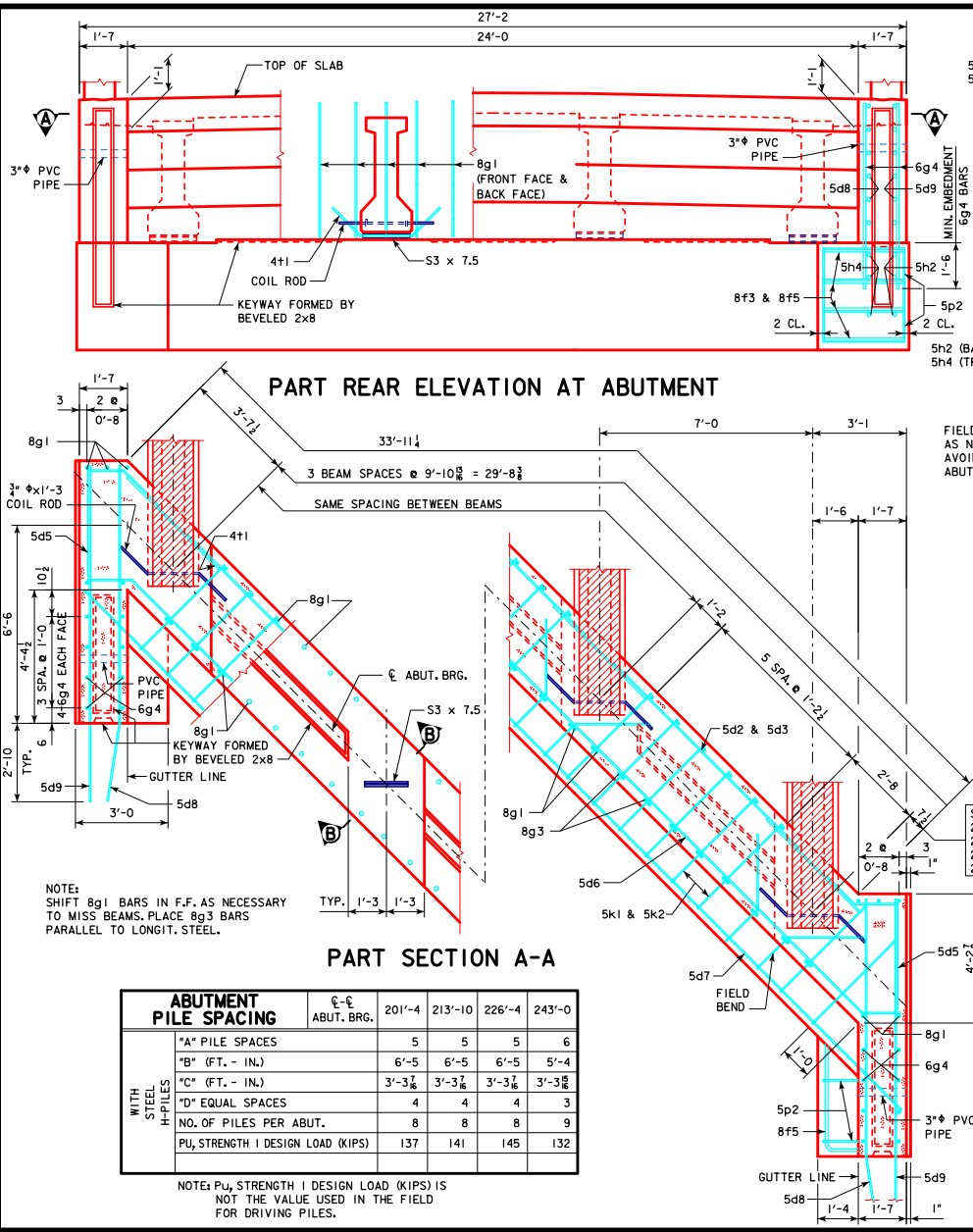
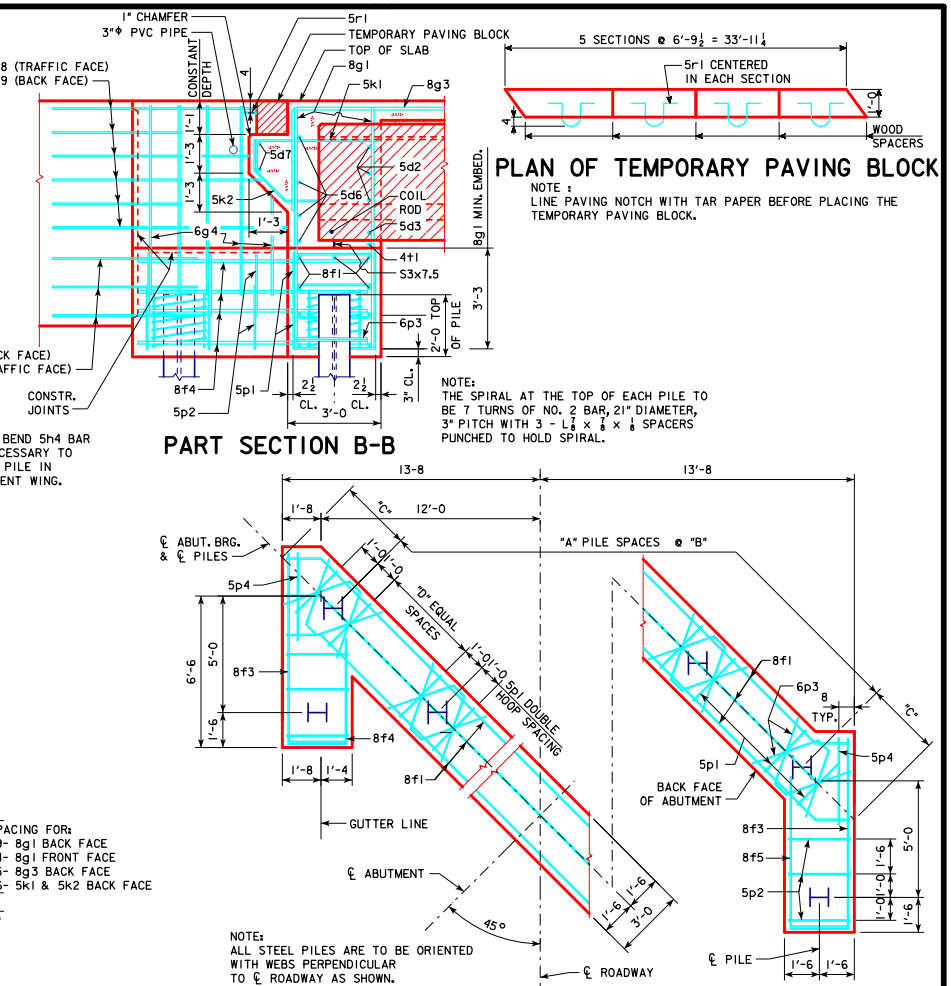


REVISED 05-13 - REVISION FOR LRFD PILE DESIGN.  
REVISED 10-2016 - REMOVED SECTION DIRECTORS "C-C" FROM PART SECTION B-B, THEY WERE VOID BECAUSE THERE WAS NO SECTION C-C DETAIL.



ABUTMENT PILE SPACING		201'-4	213'-10	226'-4	243'-0
WITH STEEL H-PILES	"A" PILE SPACES	5	5	5	6
	"B" (FT. - IN.)	6'-5	6'-5	6'-5	5'-4
	"C" (FT. - IN.)	3'-3 $\frac{3}{8}$	3'-3 $\frac{3}{8}$	3'-3 $\frac{3}{8}$	3'-3 $\frac{3}{8}$
	"D" EQUAL SPACES	4	4	4	3
	NO. OF PILES PER ABUT.	8	8	8	9
	P <sub>u</sub> , STRENGTH I DESIGN LOAD (KIPS)	137	141	145	132



**ABUTMENT NOTES:**

MINIMUM CLEAR DISTANCE FROM FACE OF CONCRETE TO NEAR REINFORCING BAR IS TO BE 2" UNLESS OTHERWISE NOTED OR SHOWN.

ABUTMENT PILES SHALL BE DRIVEN TO VALUES SHOWN IN DESIGN PLANS.

BARRIER RAIL NOT SHOWN IN DETAILS.

IF ROCK IS CLOSER THAN 15' BELOW ABUTMENT FOOTING, SPECIAL ANALYSIS MAY BE REQUIRED.

LATEST REVISION DATE  
10-2016

*Thomas E. M. Dowell*  
APPROVED BY BRIDGE ENGINEER

**Iowa Department of Transportation**  
Highway Division

STANDARD DESIGN - 24' ROADWAY, THREE SPAN BRIDGE

**PRETENSIONED PRESTRESSED CONCRETE BEAM BRIDGES**

DECEMBER, 2006

<b>ABUTMENT DETAILS</b> 45° SKEW C BEAMS	<b>H24-26-06</b>
---	------------------