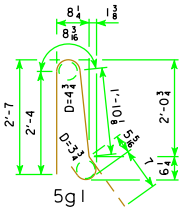


EPOXY REINFORCING STEEL-TWO BARRIER RAILS

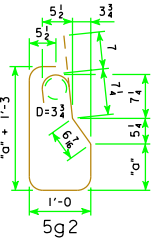
BRIDGE LENGTH			70'-0			80'-0			90'-0			100'-0			110'-0			120'-0			130'-0			140'-0			150'-0				
SECTION	BAR	LOCATION	SHAPE	NO.	LENGTH	WEIGHT	NO.	LENGTH	WEIGHT	NO.	LENGTH	WEIGHT	NO.	LENGTH	WEIGHT	NO.	LENGTH	WEIGHT	NO.	LENGTH	WEIGHT	NO.	LENGTH	WEIGHT	NO.	LENGTH	WEIGHT				
STANDARD SECTION	5g1	VERTICAL		136	5'-11	839	156	5'-11	963	176	5'-11	1086	196	5'-11	1210	216	5'-11	1333	236	5'-11	1456	256	5'-11	1580	276	5'-11	1703	296	5'-11	1827	
	5g2	VERTICAL		136	6'-10	969	156	6'-11	1125	176	7'-1	1300	196	7'-4	1499	216	7'-6	1690	236	7'-9	1908	256	7'-11	2114	276	8'-2	2351	296	8'-5	2598	
	5f1	LONGITUDINAL		36	35'-1	1317	54	27'-5	1544	54	30'-9	1732	54	34'-1	1920	54	37'-5	2107	72	31'-2	2340	72	33'-8	2528	72	36'-2	2716	72	38'-8	2904	
	4 END SECTIONS @ 458 LBS.						1832			1832			1832			1832			1832			1832			1832			1832			1832
(INCLUDE WITH SUPERSTRUCTURE REINFORCING)						TOTAL (LBS.)	4957		TOTAL (LBS.)	5464		TOTAL (LBS.)	5950		TOTAL (LBS.)	6461		TOTAL (LBS.)	6962		TOTAL (LBS.)	7536		TOTAL (LBS.)	8054		TOTAL (LBS.)	8602		TOTAL (LBS.)	9161

REINFORCING QUANTITIES SHOWN ARE BASED ON 45° SKEW BID LENGTHS.

BENT BAR DETAILS



NOTE: ALL DIMENSIONS ARE OUT TO OUT.
"D"= PIN DIAMETER.



5g2 BARS		
BRIDGE	"a"	LENGTH
70'	1'-2	6'-10
80'	1'-2 1/2	6'-11
90'	1'-3 1/2	7'-1
100'	1'-5	7'-4
110'	1'-6	7'-6
120'	1'-7 1/2	7'-9
130'	1'-8 1/2	7'-11
140'	1'-10	8'-2
150'	1'-11 1/2	8'-5

CONCRETE PLACEMENT SUMMARY

BRIDGE LENGTH		70'-0	80'-0	90'-0	100'-0	110'-0	120'-0	130'-0	140'-0	150'-0
STANDARD SECTION *	2 X B @ 0.1052 CU. YDS. PER FT.	14.4	16.5	18.6	20.7	22.8	24.9	27.0	29.1	31.2
END SECTION	4 @ 0.65 CU. YDS.	2.6	2.6	2.6	2.6	2.6	2.6	2.6	2.6	2.6
TOTAL (CU. YDS.)		17.0	19.1	21.2	23.3	25.4	27.5	29.6	31.7	33.8

* SEE J40-45-06 FOR DIMENSION "B".
CONCRETE QUANTITIES SHOWN ARE
BASED ON 45° SKEW BID LENGTHS.

CONCRETE BARRIER RAIL QUANTITIES

BRIDGE LENGTH		UNIT	70'-0	80'-0	90'-0	100'-0	110'-0	120'-0	130'-0	140'-0	150'-0
CONCRETE BARRIER RAILING	0° SKEW	L.F.	162.0	182.0	202.0	222.0	242.0	262.0	282.0	302.0	322.0
CONCRETE BARRIER RAILING	15° SKEW	L.F.	162.2	182.2	202.2	222.2	242.2	262.2	282.2	302.2	322.2
CONCRETE BARRIER RAILING	30° SKEW	L.F.	162.9	182.9	202.9	222.9	242.9	262.9	282.9	302.9	322.9
CONCRETE BARRIER RAILING	45° SKEW	L.F.	164.5	184.5	204.5	224.5	244.5	264.5	284.5	304.5	324.5

REVISED 07-09 - WEIGHT OF END SECTIONS CHANGED AND IS REFLECTED IN TOTAL WEIGHT.

LATEST REVISION DATE APPROVED BY BRIDGE ENGINEER 		IOWA Department of Transportation Highway Division STANDARD DESIGN - 40' ROADWAY, 3 SPAN BRIDGES CONTINUOUS CONCRETE SLAB BRIDGES NOVEMBER, 2006
	BARRIER RAIL DETAILS	J40-46-06