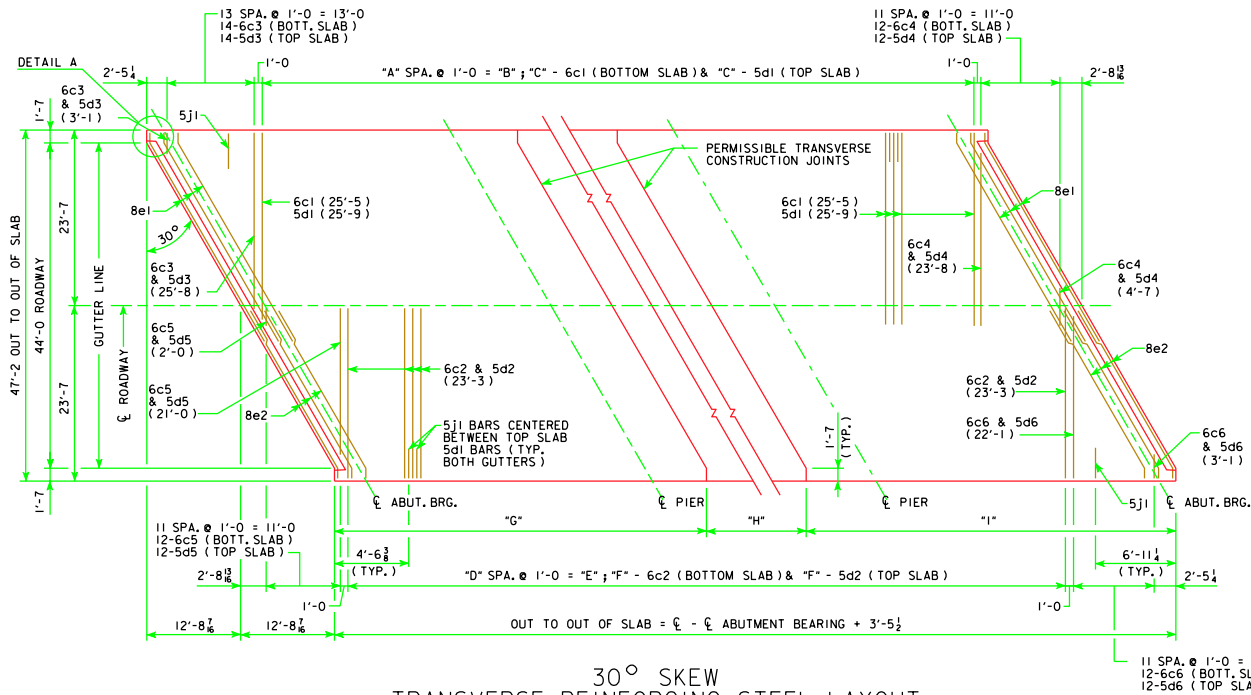
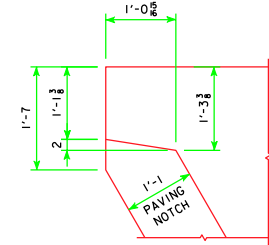


30° TRANSV. REINFORCING DIMENSION TABLE									
BRIDGE	"A"	"B"	"C"	"D"	"E"	"F"	"G"	"H"	"I"
70' BRIDGE	55	55'-0	56	57	57'-0	58	27'-5½	17'-0	29'-0
80' BRIDGE	65	65'-0	66	67	67'-0	68	31'-5½	19'-0	33'-0
90' BRIDGE	75	75'-0	76	77	77'-0	78	35'-5½	21'-0	37'-0
100' BRIDGE	85	85'-0	86	87	87'-0	88	39'-5½	23'-0	41'-0
110' BRIDGE	95	95'-0	96	97	97'-0	98	43'-5½	25'-0	45'-0
120' BRIDGE	105	105'-0	106	107	107'-0	108	47'-5½	27'-0	49'-0
130' BRIDGE	115	115'-0	116	117	117'-0	118	51'-5½	29'-0	53'-0
140' BRIDGE	125	125'-0	126	127	127'-0	128	55'-5½	31'-0	57'-0
150' BRIDGE	135	135'-0	136	137	137'-0	138	59'-5½	33'-0	61'-0



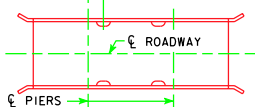
30° SKEW
TRANSVERSE REINFORCING STEEL LAYOUT

NOTE:
5d BARS ARE TO PASS UNDER
8e BARS IN CONFLICT AREAS.



DETAIL A

70'-0	5'-6 (TYP.)
80'-0	5'-6 (TYP.)
90'-0	6'-6 (TYP.)
100'-0	6'-6 (TYP.)
110'-0	7'-6 (TYP.)
120'-0	7'-6 (TYP.)
130'-0	8'-6 (TYP.)
140'-0	8'-6 (TYP.)
150'-0	8'-6 (TYP.)



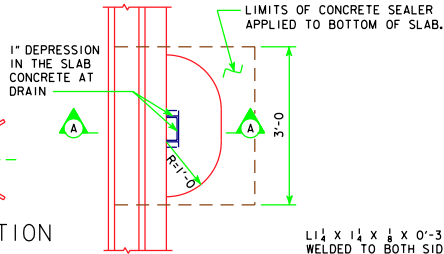
FLOOR DRAIN LOCATION

NOTE: 4" x 8" OUTSIDE DIMENSION ROLLED TUBE WITH 1" WALL THICKNESS MAY BE SUBSTITUTED FOR THE WELDED DRAIN SHOWN.

PART PLAN

FLOOR DRAIN DETAILS

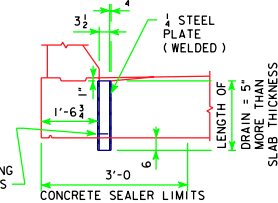
(USE FOR BARRIER RAIL ONLY, NOT REQUIRED FOR OPEN RAIL)
NOTE: DRAINS ARE TO BE GALVANIZED. INCLUDE COST OF DRAINS IN PRICE BID FOR "STRUCTURAL CONCRETE". 4 DRAINS REQUIRED.



PART PLAN

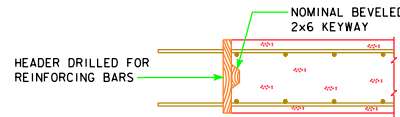
FLOOR DRAIN DETAILS

(USE FOR BARRIER RAIL ONLY, NOT REQUIRED FOR OPEN RAIL)
NOTE: DRAINS ARE TO BE GALVANIZED. INCLUDE COST OF DRAINS IN PRICE BID FOR "STRUCTURAL CONCRETE". 4 DRAINS REQUIRED.

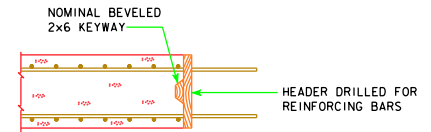


SECTION A-A

WEIGHT OF ONE FLOOR DRAIN			
SPAN	WEIGHT, LBS.	SPAN	WEIGHT, LBS.
70'-0	32	120'-0	41
80'-0	33	130'-0	43
90'-0	35	140'-0	45
100'-0	37	150'-0	48
110'-0	39		



TRANSVERSE CONSTR. JOINT



LONGITUDINAL CONSTR. JOINT

07-09 LATEST REVISION DATE	<i>Thomas E. McQuinn</i> APPROVED BY BRIDGE ENGINEER		
		STANDARD DESIGN - 44' ROADWAY, 3 SPAN BRIDGES CONTINUOUS CONCRETE SLAB BRIDGES NOVEMBER, 2006	
		SUPERSTRUCTURE DETAILS ALL BRIDGES	J44-23-06 30° SKEW

REVISED 07-09 - CHANGED THE DRAIN ANGLES DETAILS ON SECTION A-A.