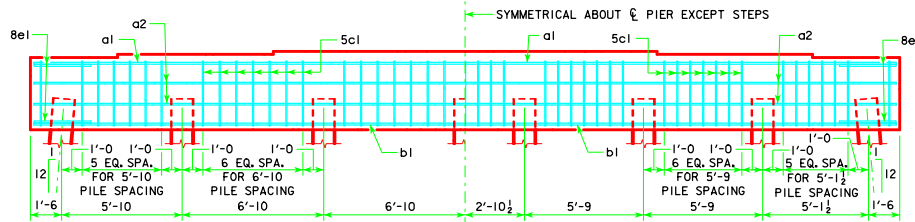
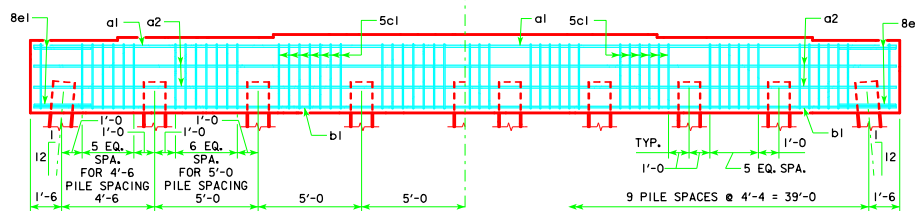


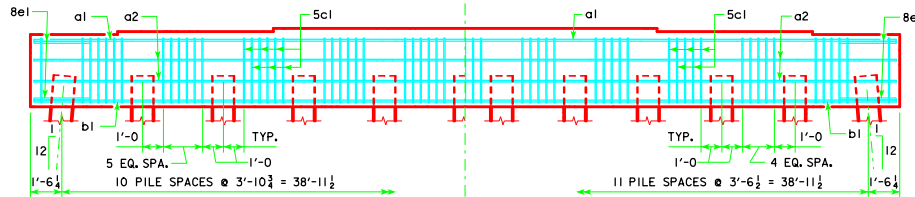
TYPICAL PLAN



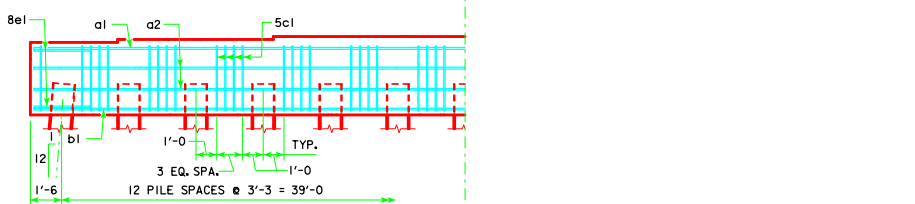
7 PILE BENT



9 PILE BENT



10 PILE BENT

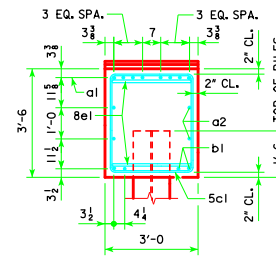


12 PILE BENT

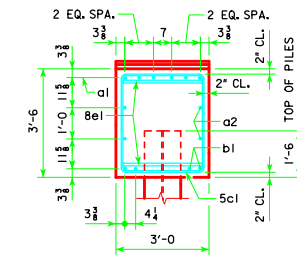


13 PILE BENT

NOTE:
 THE HEIGHT OF THE STEPS ON THE BRIDGE SEAT IS EQUAL TO THE DIFFERENCE IN ELEVATIONS OF THE TOP OF SLAB AT ADJACENT BEAMS ALONG CL PIER.
 ANCHOR BOLTS REQUIRED FOR FIXED PIER BEARINGS ONLY. FOR BOLT AND BEARING SIZES, SEE RS40-093-14, RS40-094-14 OR RS40-095-14.



VIEW A-A
 FOR 7, 8, 9, 10 & 11 PILE BENTS



VIEW A-A
 FOR 12 & 13 PILE BENTS

LATEST REVISION DATE	<i>Thomas E. McQuinn</i>	IOWADOT Highway Division	
	APPROVED BY BRIDGE ENGINEER		STANDARD DESIGN - 40' ROADWAY, 3 SPAN BRIDGES
	ROLLED STEEL BEAM BRIDGES		OCTOBER, 2014
PILE BENT PIERS HPI4 PILES 10° SKEW		RS40-102-14	