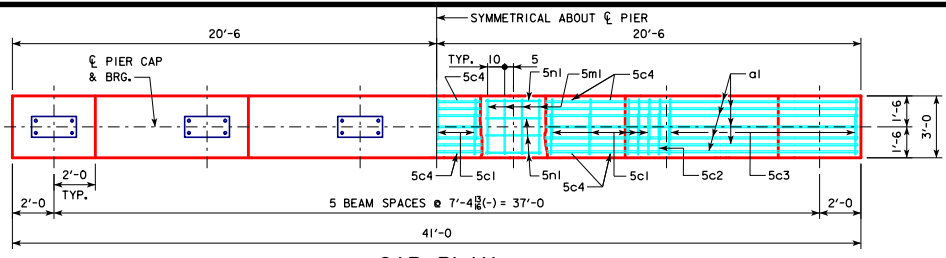
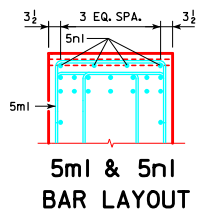


REVISED 02-2017 - CHANGED BEVELED KEYWAY ON PIER COLUMN CAP AND FOOTING TO 3"x10"x15"-0 (WAS 2"x8"x17"-0). KEYWAY LENGTH CHANGED TO BE 5'-0" LESS THAN WIDTH OF PIER COLUMN.



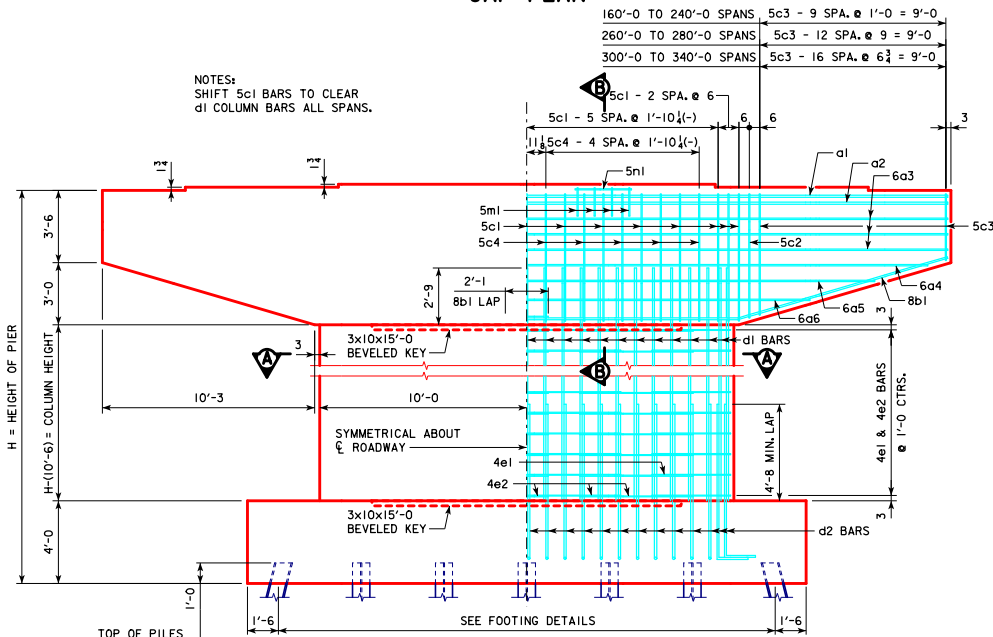
**CAP PLAN**

NOTE:  
ANCHOR BOLTS REQUIRED FOR FIXED  
PIER BEARINGS ONLY. FOR BOLT AND  
BEARING SIZES, SEE RS40-093-14,  
RS40-094-14 OR RS40-095-14.

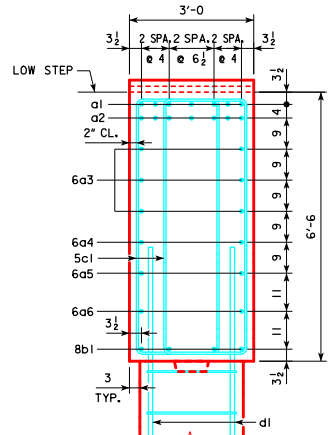


**5m1 & 5n1  
BAR LAYOUT**

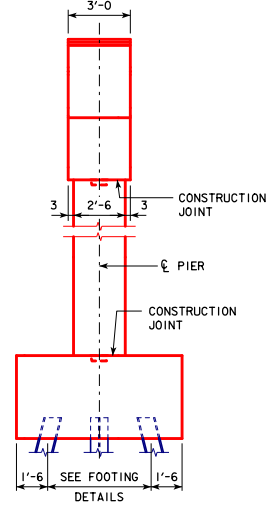
NOTES:  
SHIFT 5c1 BARS TO CLEAR  
d1 COLUMN BARS ALL SPANS.



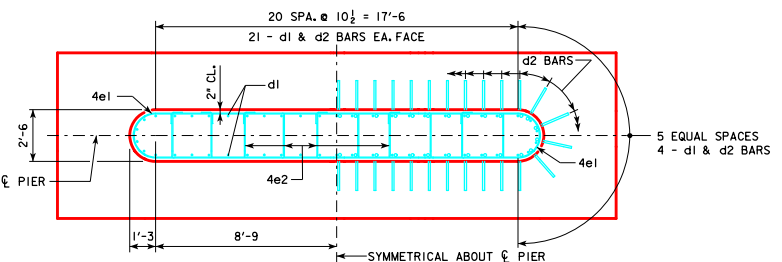
**FRONT ELEVATION**



**SECTION B-B**



**END ELEVATION**



**SECTION A-A**

02-2017 LATEST REVISION DATE  <i>Norman E. Mc Donald</i> APPROVED BY BRIDGE ENGINEER	
	STANDARD DESIGN - 40' ROADWAY, 3 SPAN BRIDGES <b>ROLLED STEEL BEAM BRIDGES</b> OCTOBER, 2014
	<b>TEE PIER CAP &amp; COLUMN DETAILS</b> 0° SKEW

**RS40-116-14**