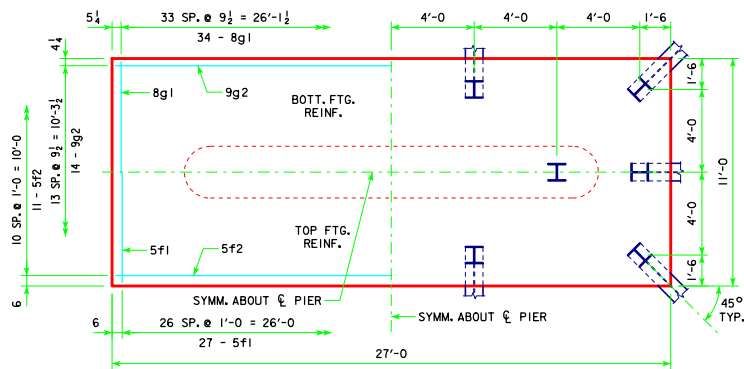
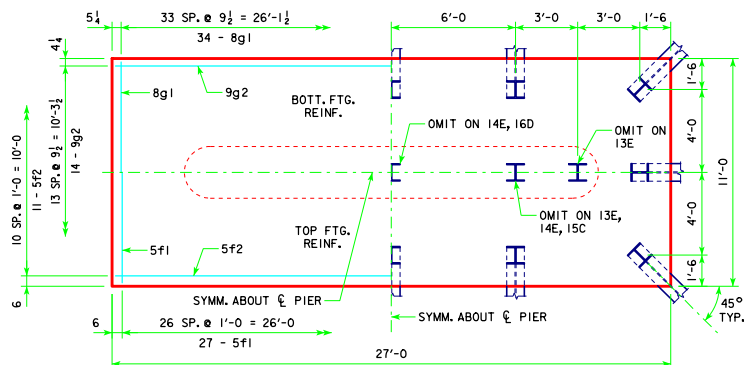


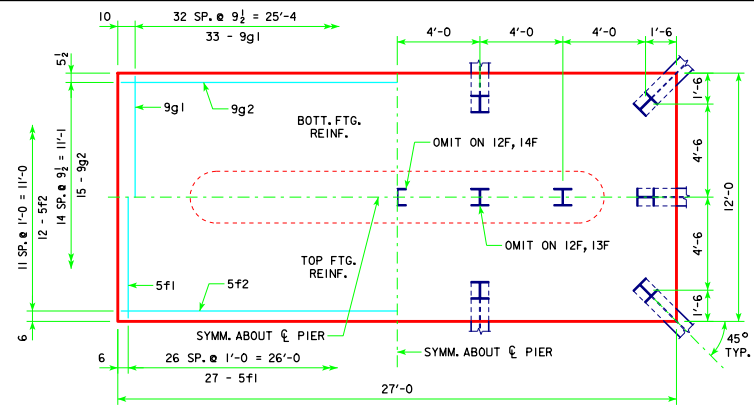
4'-0 x 11'-0 x 25'-0 FOR 13D, 14D & 16C



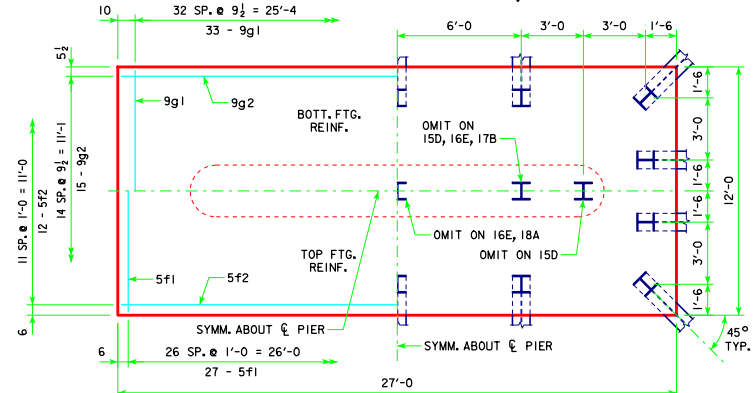
4'-0 x 11'-0 x 27'-0 FOR 12E



4'-0 x 11'-0 x 27'-0 FOR 13E, 14E, 15C & 16D



4'-0 x 12'-0 x 27'-0 FOR 12F, 13F & 14F



4'-0 x 12'-0 x 27'-0 FOR 15D, 16E, 17B, 18A & 19A

NOTE:
SEE SHEET RS40-131-14 FOR FOOTING NOTES.

LATEST REVISION DATE	<i>Thomas E. McQuinn</i> APPROVED BY BRIDGE ENGINEER		
		STANDARD DESIGN - 40' ROADWAY, 3 SPAN BRIDGES ROLLED STEEL BEAM BRIDGES OCTOBER, 2014	
		TEE PIER-HPI0x57 SRL-2 STEEL PILE FOOTINGS <small>10° SKEW - SHEET 3</small>	RS40-133-14