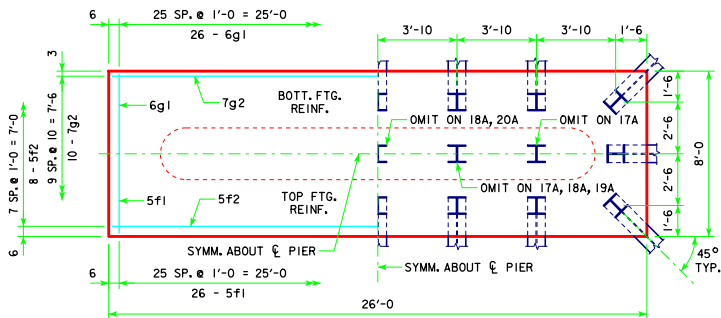
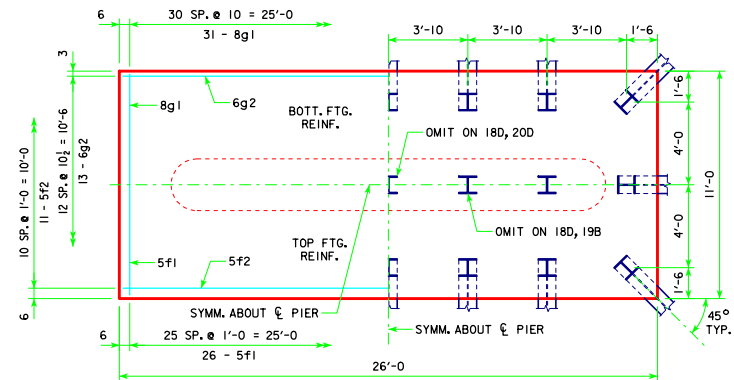


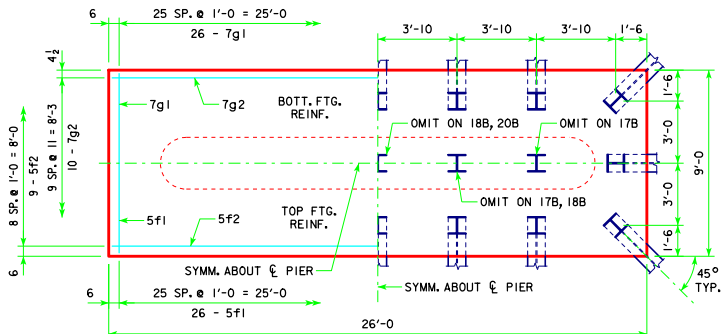
REVISED 05-13 -- REVISION FOR LRFD PILE DESIGN.



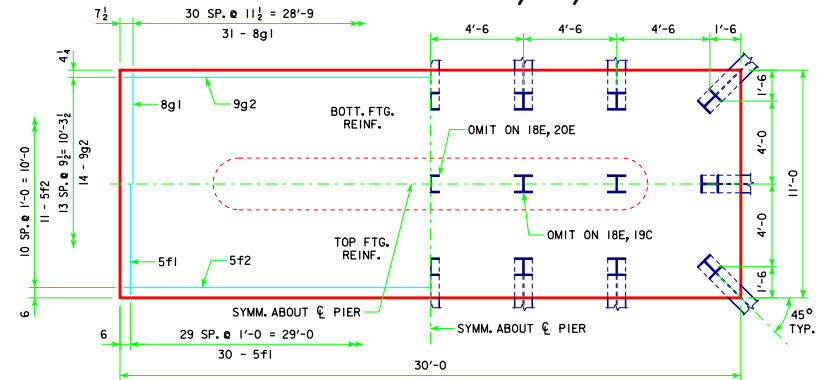
4'-0 x 8'-0 x 26'-0 FOR 17A, 18A, 19A, 20A & 21A



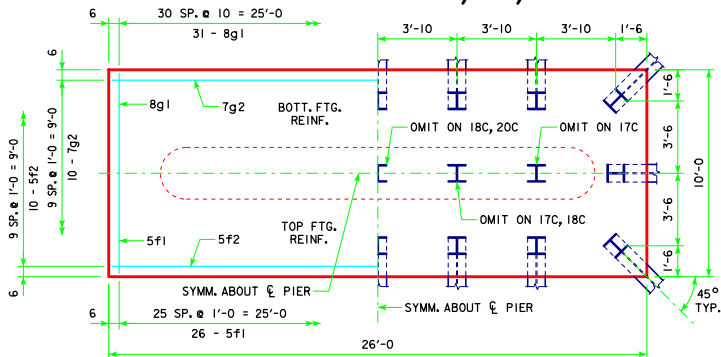
4'-0 x 11'-0 x 26'-0 FOR 18D, 19B, 20D & 21C



4'-0 x 9'-0 x 26'-0 FOR 17B, 18B, 20B & 21B

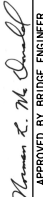



4'-0 x 11'-0 x 30'-0 FOR 18E, 19C, 20E & 21D



4'-0 x 10'-0 x 26'-0 FOR 17C, 18C & 20C

NOTE:
SEE SHEET RS40-138-10 FOR FOOTING NOTES.

LATEST REVISION DATE 05-13 APPROVED BY BRIDGE ENGINEER 	 Iowa Department of Transportation Highway Division
	STANDARD DESIGN - 40' ROADWAY, 3 SPAN BRIDGES ROLLED STEEL BEAM BRIDGES JUNE, 2010
TEE PIER-HPI0x57 SRL-1 STEEL PILE FOOTINGS 20° SKEW - SHEET 2	
RS40-139-10	