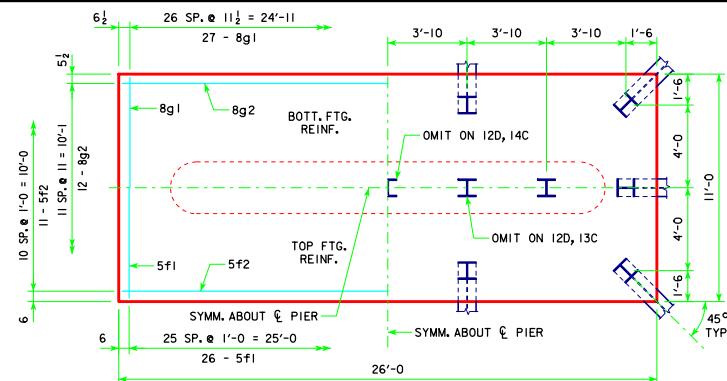
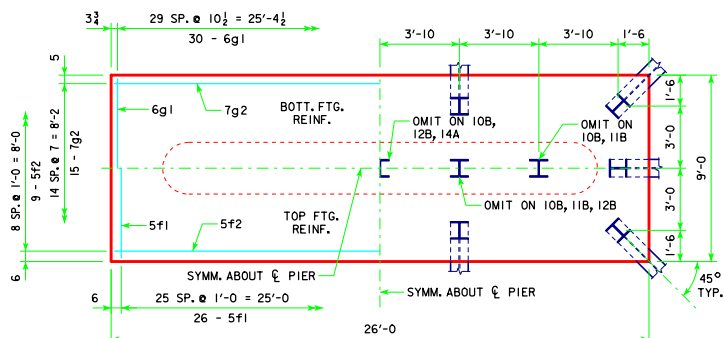


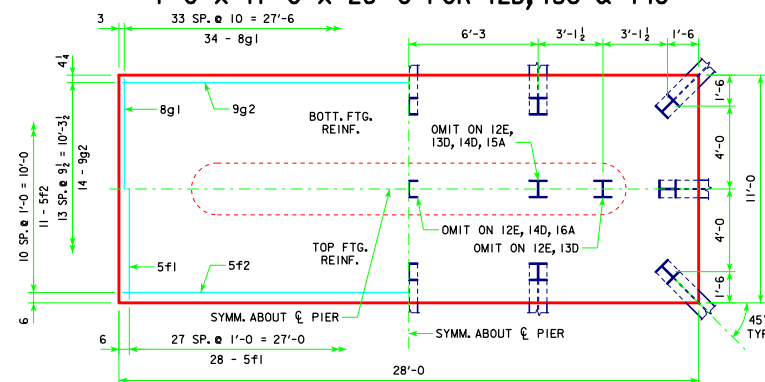
4'-0 x 8'-0 x 26'-0 FOR 10A, 11A, 12A & 13A



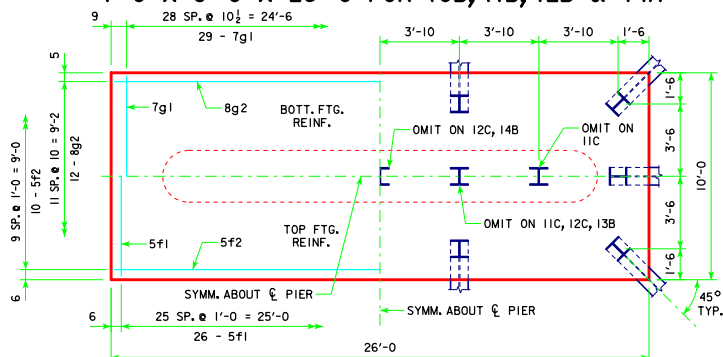
4'-0 x 11'-0 x 26'-0 FOR 12D, 13C & 14C



4'-0 x 9'-0 x 26'-0 FOR 10B, 11B, 12B & 14A



4'-0 x 11'-0 x 28'-0 FOR 12E, 13D, 14D, 15A & 16A



4'-0 x 10'-0 x 26'-0 FOR 11C, 12C, 13B & 14B

NOTE:
SEE SHEET RS40-141-14 FOR FOOTING NOTES.

LATEST REVISION DATE <i>Thomas E. McQuinn</i> APPROVED BY BRIDGE ENGINEER	
	STANDARD DESIGN - 40' ROADWAY, 3 SPAN BRIDGES ROLLED STEEL BEAM BRIDGES OCTOBER, 2014
TEE PIER-HPI0x57 SRL-2 STEEL PILE FOOTINGS 20° SKEW - SHEET 2	RS40-142-14