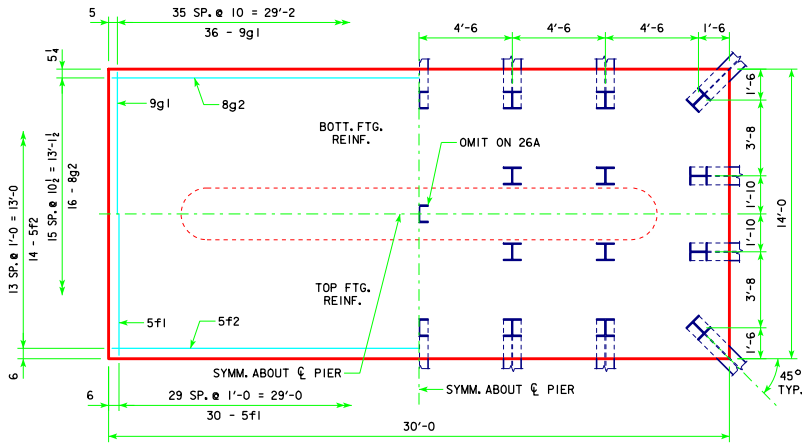
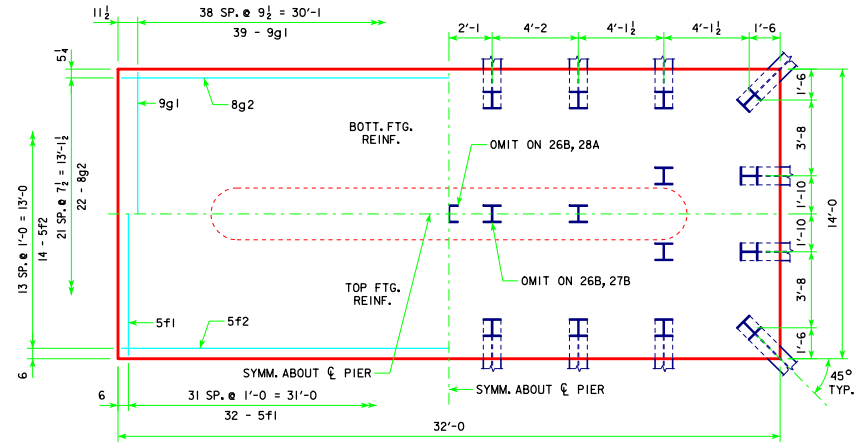


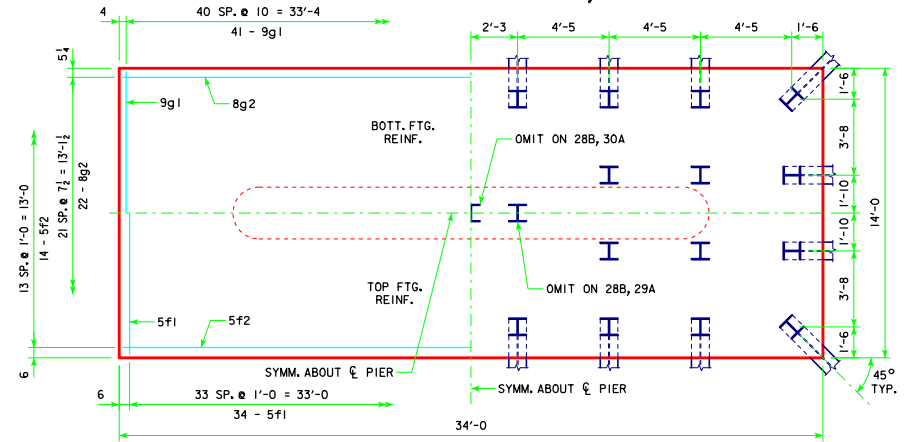
REVISED 05-13 - REVISION FOR LRFD PILE DESIGN.



4'-0" x 14'-0" x 30'-0" FOR 26A & 27A



4'-0" x 14'-0" x 32'-0" FOR 26B, 27B & 28A



4'-0" x 14'-0" x 34'-0" FOR 28B, 29A & 30A

NOTE:
SEE SHEET RS40-148-10 FOR FOOTING NOTES.

05-13 LATEST REVISION DATE	<i>Thomas E. McQuinn</i> APPROVED BY BRIDGE ENGINEER	
		STANDARD DESIGN - 40' ROADWAY, 3 SPAN BRIDGES ROLLED STEEL BEAM BRIDGES JUNE, 2010
TEE PIER-HPI0x57 SRL-1 STEEL PILE FOOTINGS <small>30° SKEW - SHEET 3</small>		RS40-150-10