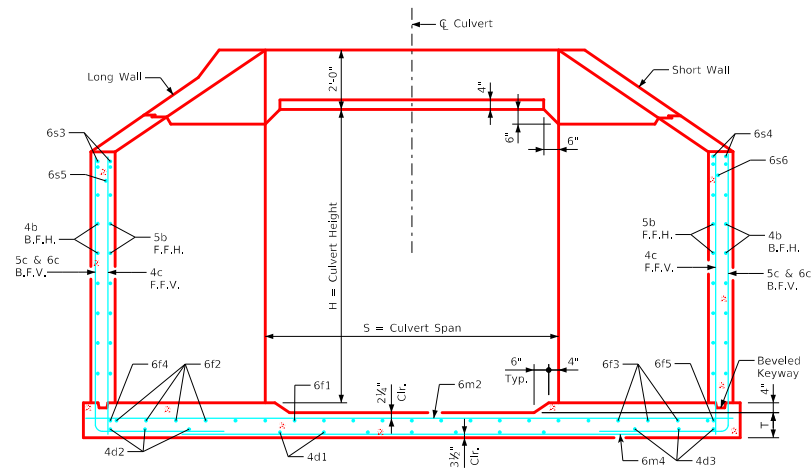
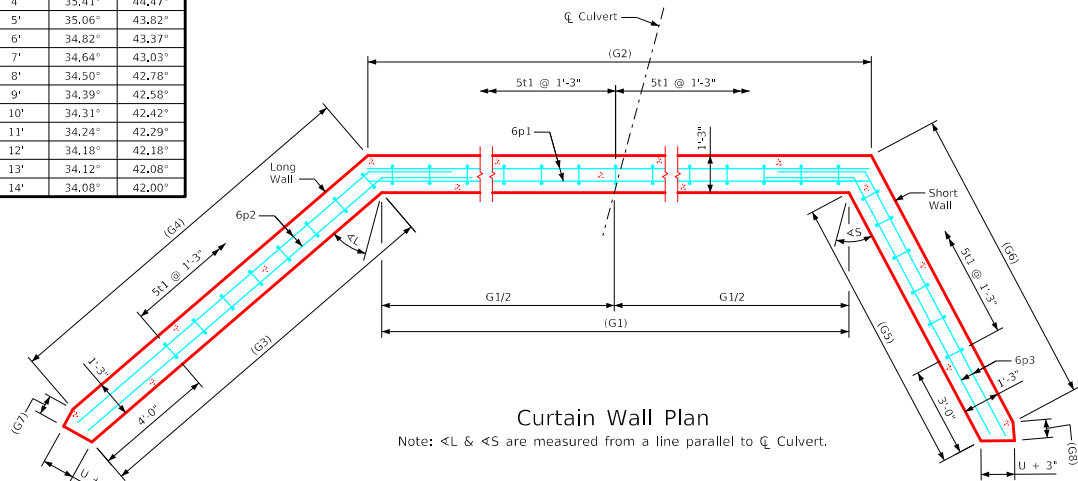


ENGLISHRFDISIGNEDSINGLECULVERTSFWH.DGN - FWH 15-4-21 - THIS SHEET ISSUED 02-2021.



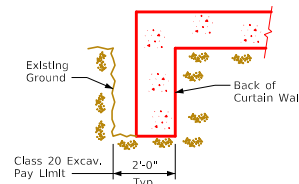
Typical Section - Near Center of Apron

| Culvert Height (H) | Angle  |        |
|--------------------|--------|--------|
|                    | <L     | <S     |
| 3'                 | 35.96° | 45.50° |
| 4'                 | 35.41° | 44.47° |
| 5'                 | 35.06° | 43.82° |
| 6'                 | 34.82° | 43.37° |
| 7'                 | 34.64° | 43.03° |
| 8'                 | 34.50° | 42.78° |
| 9'                 | 34.39° | 42.58° |
| 10'                | 34.31° | 42.42° |
| 11'                | 34.24° | 42.29° |
| 12'                | 34.18° | 42.18° |
| 13'                | 34.12° | 42.08° |
| 14'                | 34.08° | 42.00° |

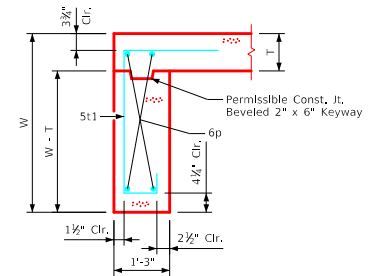


Curtain Wall Plan

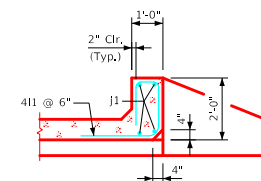
Note: <L & <S are measured from a line parallel to C Culvert.



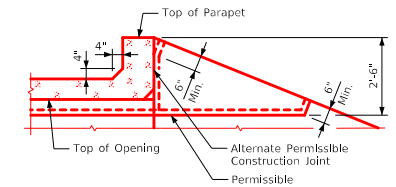
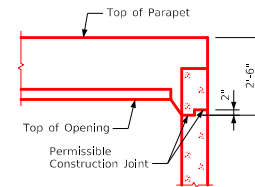
Curtain Wall  
Class 20 Excavation



Section thru Curtain Wall



Section thru Parapet



Top of Wingwall Details

Notes:

1. See Sheet FWH G2-21 for General Notes, Specifications, and Design Stresses.
2. See Sheet FWH 15-2-21 for dimensions table.

|                      |                             |   |             |
|----------------------|-----------------------------|---|-------------|
| LATEST REVISION DATE | APPROVED BY BRIDGE ENGINEER | <b>IOWADOT</b> Highway Division                           |             |
|                      |                             | Standard Design - Single Reinforced Concrete Box Culverts |             |
|                      |                             | Flared Wing Headwalls                                     |             |
|                      |                             | February, 2021  |             |
|                      |                             | Parapet & Curtain Wall Details                            | FWH 15-4-21 |
|                      |                             | 15° Skew  |             |