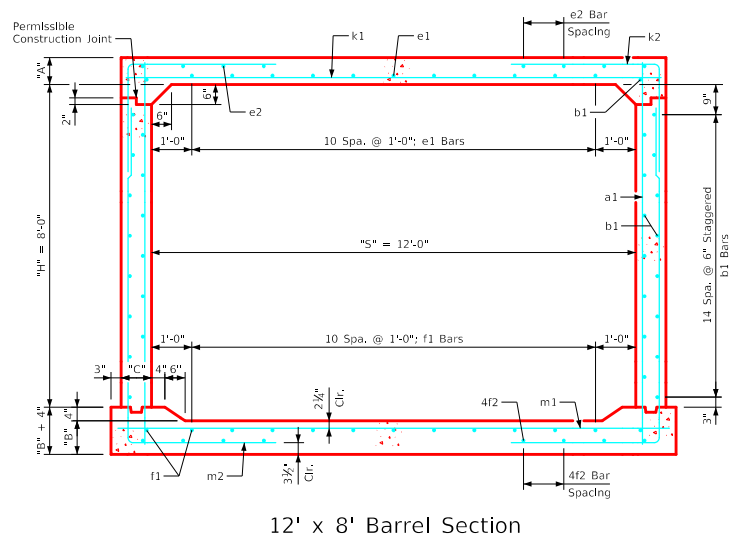
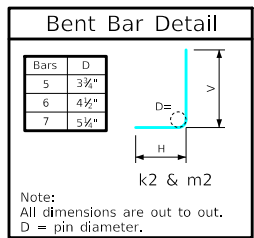


Variable Dimensions and Quantities for 12' x 8' Barrel Sections

Dimensions										Bar List																		Quantities																					
Fill	S	H	A	B	C	D	a1		b1		e1		e2		f1		f2		k1		k2		k9		m1		m2		m9		Concrete (CY/FT)				Steel (LB/FT)														
0	1	2	3-6	7-9	10	11-15	16-20	21-25	26-30	31-35	36-40	41-45	46-50	51-55	Size	Sp.	L	Size	Sp.	No.	Size	Sp.	No.	Size	Sp.	No.	Size	Sp.	No.	Size	Sp.	L	Size	Sp.	L	Size	Sp.	L	Slab	Floor	Walls	Total							
0	12	8	13.5	13.5	9	9	4	12	10'-2	4	6	32	5	12	11	4	15	10	4	12	13	4	15	8	7	9	13'-2	6	12	9'-6	5'-7	3'-11	6	13'-2	7	9	13'-8	7	12	13'-0	4'-5	8'-7	7	13'-8	0.595	0.620	0.424	1.639	234.18
1	12	8	12.5	13	9	9	4	12	10'-0	4	6	32	5	12	11	4	15	10	4	12	13	4	15	8	7	9	13'-2	5	6	9'-3	5'-9	3'-6	5	13'-2	7	9	13'-8	5	6	12'-11	4'-5	8'-6	5	13'-8	0.553	0.598	0.424	1.575	238.47
2	12	8	8.5	10.5	9	6	4	6	9'-6	4	6	32	6	12	11	4	14	8	4	12	13	4	13	8	7	6	13'-2	5	6	7'-2	4'-1	3'-1	5	13'-2	7	6	13'-8	5	6	12'-3	3'-11	8'-4	5	13'-8	0.387	0.490	0.424	1.301	276.82
3-6	12	8	8.5	10.5	9	9	5	12	9'-6	4	6	32	4	12	11	4	12	8	4	12	13	4	12	8	8	9	13'-2	5	6	6'-9	3'-8	3'-1	5	13'-2	7	6	13'-8	5	6	12'-0	3'-8	8'-4	5	13'-8	0.387	0.490	0.424	1.301	254.34
7-9	12	8	8.5	11	9	6	4	6	9'-6	4	6	32	4	12	11	4	18	6	4	12	13	4	16	6	7	6	13'-2	6	6	7'-2	3'-7	3'-7	6	13'-2	7	6	13'-8	5	6	11'-7	3'-3	8'-4	5	13'-8	0.387	0.512	0.424	1.323	275.97
10	12	8	9	12	9	6	4	6	9'-8	4	6	32	4	12	11	4	15	6	4	12	13	4	14	6	7	6	13'-2	5	6	6'-4	3'-2	3'-2	5	13'-2	7	6	13'-8	5	6	11'-5	3'-0	8'-5	5	13'-8	0.407	0.555	0.424	1.386	258.50
11-15	12	8	10.5	13	9	9	4	12	9'-10	4	6	32	4	12	11	4	15	6	4	12	13	4	14	6	8	6	13'-2	7	9	7'-2	3'-1	4'-1	7	13'-2	8	6	13'-8	7	9	11'-6	3'-0	8'-6	7	13'-8	0.470	0.598	0.424	1.492	313.03
16-20	12	8	12.5	15	9	6	4	6	10'-2	4	6	32	4	12	11	4	12	6	4	12	13	4	13	6	8	6	13'-2	5	6	6'-2	2'-8	3'-6	5	13'-2	8	6	13'-8	5	6	11'-5	2'-9	8'-8	5	13'-8	0.553	0.685	0.424	1.662	293.18
21-25	12	8	14.5	17	9.5	9	4	12	10'-6	4	6	32	4	12	11	4	12	6	4	12	13	4	12	6	9	6	13'-2	7	9	7'-2	2'-9	4'-5	7	13'-2	9	6	13'-9	7	9	11'-7	2'-9	8'-10	7	13'-9	0.642	0.777	0.447	1.866	355.26
26-30	12	8	16.5	19	10.5	9	6	9	10'-10	4	6	32	4	12	11	4	14	6	4	12	13	4	13	6	9	6	13'-5	6	9	7'-4	3'-1	4'-3	6	13'-5	9	6	13'-11	6	9	12'-0	3'-0	9'-0	6	13'-11	0.736	0.874	0.496	2.106	360.18
31-35	12	8	18	20.5	12	9	4	9	11'-1	4	6	32	4	12	11	4	16	6	4	12	13	4	14	6	9	6	13'-8	7	9	8'-3	3'-7	4'-8	7	13'-8	9	6	14'-2	7	9	12'-4	3'-2	9'-2	7	14'-2	0.818	0.959	0.566	2.343	377.00
36-40	12	8	19.5	22	12.5	9	6	9	11'-4	4	6	32	4	12	11	4	14	6	5	12	13	4	14	6	9	6	13'-9	5	6	7'-4	3'-3	4'-1	5	13'-9	9	6	14'-3	5	6	12'-7	3'-4	9'-3	5	14'-3	0.889	1.032	0.589	2.510	374.21
41-45	12	8	21	23.5	13	9	5	12	11'-7	4	6	32	4	12	11	4	16	6	5	12	13	4	15	6	9	6	13'-10	7	9	8'-7	3'-8	4'-11	7	13'-10	9	6	14'-4	7	9	12'-10	3'-5	9'-5	7	14'-4	0.961	1.107	0.613	2.681	393.89
46-50	12	8	22.5	25	14	9	6	9	11'-10	4	6	32	5	12	11	4	15	6	5	12	13	4	16	6	10	6	14'-0	5	6	7'-11	3'-7	4'-4	5	14'-0	10	6	14'-6	5	6	13'-2	3'-8	9'-6	5	14'-6	1.041	1.190	0.659	2.890	440.84
51-55	12	8	24	26.5	14.5	9	4	9	12'-1	4	6	32	5	12	11	4	15	6	5	12	13	4	16	6	10	6	14'-1	6	6	8'-6	3'-8	4'-10	6	14'-1	10	6	14'-7	6	6	13'-5	3'-9	9'-8	6	14'-7	1.114	1.266	0.683	3.063	461.21



- Notes:**
- Dimensions listed on this sheet to be used in conjunction with Sheet RCB G3-20.
 - The k2 and m2 bars horizontal legs may lap in low fill situations.
 - Fill dimensions "S" and "H" are in feet.
 - Dimensions "A", "B", "C", "D", and "Sp." listed in the bar list are in inches.
 - Dimensions "L", "H", "V" are in feet and inches.

LATEST REVISION DATE	 APPROVED BY BRIDGE ENGINEER	 Standard Design Single Reinforced Concrete Box Culverts July, 2020	
		Culvert Barrel Details 12' x 8' Barrel Sections	RCB 12-8-20

ENGLISHLRFDDESIGNEDSINGLECULVERTS.DGN - RCB 12-8-20 - THIS SHEET ISSUED 07-2020.