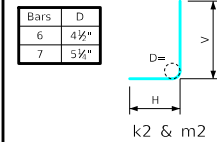


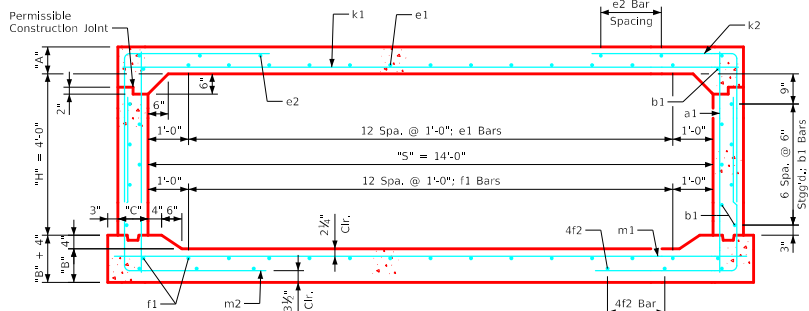
Variable Dimensions and Quantities for 14' x 4' Barrel Sections

Dimensions										Bar List																		Quantities																					
Fill	S	H	A	B	C	D	a1		b1			e1			e2			f1		f2		k1			k2			k9			m1		m2			m9			Concrete (CY/FT)				Steel (LB/FT)						
0	14	4	14	14	9	6	Size	Sp.	L	Size	Sp.	No.	Size	Sp.	No.	Size	Sp.	No.	Size	Sp.	No.	Size	Sp.	L	Size	Sp.	L	Size	Sp.	L	Size	Sp.	L	Size	Sp.	L	Slab	Floor	Walls	Total									
0	14	4	14	14	9	6	4	6	6'-3	4	6	16	5	12	13	4	16	6	4	12	15	4	14	8	7	9	15'-2	6	9	7'-3	3'-3	4'-0	6	15'-2	7	9	15'-8	6	9	8'-8	4'-1	4'-7	6	15'-8	0.702	0.728	0.202	1.632	216.97
1	14	4	13.5	13.5	9	6	4	6	6'-2	4	6	16	5	12	13	4	16	6	4	12	15	4	13	8	7	9	15'-2	6	9	7'-3	3'-4	3'-11	6	15'-2	7	9	15'-8	6	9	8'-5	3'-10	4'-7	6	15'-8	0.678	0.703	0.202	1.583	215.68
2	14	4	9	10.5	9	9	4	12	5'-6	4	6	16	6	12	13	4	13	8	4	12	15	4	15	8	7	6	15'-2	7	6	8'-0	4'-0	4'-0	7	15'-2	7	6	15'-8	6	6	8'-8	4'-4	4'-4	6	15'-8	0.463	0.555	0.202	1.220	307.61
3-5	14	4	8.5	10.5	9	9	4	12	5'-6	4	6	16	4	12	13	4	13	8	4	12	15	4	15	8	7	6	15'-2	7	6	7'-10	3'-11	3'-11	7	15'-2	7	6	15'-8	6	6	8'-8	4'-4	4'-4	6	15'-8	0.439	0.555	0.202	1.196	295.50
6-8	14	4	9	11	9	9	4	12	5'-7	4	6	16	4	12	13	4	13	8	4	12	15	4	12	8	7	6	15'-2	7	6	8'-0	4'-0	4'-0	7	15'-2	7	6	15'-8	7	6	8'-0	3'-8	4'-4	7	15'-8	0.463	0.580	0.202	1.245	310.92
9-10	14	4	10	12.5	9	9	4	12	5'-9	4	6	16	4	12	13	4	17	6	4	12	15	4	16	6	7	6	15'-2	7	6	7'-5	3'-5	4'-0	7	15'-2	8	6	15'-8	7	6	7'-9	3'-3	4'-6	7	15'-8	0.511	0.654	0.202	1.367	321.53
11-13	14	4	11.5	13.5	9	9	4	12	6'-0	4	6	16	4	12	13	4	14	6	4	12	15	4	14	6	8	6	15'-2	7	6	7'-2	3'-0	4'-2	7	15'-2	8	6	15'-8	7	6	7'-7	3'-0	4'-7	7	15'-8	0.583	0.703	0.202	1.488	337.63
14-16	14	4	12.5	14	9.5	9	4	12	6'-1	4	6	16	4	12	13	4	14	8	4	12	15	4	14	6	8	6	15'-3	7	6	8'-6	4'-3	4'-3	7	15'-3	8	6	15'-9	7	6	7'-8	3'-1	4'-7	7	15'-9	0.635	0.733	0.213	1.581	351.68

Bent Bar Detail



Note:
All dimensions are out to out.
D = pin diameter.



14' x 4' Barrel Section

Notes:

1. Dimensions listed on this sheet to be used in conjunction with Sheet RCB G3-20.
2. The k2 and m2 bars horizontal legs may lap in low fill situations.
3. Fill, dimensions "S" and "H" are in feet.
4. Dimensions "A", "B", "C", "D", and "Sp." listed in the bar list are in inches.
5. Dimensions "L", "H", "V" are in feet and inches.

LATEST REVISION DATE	APPROVED BY BRIDGE ENGINEER	IOWADOT Highway Division	
		Standard Design Single Reinforced Concrete Box Culverts July, 2020	
		Culvert Barrel Details 14' x 4' Barrel Sections	RCB 14-4-20

ENGLISHLRFD\SIGNED\SINGLE\CULVERTS.DGN - RCB 14-4-20 - THIS SHEET ISSUED 07-2020.