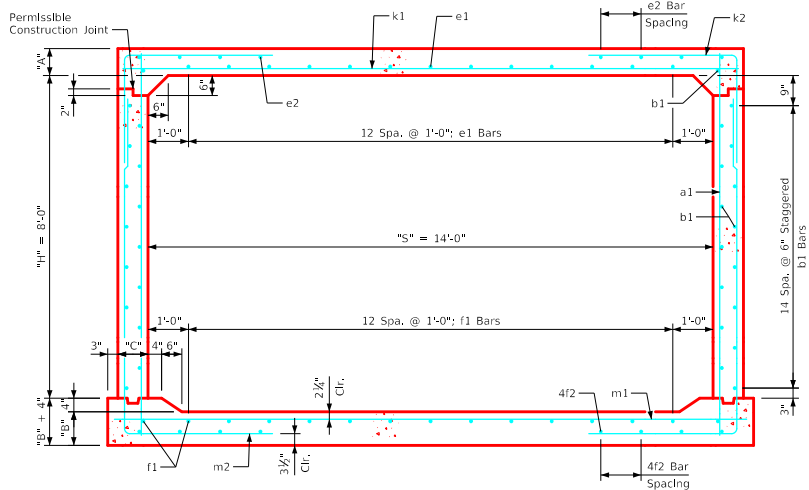
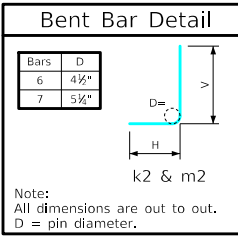


Variable Dimensions and Quantities for 14' x 8' Barrel Sections

Dimensions											Bar List																		Quantities																				
Fill	S	H	A	B	C	D	a1		b1			e1			e2			f1		f2		k2				k9		m1		m2				m9				Concrete (CY/FT)				Steel (LB/FT)							
0	1	2	3-5	6-8	9-10	11-13	14-16	Size	Sp.	L	Size	Sp.	No.	Size	Sp.	No.	Size	Sp.	No.	Size	Sp.	No.	Size	Sp.	L	Size	Sp.	L	Size	Sp.	L	Size	Sp.	L	Size	Sp.	L	Slab	Floor	Walls	Total								
0	14	8	14	14	9	9	4	9	10'-3"	4	6	32	5	12	13	4	16	8	4	12	15	4	14	8	6	6	15'-2"	6	9	8'-7"	4'-7"	4'-0"	6	15'-2"	7	9	15'-8"	6	9	12'-9"	4'-2"	8'-7"	6	15'-8"	0.702	0.728	0.424	1.854	256.16
1	14	8	13.5	14	9	9	4	9	10'-2"	4	6	32	5	12	13	4	16	8	4	12	15	4	15	8	6	6	15'-2"	6	9	8'-9"	4'-9"	4'-0"	6	15'-2"	7	9	15'-8"	6	9	12'-11"	4'-4"	8'-7"	6	15'-8"	0.678	0.728	0.424	1.830	257.39
2	14	8	9	10.5	9	9	4	12	9'-6"	4	6	32	6	12	13	4	14	8	4	12	15	4	14	8	9	9	15'-2"	7	9	8'-2"	4'-1"	4'-1"	7	15'-2"	7	6	15'-8"	7	9	12'-5"	4'-1"	8'-4"	7	15'-8"	0.463	0.555	0.424	1.442	331.53
3-5	14	8	8.5	11	9	9	4	12	9'-6"	4	6	32	4	12	13	4	13	8	4	12	15	4	13	8	7	6	15'-2"	6	6	8'-0"	4'-0"	4'-0"	6	15'-2"	7	6	15'-8"	6	6	12'-4"	4'-0"	8'-4"	6	15'-8"	0.439	0.580	0.424	1.443	317.24
6-8	14	8	10	12.5	9	9	4	12	9'-9"	4	6	32	4	12	13	4	13	8	4	12	15	4	17	6	7	6	15'-2"	7	9	8'-0"	4'-0"	4'-0"	7	15'-2"	8	6	15'-8"	7	9	12'-0"	3'-6"	8'-6"	7	15'-8"	0.511	0.654	0.424	1.589	327.26
9-10	14	8	10	12.5	9	9	4	12	9'-9"	4	6	32	4	12	13	4	12	8	4	12	15	4	16	6	8	6	15'-2"	6	6	7'-4"	3'-8"	3'-8"	6	15'-2"	8	6	15'-8"	6	6	11'-9"	3'-3"	8'-6"	6	15'-8"	0.511	0.654	0.424	1.589	347.76
11-13	14	8	11.5	14.5	9	9	4	12	10'-1"	4	6	32	4	12	13	4	15	6	4	12	15	4	14	6	8	6	15'-2"	6	6	6'-10"	3'-1"	3'-9"	6	15'-2"	9	6	15'-8"	6	6	11'-7"	2'-11"	8'-8"	6	15'-8"	0.583	0.753	0.424	1.760	366.03
14-16	14	8	12.5	15	9	9	4	12	10'-2"	4	6	32	4	12	13	4	13	6	4	12	15	4	13	6	9	6	15'-2"	7	9	7'-1"	2'-10"	4'-3"	7	15'-2"	9	6	15'-8"	7	9	11'-6"	2'-10"	8'-8"	7	15'-8"	0.630	0.777	0.424	1.831	383.34



14' x 8' Barrel Section

- Notes:**
- Dimensions listed on this sheet to be used in conjunction with Sheet RCB G3-20.
 - The k2 and m2 bars horizontal legs may lap in low fill situations.
 - Fill, dimensions "S" and "H" are in feet.
 - Dimensions "A", "B", "C", "D", and "Sp." listed in the bar list are in inches.
 - Dimensions "L", "H", "V" are in feet and inches.

LATEST REVISION DATE	 APPROVED BY BRIDGE ENGINEER	 Standard Design Single Reinforced Concrete Box Culverts July, 2020
Culvert Barrel Details 14' x 8' Barrel Sections		RCB 14-8-20

ENGLISH\RFDSIGNEDSINGCULVERTS.DGN - RCB 14-8-20 - THIS SHEET ISSUED 07-2020.