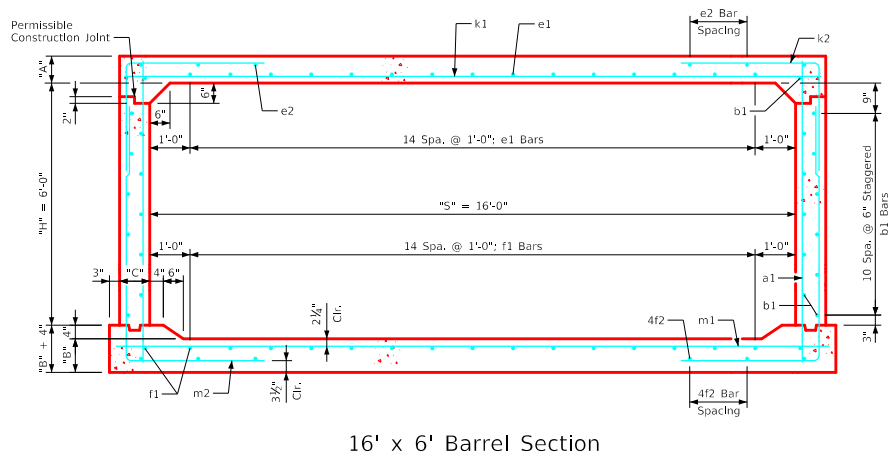
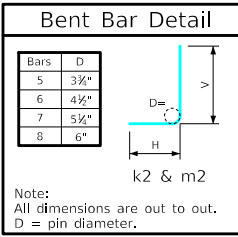


Variable Dimensions and Quantities for 16' x 6' Barrel Sections

Dimensions						Bar List																								Quantities																			
						a1		b1		e1		e2		f1		f2		k1		k2		k9		m1		m2		m9		Concrete (CY/FT)				Steel (LB/FT)															
Fill	S	H	A	B	C	D	Size	Sp.	L	Size	Sp.	No.	Size	Sp.	No.	Size	Sp.	No.	Size	Sp.	No.	Size	Sp.	L	Size	Sp.	L	Size	Sp.	L	Size	Sp.	L	Size	Sp.	L	Slab	Floor	Walls	Total	(LB/FT)								
0	16	6	14.5	15	9	6	4	6	8'-4	4	6	24	5	12	15	8	12	8	4	12	17	4	14	8	8	9	17'-2	5	6	7'-4	3'-8	3'-8	5	17'-2	6	6	17'-8	5	6	10'-11	4'-3	6'-8	5	17'-8	0.816	0.870	0.313	1.999	288.13
1	16	6	14.5	14.5	9	6	4	6	8'-3	4	6	24	5	12	15	4	18	6	4	12	17	4	14	8	8	9	17'-2	5	6	7'-2	3'-7	3'-7	5	17'-2	6	6	17'-8	5	6	10'-11	4'-3	6'-8	5	17'-8	0.789	0.842	0.313	1.944	270.00
2	16	6	9.5	11	9	9	4	12	7'-7	4	6	24	6	12	15	4	15	8	4	12	17	4	15	8	9	17'-2	8	9	8'-10	4'-5	4'-5	8	17'-2	7	6	17'-8	8	9	10'-10	4'-6	6'-4	8	17'-8	0.546	0.648	0.313	1.507	376.42	
3-5	16	6	10	12	9	9	4	12	7'-9	4	6	24	4	12	15	4	14	8	4	12	17	4	14	8	7	6	17'-2	7	6	8'-6	4'-3	4'-3	7	17'-2	7	6	17'-8	6	6	10'-7	4'-2	6'-5	6	17'-8	0.573	0.703	0.313	1.589	340.66
6-8	16	6	10	12.5	9	9	4	12	7'-9	4	6	24	4	12	15	4	13	8	4	12	17	4	12	8	8	6	17'-2	7	6	8'-0	4'-0	4'-0	7	17'-2	8	6	17'-8	7	6	10'-3	3'-9	6'-6	7	17'-8	0.573	0.731	0.313	1.617	401.63
9-10	16	6	11	13.5	9.5	9	4	12	7'-11	4	6	24	4	12	15	4	13	8	4	12	17	4	17	6	8	6	17'-3	7	6	8'-2	4'-1	4'-1	7	17'-3	8	6	17'-9	7	6	10'-1	3'-6	6'-7	7	17'-9	0.631	0.791	0.330	1.752	401.50
11-13	16	6	13	14.5	10	9	4	12	8'-2	4	6	24	4	12	15	4	15	6	4	12	17	4	16	6	9	6	17'-4	7	6	7'-5	3'-2	4'-3	7	17'-4	9	6	17'-10	7	6	10'-1	3'-5	6'-8	7	17'-10	0.744	0.852	0.347	1.943	447.29
14-16	16	6	14.5	17	11	9	4	12	8'-6	4	6	24	4	12	15	4	15	6	4	12	17	4	14	6	9	6	17'-6	8	9	8'-1	3'-3	4'-10	8	17'-6	9	6	18'-0	8	9	10'-0	3'-2	6'-10	8	18'-0	0.836	1.001	0.383	2.220	440.92



- Notes:**
- Dimensions listed on this sheet to be used in conjunction with Sheet RCB G3-20.
 - The k2 and m2 bars horizontal legs may lap in low fill situations.
 - Fill dimensions "S" and "H" are in feet.
 - Dimensions "A", "B", "C", "D", and "Sp." listed in the bar list are in inches.
 - Dimensions "L", "H", "V" are in feet and inches.

LATEST REVISION DATE	APPROVED BY BRIDGE ENGINEER 	IOWADOT Highway Division	
		Standard Design Single Reinforced Concrete Box Culverts July, 2020	
		Culvert Barrel Details 16' x 6' Barrel Sections	RCB 16-6-20

ENGLISHLRFD\DESIGNED\CULVERTS.DGN - RCB 16-6-20 - THIS SHEET ISSUED 07-2020.