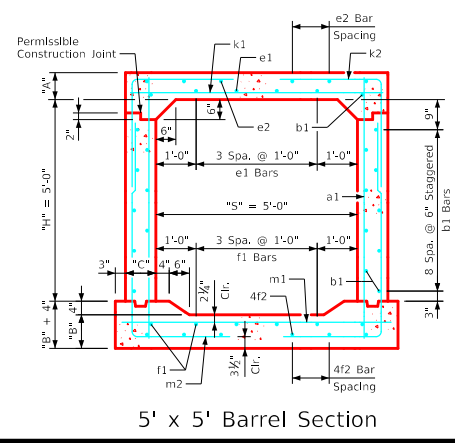
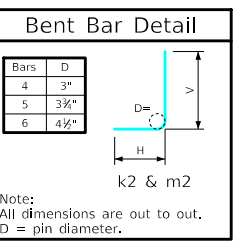


### Variable Dimensions and Quantities for 5' x 5' Barrel Sections

Dimensions								Bar List																								Quantities																	
Fill	S	H	A	B	C	D	a1		b1		e1		e2		f1		f2		k1				k2				k9		m1		m2				m9				Concrete (CY/FT)				Steel (LB/FT)						
							Size	Sp.	Size	Sp.	Size	Sp.	Size	Sp.	Size	Sp.	Size	Sp.	Size	Sp.	Size	Sp.	Size	Sp.	Size	Sp.	Size	Sp.	Size	Sp.	Size	Sp.	Size	Sp.	Size	Sp.	Size	Sp.	Size	Sp.	Slab	Floor	Walls	Total					
0	5	5	10	10	9	9	4	9	6'-7"	4	6	20	4	12	4	4	11	6	4	12	6	4	11	6	4	6	6'-2"	5	12	7'-4"	4'-1"	3'-3"	-	-	4	6	6'-8"	5	12	8'-10"	3'-7"	5'-3"	-	-	0.233	0.253	0.257	0.743	94.00
1	5	5	8	10	9	9	4	9	6'-5"	4	6	20	4	12	4	4	11	6	4	12	6	4	11	6	4	6	6'-2"	5	12	7'-2"	4'-1"	3'-1"	-	-	4	6	6'-8"	5	12	8'-4"	4'-1"	5'-3"	-	-	0.193	0.253	0.257	0.703	93.82
2	5	5	8	10	9	9	4	9	6'-5"	4	6	20	4	12	4	4	11	6	4	12	6	4	11	6	4	6	6'-2"	5	12	7'-2"	4'-1"	3'-1"	-	-	4	6	6'-8"	5	12	8'-4"	3'-1"	5'-3"	-	-	0.193	0.253	0.257	0.703	91.58
3-4	5	5	8	10	9	9	4	9	6'-5"	4	6	20	4	12	4	4	11	6	4	12	6	4	13	6	4	9	6'-2"	5	12	6'-2"	3'-1"	3'-1"	5	6'-2"	4	6	6'-8"	5	12	8'-0"	2'-9"	5'-3"	5	6'-8"	0.193	0.253	0.257	0.703	86.32
5-8	5	5	8	10	9	9	4	9	6'-5"	4	6	20	4	12	4	4	11	6	4	12	6	4	11	6	4	9	6'-2"	5	12	5'-7"	2'-6"	3'-1"	5	6'-2"	4	6	6'-8"	5	12	7'-8"	2'-5"	5'-3"	5	6'-8"	0.193	0.253	0.257	0.703	84.63
9-10	5	5	8	10	9	9	4	9	6'-5"	4	6	20	4	12	4	4	10	6	4	12	6	4	18	4	4	9	6'-2"	5	12	5'-4"	2'-3"	3'-1"	5	6'-2"	4	6	6'-8"	5	12	7'-4"	2'-1"	5'-3"	5	6'-8"	0.193	0.253	0.257	0.703	81.97
11-15	5	5	8	10	9	9	4	9	6'-5"	4	6	20	4	12	4	4	10	6	4	12	6	4	18	4	4	6	6'-2"	5	12	5'-4"	2'-3"	3'-1"	5	6'-2"	4	6	6'-8"	5	12	7'-4"	2'-1"	5'-3"	5	6'-8"	0.193	0.253	0.257	0.703	84.58
16-20	5	5	8	10	9	9	4	9	6'-5"	4	6	20	4	12	4	4	10	6	4	12	6	4	18	4	4	6	6'-2"	5	12	5'-4"	2'-3"	3'-1"	5	6'-2"	6	9	6'-8"	5	12	7'-4"	2'-1"	5'-3"	5	6'-8"	0.193	0.253	0.257	0.703	89.53
21-25	5	5	8	10	9	9	4	12	6'-5"	4	6	20	4	12	4	4	17	4	4	12	6	4	16	4	6	9	6'-2"	4	6	4'-9"	2'-0"	2'-9"	4	6'-2"	5	6	6'-8"	4	6	7'-2"	1'-11"	5'-3"	4	6'-8"	0.193	0.253	0.257	0.703	93.68
26-30	5	5	8	10	9	9	4	12	6'-5"	4	6	20	4	12	4	4	17	4	4	12	6	4	16	4	5	6	6'-2"	4	6	4'-9"	2'-0"	2'-9"	4	6'-2"	7	9	6'-8"	4	6	7'-2"	1'-11"	5'-3"	4	6'-8"	0.193	0.253	0.257	0.703	98.71
31-35	5	5	8	10.5	9	9	4	9	6'-5"	4	6	20	4	12	4	4	17	4	4	12	6	4	16	4	7	9	6'-2"	4	6	4'-8"	2'-0"	2'-8"	4	6'-2"	6	6	6'-8"	4	6	7'-3"	1'-11"	5'-4"	4	6'-8"	0.193	0.263	0.257	0.713	107.26
36-40	5	5	8.5	11	9	9	4	9	6'-6"	4	6	20	4	12	4	4	17	4	4	12	6	4	16	4	6	6	6'-2"	4	6	4'-9"	2'-0"	2'-9"	4	6'-2"	6	6	6'-8"	4	6	7'-3"	1'-11"	5'-4"	4	6'-8"	0.203	0.274	0.257	0.734	108.84
41-45	5	5	9.5	11.5	9	9	5	12	6'-8"	4	6	20	4	12	4	4	16	4	4	12	6	4	17	4	6	6	6'-2"	4	6	4'-9"	1'-11"	2'-10"	4	6'-2"	6	6	6'-8"	4	6	7'-5"	2'-0"	5'-5"	4	6'-8"	0.223	0.285	0.257	0.765	111.89
46-50	5	5	10	12	9	9	5	12	6'-9"	4	6	20	4	12	4	4	17	4	4	12	6	4	17	4	6	6	6'-2"	4	6	4'-11"	2'-0"	2'-11"	4	6'-2"	6	6	6'-8"	4	6	7'-5"	2'-0"	5'-5"	4	6'-8"	0.233	0.296	0.257	0.786	112.53
51-55	5	5	10.5	12.5	9.5	9	5	12	6'-10"	4	6	20	4	12	4	4	11	6	4	12	6	4	11	6	6	6	6'-3"	6	12	6'-2"	2'-6"	3'-8"	6	6'-3"	6	6	6'-9"	6	12	8'-0"	2'-6"	5'-6"	6	6'-9"	0.247	0.311	0.271	0.829	128.97



- Notes:**
- Dimensions listed on this sheet to be used in conjunction with Sheet RCB G3-20.
  - The k2 and m2 bars horizontal legs may lap in low fill situations.
  - Fill dimensions "S" and "H" are in feet.
  - Dimensions "A", "B", "C", "D", and "Sp." listed in the bar list are in inches.
  - Dimensions "L", "H", "V" are in feet and inches.

LATEST REVISION DATE	 APPROVED BY BRIDGE ENGINEER	 Standard Design <b>Single Reinforced Concrete Box Culverts</b> July, 2020	
		Culvert Barrel Details 5' x 5' Barrel Sections	RCB 5-5-20

ENGLISHLRFDDESIGNEDSINGLECULVERTS.DGN - RCB 5-5-20 - THIS SHEET ISSUED 07-2020.