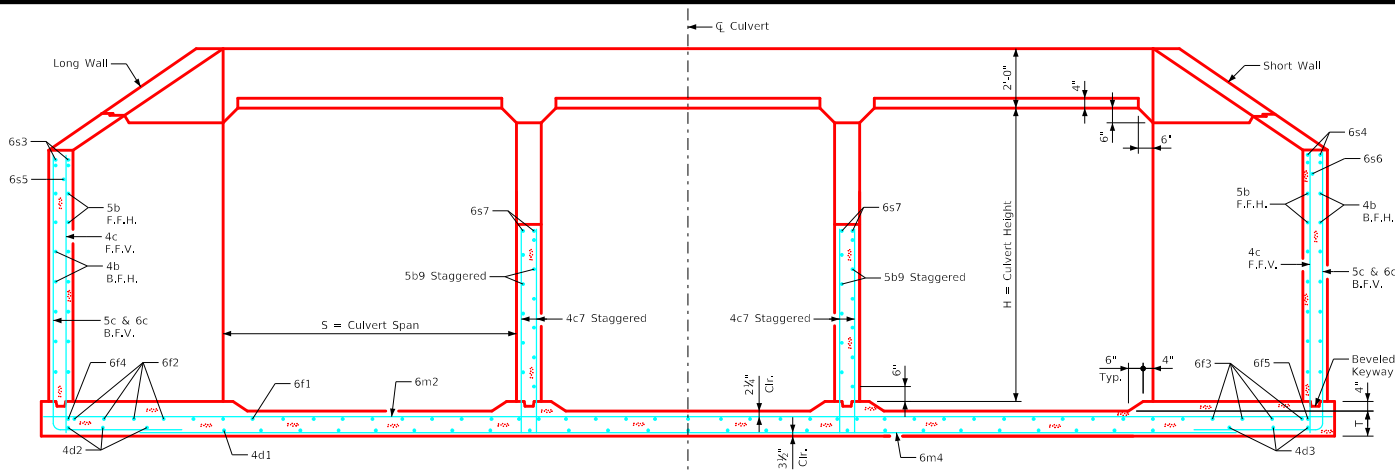
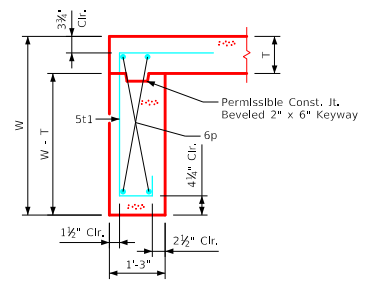


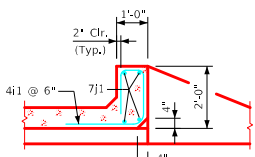
ENGLISH\DESIGNED\TRIPLECULVERTS\FWH.DGN - TRFWH 30-5-21 - THIS SHEET ISSUED 02-2021.



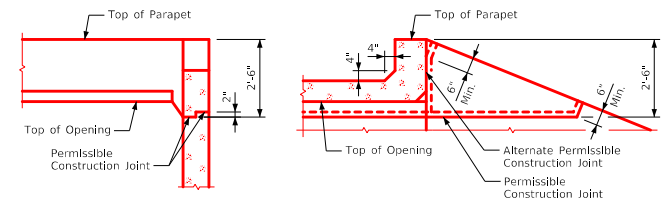
Typical Section - Near Center of Apron



Section thru Curtain Wall



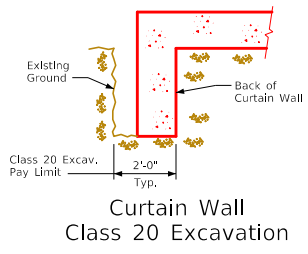
Section thru Parapet



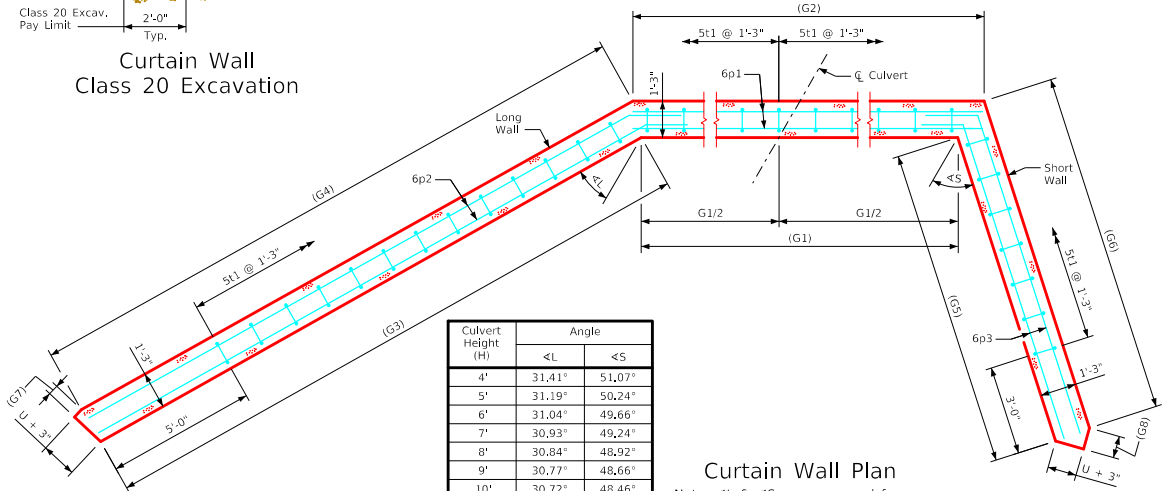
Top of Wingwall Details

Notes:

1. See Sheet TRFWH G1-21 for General Notes, Specifications, and Design Stresses.
2. For dimension table see Sheet TRFWH 30-2-21.



Curtain Wall Class 20 Excavation



Curtain Wall Plan

Note: <L & <S are measured from a line parallel to  $\bar{C}$  Culvert.

Culvert Height (H)	Angle	
	<L	<S
4'	31.41°	51.07°
5'	31.19°	50.24°
6'	31.04°	49.66°
7'	30.93°	49.24°
8'	30.84°	48.92°
9'	30.77°	48.66°
10'	30.72°	48.46°
11'	30.67°	48.29°
12'	30.63°	48.15°

LATEST REVISION DATE	APPROVED BY BRIDGE ENGINEER	<b>IOWADOT Highway Division</b>	
		Standard Design - Triple Reinforced Concrete Box Culverts	
		Flared Wing Headwalls	
		February, 2021	
		Parapet & Curtain Wall Details 30° Skew	TRFWH 30-5-21